



Airport Traffic Report

January 2007

European passenger traffic up 6.1% during January 2007

The '**ACI EUROPE Airport Traffic Report - January 2007**' includes **102 airports** in total.

The overall **passenger** traffic at European airports increased by **+6.1%** in **January 2007** compared with January 2006. The overall **freight** traffic among European airports increased **+2.0%** in January 2007 when compared with the corresponding month in 2006. The overall figure for **movements** at European airports increased **+4.8%** in January 2007 when compared with January 2006.

Passenger figures for January 2007 once again indicate that Group 4 airports (airports welcoming less than 5 million passengers per year) had the largest increase in traffic - with an average increase of **+12.4%** when compared with January 2006 - and an average increase of **+23.5%** when compared with January 2004.

Airports welcoming more than 25 million passengers per year (Group 1), airports welcoming between 10 and 25 million passengers (Group 2) and airports welcoming between 5 and 10 million passengers (Group 3) reported an average increase of **+5.1%**, **+6.7%** and **+2.8%** respectively when compared with January 2006. The same comparison of January 2007 with January 2005 demonstrates an average increase of **+8.8%**, **+12.3%** and **+7.1%** respectively.

Examples of airports that experienced the highest increase in passenger traffic per group, when comparing January 2007 with January 2006, include:

- **Group 1 airports** – Madrid (**+8.9%**), Barcelona (**+10.4%**) and Munich (**10.9%**);
- **Group 2 airports** – Moscow- Domodedovo (**+17.0%**), Milan-Malpensa (**+15.6%**) and Zurich (**+14.5%**);
- **Group 3 airports** – Marseille (**+13.3%**), Warsaw (**+13.1%**) and Venice (**+11.5%**);
- **Group 4 airports** – Katowice (**+38.2%**), Charleroi (**+37.7%**) and Moscow-Vnukovo (**+31.2%**).

Airports		Passengers		Commercial movements		Freight (metric tonnes)	
		January 2007	2007v 2006 variation %	January 2007	2007v 2006 variation %	January 2007	2007v 2006 variation %
1	London Heathrow (LHR)	5,038,700	-1.9%	39,136	-0.7%	95,644	-5.8%
2	Paris Roissy (CDG)	4,269,200	5.9%	43,617	4.1%	N/A	N/A
3	Frankfurt (FRA)	3,818,000	3.1%	36,707	1.1%	147,812	3.1%
4	Madrid (MAD)	3,496,700	12.0%	37,949	11.0%	25,353	1.5%
5	Amsterdam (AMS)	3,175,200	4.3%	32,687	7.9%	115,564	1.2%
6	Munich (MUC)	2,210,300	8.9%	28,985	2.2%	18,071	14.7%
7	London Gatwick (LGW)	2,206,500	5.0%	19,085	-0.8%	13,327	-20.4%
8	Rome-Fiumicino (FCO)	2,058,000	6.8%	25,075	8.2%	8,222	-5.0%
9	Barcelona (BCN)	2,018,500	10.4%	26,701	9.3%	7,844	18.2%
10	Paris Orly (ORY)	2,009,100	2.6%	19,360	2.9%	N/A	N/A
11	Milan-Malpensa (MXP)	1,698,300	13.9%	20,746	12.9%	31,968	26.6%
12	London Stansted (STN)	1,601,300	4.6%	15,225	6.2%	15,954	-13.8%
13	Dublin (DUB)	1,461,000	11.4%	14,703	11.3%	8,151	-13.8%
14	Copenhagen (CPH)	1,457,500	7.9%	20,169	5.1%	N/A	N/A
15	Zurich (ZRH)	1,418,700	11.6%	17,285	-2.5%	19,952	-2.7%
16	Manchester (MAN)	1,372,500	-1.7%	15,255	-3.6%	11,366	3.7%
17	Oslo (OSL)	1,263,400	9.5%	16,325	5.6%	5,666	7.0%
18	Stockholm-Arlanda (ARN)	1,260,300	0.3%	15,863	-7.1%	4,275	21.2%
19	Vienna (VIE)	1,148,100	6.0%	18,566	5.0%	13,694	2.2%
20	Moscow-Domodedovo (DME)	1,128,100	19.8%	12,409	22.8%	6,425	11.5%
21	Düsseldorf (DUS)	1,106,000	10.6%	15,663	9.8%	4,523	7.3%
22	Brussels (BRU)	1,036,800	2.4%	17,574	1.4%	51,204	-6.4%
23	Athens (ATH)	968,000	8.6%	13,361	9.2%	7,549	6.5%
24	Helsinki (HEL)	933,800	8.3%	14,379	6.2%	9,093	7.5%
25	Geneva (GVA)	927,900	5.2%	11,364	5.3%	2,132	-6.7%
26	Gran Canaria (LPA)	897,900	0.5%	9,315	-1.4%	3,202	-2.2%

Airports		Passengers		Commercial movements		Freight (metric tones)	
		January 2007	2007v 2006 variation %	January 2007	2007v 2006 variation %	January 2007	2007v 2006 variation %
27	Lisbon (LIS)	844,700	9.6%	10,918	7.2%	6,136	-3.1%
28	Berlin (TXL)	810,500	6.7%	10,727	3.9%	1,123	4.2%
29	Hamburg (HAM)	799,500	2.6%	N/A	N/A	2,466	37.2%
30	Palma de Mallorca (PMI)	779,600	-2.9%	9,361	0.3%	1,637	26.7%
31	Tenerife Sur (TFS)	767,800	-1.1%	5,667	1.4%	757	-8.1%
32	Prague (PRG)	710,000	10.8%	11,868	3.9%	3,445	-3.1%
33	Milan Linate (LIN)	698,400	4.7%	8,441	11.8%	1,498	19.7%
34	Malaga (AGP)	696,600	0.5%	7,810	0.0%	436	32.2%
35	Cologne/Bonn (CGN)	662,200	5.6%	10,249	-0.8%	57,193	10.4%
36	Stuttgart (STR)	622,600	-5.1%	9,251	-4.6%	1,510	-3.1%
37	Nice (NCE)	593,500	1.9%	8,454	1.3%	651	-28.0%
38	Birmingham (BHX)	576,700	2.1%	8,230	1.1%	848	-5.0%
39	Warsaw (WAW)	569,800	13.1%	10,256	6.5%	3,839	-18.5%
40	Edinburgh (EDI)	566,800	2.4%	9,103	0.8%	1,585	-44.1%
41	Glasgow (GLA)	544,300	3.3%	7,262	2.4%	313	-33.1%
42	Lyon (LYS)	526,200	5.2%	10,282	0.4%	2,822	-0.7%
43	Budapest (BUD)	506,000	0.1%	8,499	-5.2%	4,295	10.2%
44	Alicante (ALC)	478,600	0.4%	4,762	2.9%	349	-3.7%
45	Marseille (MRS)	460,900	13.3%	7,310	6.1%	3,253	-5.4%
46	Toulouse (TLS)	460,400	-1.1%	6,499	-2.9%	4,669	-5.0%
47	Venice (VCE)	413,800	11.5%	5,930	10.5%	1707	23.1%
48	Lanzarote (ACE)	408,400	-4.0%	3,948	8.9%	435	3.2%
49	Milan/Orio al Serio (BGY)	381,000	18.0%	4,284	17.3%	10,833	12.1%
50	Rome-Ciampino (CIA)	371,600	14.7%	3,538	13.7%	2,090	20.3%
51	Liverpool (LPL)	366,600	15.1%	3,655	-11.0%	302	-53.3%
52	Valencia (VLC)	353,100	19.1%	6,083	10.9%	999	2.3%
53	Moscow-Vnukovo (VKO)	348,500	31.2%	7,645	29.5%	1,112	18.2%

Airports		Passengers		Commercial movements		Freight (metric tonnes)	
		January 2007	2007v 2006 variation %	January 2007	2007v 2006 variation %	January 2007	2007v 2006 variation %
54	Fuerteventura (FUE)	336,800	8.2%	3,294	6.7%	232	-6.1%
55	Bergen (BGO)	321,800	11.8%	5,769	9.0%	269	13.7%
56	Hanover (HAJ)	315,800	0.0%	4,695	-1.5%	279	-24.4%
57	Naples (NAP)	315,600	23.0%	4,383	37.9%	132	-2.2%
58	Goteborg (GOT)	312,000	4.9%	4,854	4.1%	4,687	10.9%
59	Nuremberg (NUE)	301,700	-0.2%	4,960	3.2%	978	10.4%
60	Tenerife Norte (TFN)	296,500	1.8%	4,848	3.8%	1,842	9.7%
61	Nottingham East Midlands (EMA)	296,100	28.1%	4,669	17.0%	22,026	7.4%
62	Turin (TRN)	279,400	7.6%	4,016	12.2%	105	2.3%
63	Sevilla (SVQ)	276,100	12.9%	3,718	4.8%	593	32.4%
64	Hahn (HHN)	269,500	27.5%	2,895	-1.5%	5,852	-23.7%
65	Basel-Mulhouse (BSL/ML)	267,500	11.9%	4,265	1.2%	4,500	0.9%
66	Porto (OPO)	258,900	17.4%	4,023	11.3%	2,758	21.0%
67	Bilbao (BIO)	248,900	3.7%	3,990	-0.1%	283	6.0%
68	Aberdeen (ABZ)	243,500	12.6%	8,581	10.7%	328	-1.5%
69	Trondheim (TRD)	243,200	12.3%	3,722	3.1%	170	3.0%
70	Stavanger (SVG)	242,200	15.8%	4,085	9.0%	290	33.2%
71	Bordeaux (BOD)	228,500	2.0%	3,767	-6.8%	542	-28.5%
72	Girona (GRO)	225,600	4.0%	1,864	7.4%	23	506.3%
73	Riga (RIX)	192,200	19.8%	3,169	23.3%	435	19.8%
74	Faro (FAO)	179,700	14.0%	1,788	14.8%	70	37.6%
75	Charleroi (CRL)	172,900	37.7%	1,279	35.1%	N/A	N/A
76	Madeira (FNC)	170,000	-2.4%	1,798	-7.0%	512	-10.8%
77	Strasbourg (SXB)	147,600	-4.7%	3,205	-5.3%	49	25.6%
78	Malmo (MMX)	137,300	-3.7%	2,172	3.4%	3,308	63.8%
79	Stockholm-Bromma (BMA)	131,500	21.2%	2,680	20.4%	6	200.0%

Airports		Passengers		Commercial movements		Freight (metric tonnes)	
		January 2007	2007v 2006 variation %	January 2007	2007v 2006 variation %	January 2007	2007v 2006 variation %
80	Malta (MLA)	127,400	3.6%	1,533	-4.8%	1,138	-7.3%
81	Florence (FLR)	124,400	4.7%	1,974	-4.5%	5	-93.7%
82	Southampton (SOU)	122,700	12.2%	3,641	7.5%	19	90.0%
83	Tromsø (TOS)	115,200	10.1%	2,602	2.5%	185	-13.0%
84	Bodo (BOO)	105,600	11.2%	3,095	1.5%	130	16.6%
85	Vilnius (VNO)	99,300	10.8%	2,132	17.9%	326	6.9%
86	Katowice (KTW)	97,700	38.2%	1,412	32.8%	609	51.1%
87	Ibiza (IBZ)	93,800	12.9%	1,779	8.1%	233	3.7%
88	Ljubljana (LJU)	81,900	5.6%	2,456	22.3%	1,382	282.8%
89	Bournemouth (BOH)	68,100	12.6%	N/A	N/A	904	-26.4%
90	Menorca (MAH)	63,800	13.9%	1,338	10.5%	215	11.0%
91	Kristiansand (KRS)	59,300	15.2%	1,486	13.8%	47	6.1%
92	Aalesund (AES)	53,200	5.9%	802	5.8%	89	-14.7%
93	Skopje (SKP)	42,300	8.3%	805	-1.3%	113	7.9%
94	Haugesund (HAU)	39,600	28.9%	697	5.4%	49	135.0%
95	Humbly Grove (HUY)	24,200	-2.5%	955	14.4%	375	44.8%
96	Dubrovnik (DBV)	20,600	24.5%	293	17.2%	49	20.4%
97	Liege (LGG)	7,300	-26.6%	2,048	22.2%	37,694	17.2%
98	Ohrid (OHD)	3,300	-18.6%	59	-13.2%	0	-51.3%
99	Bologna (BLQ)	N/A	N/A	N/A	N/A	N/A	N/A
100	Glasgow Prestwick (PIK)	N/A	N/A	N/A	N/A	N/A	N/A
101	Olbia (OLB)	N/A	N/A	N/A	N/A	N/A	N/A
102	Bucharest (OTP)	N/A	N/A	N/A	N/A	N/A	N/A

----- Preliminary traffic figures -----

*Terminal passengers

**Freight & Mail

*** N/A due to privatisation of airport

Total commercial passengers

International passengers (enplaned + deplaned) + **domestic passengers** (enplaned + deplaned) + **direct transit passengers** (passengers who arrive at and depart from the airport on a flight bearing the same number. They are counted only ONCE).

Commercial movements

Landing or take off of an aircraft operating a scheduled or non scheduled commercial service.

Freight

Freight loaded and unloaded (arriving or departing) at the airport. Freight comprises goods, newspapers, diplomatic bags, parcel post and express parcel.

**The ten largest airports on freight – reporting to
ACI EUROPE**
(metric tonnes)

Airports		January 2007	2007v2006 variation %
1	Frankfurt (FRA)	147,812	3.1%
2	Amsterdam (AMS)	115,564	1.2%
3	London Heathrow (LHR)	95,644	-5.8%
4	Cologne/Bonn (CGN)	57,193	10.4%
5	Brussels (BRU)	51,204	-6.4%
6	Liege (LGG)	37,694	17.2%
7	Milan-Malpensa (MXP)	31,968	26.6%
8	Madrid (MAD)	25,353	1.5%
9	Nottingham East Midlands (EMA)	22,026	7.4%
10	Zurich (ZRH)	19,952	-2.7%

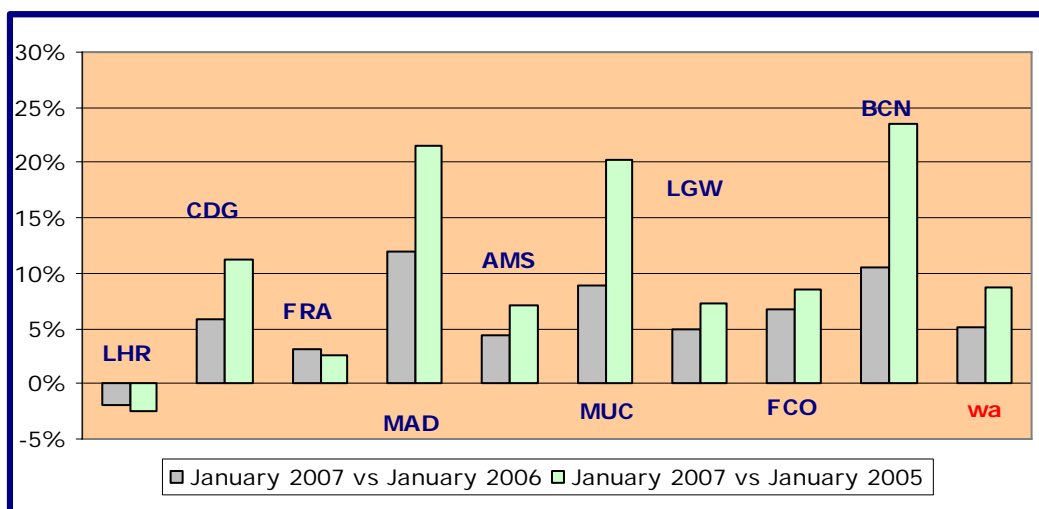
* Table only includes airports that send statistics regarding freight to ACI EUROPE

Group 1

**Airports welcoming more than 25 million passengers per year
(percentage traffic variation January 2007 versus 2006 and 2004)**

Airport	2007v2006 variation %	2007v2004 variation %
LHR	-1.9%	-2.5%
CDG	+5.9%	+11.3%
FRA	+3.1%	+2.5%
MAD	+12.0%	+21.6%
AMS	+4.3%	+7.1%
MUC	+8.9%	+20.2%
LGW	+5.0%	+7.2%
FCO	+6.8%	+8.6%
BCN	+10.4%	+23.6%
wa*	+5.1%	+8.8%

*weighted average=SUM(%change*pax)/SUM(pax)

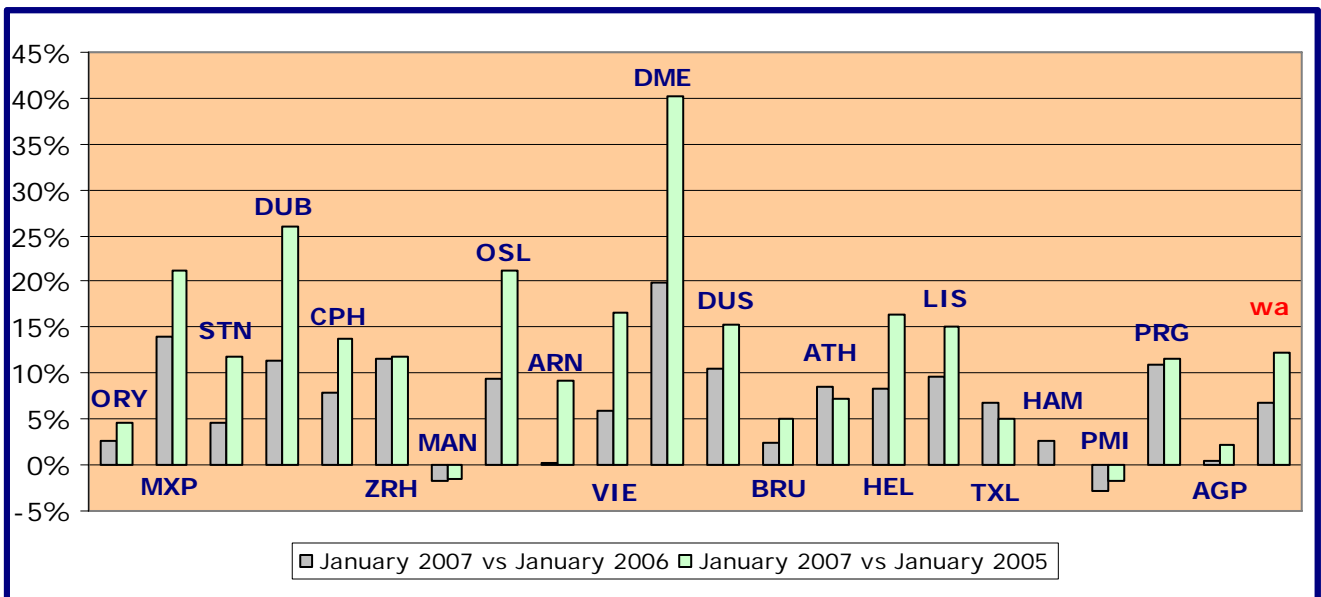


Group 2

Airports welcoming between 10 and 25 million passengers per year (percentage traffic variation January 2007 versus 2006 and 2004)

Airport	2007v2006 variation %	2007v2004 variation %
ORY	+2.6%	4.7%
MXP	+13.9%	21.3%
STN	+4.6%	11.7%
DUB	+11.4%	26.1%
CPH	+7.9%	13.8%
ZRH	+11.6%	11.8%
MAN	-1.7%	-1.5%
OSL	+9.5%	21.3%
ARN	+0.3%	9.3%
VIE	+6.0%	16.5%
DME	+19.8%	40.1%
DUS	+10.6%	15.4%
BRU	+2.4%	5.1%
ATH	+8.6%	7.3%
HEL	+8.3%	16.4%
LIS	+9.6%	15.1%
TXL	+6.7%	5.1%
HAM	+2.6%	N/A
PMI	-2.9%	-1.7%
PRG	+10.8%	11.5%
AGP	+0.5%	2.3%
wa*	+6.7%	+12.3%

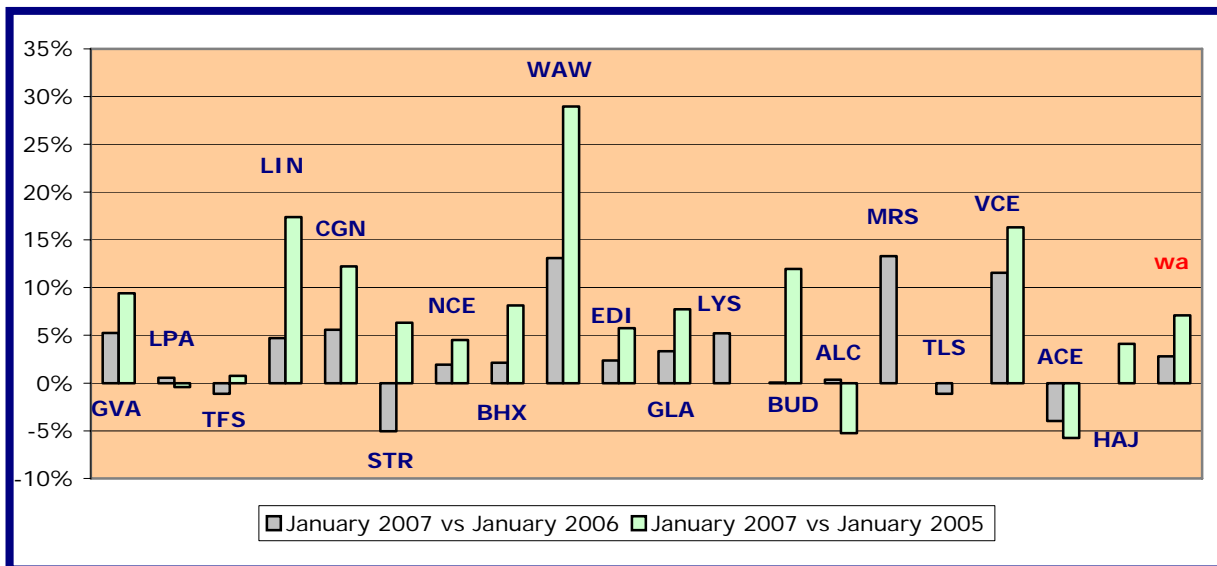
*weighted average=SUM(%change*pax)/SUM(pax)



Group 3
Airports welcoming between 5 and 10 million passengers
per year (percentage traffic variation January 2007 versus 2006 and 2004)

Airport	2007v2006 variation %	2007v2004 variation %
GVA	+5.2%	+9.4%
LPA	+0.5%	-0.4%
TFS	-1.1%	+0.8%
LIN	+4.7%	+17.4%
CGN	+5.6%	+12.2%
STR	-5.1%	+6.3%
NCE	+1.9%	+4.5%
BHX	+2.1%	+8.1%
WAW	+13.1%	+29.0%
EDI	+2.4%	+5.7%
GLA	+3.3%	+7.7%
LYS	+5.2%	N/A
BUD	+0.1%	+11.9%
ALC	+0.4%	-5.3%
MRS	+13.3%	N/A
TLS	-1.1%	N/A
VCE	+11.5%	+16.3%
ACE	-4.0%	-5.7%
HAJ	±0.0%	+4.1%
wa*	+2.8%	+7.1%

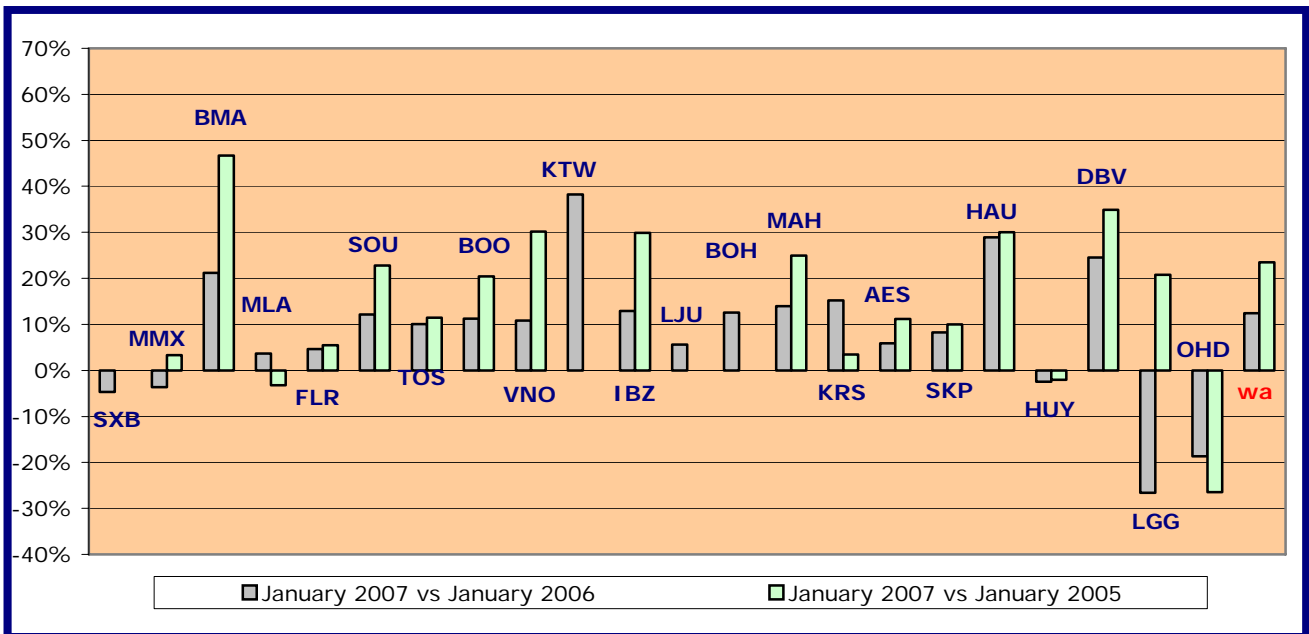
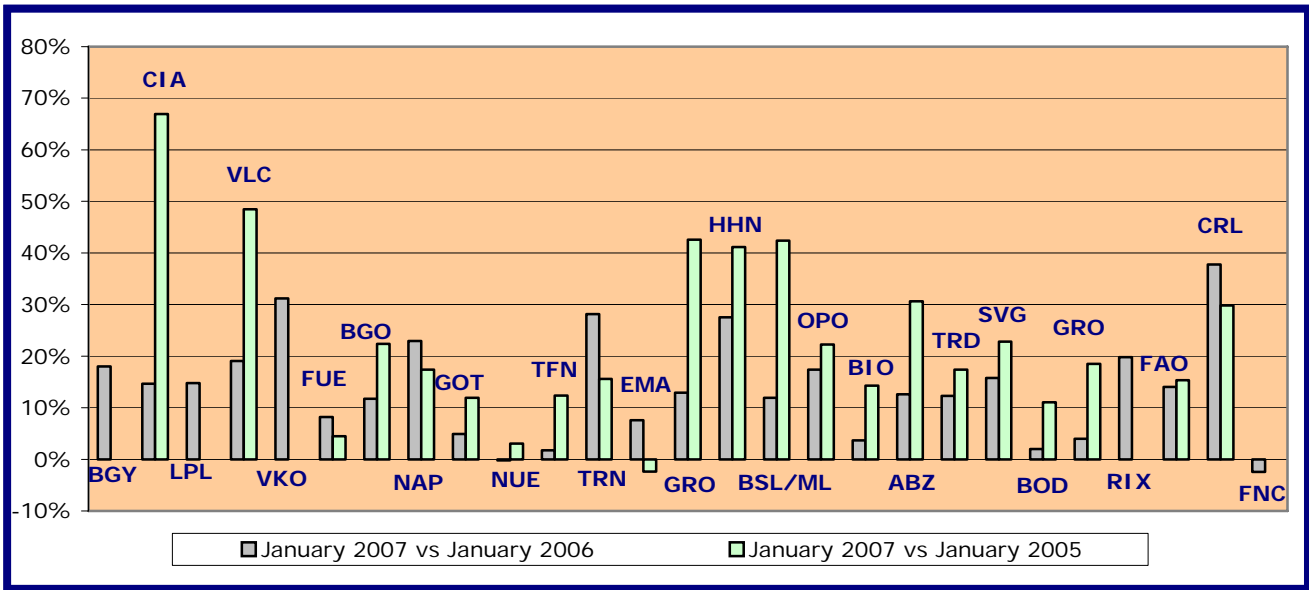
*weighted average=SUM(%change*pax)/SUM(pax)



Group 4
Airports welcoming less than 5 million passengers
per year (percentage traffic variation January 2007 versus 2006 and 2004)

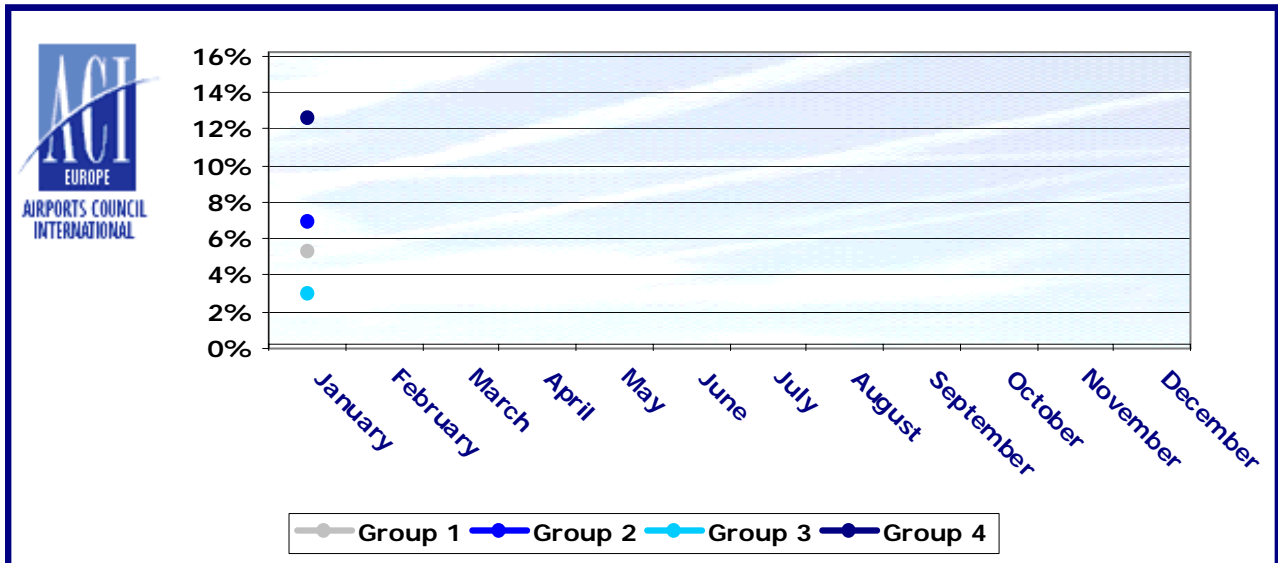
Airport	2007v2006 variation %	2007v2004 variation %
BGY	+18.0%	N/A
CIA	+14.7%	+67.0%
LPL	+14.8%	N/A
VLC	+19.1%	+48.5%
VKO	+31.2%	+93.6%
FUE	+8.2%	+4.5%
BGO	+11.8%	+22.4%
NAP	+23.0%	+17.4%
GOT	+4.9%	+11.9%
NUE	-0.2%	+3.0%
TFN	+1.8%	+12.4%
EMA	+28.1%	+15.6%
TRN	+7.6%	-2.4%
SVQ	+12.9%	+42.6%
HHN	+27.5%	+41.2%
BSL/ML	+11.9%	+42.4%
OPO	+17.4%	+22.3%
BIO	+3.7%	+14.3%
ABZ	+12.6%	+30.6%
TRD	+12.3%	+17.4%
SVG	+15.8%	+22.9%
BOD	+2.0%	+11.1%
GRO+	+4.0%	+18.5%
RIX	+19.8%	+89.9%
FAO	+14.0%	+15.3%
CRL	+37.7%	+29.8%
FNC	-2.4%	N/A
SXB	-4.7%	N/A
MMX	-3.7%	+3.4%
BMA	+21.2%	+46.7%
MLA	+3.6%	-3.2%
FLR	+4.7%	+5.5%
SOU	+12.2%	+22.8%
TOS	+10.1%	+11.4%
BOO	+11.2%	+20.4%
VNO	+10.8%	+30.2%
KTW	+38.2%	+73.7%
IBZ	+12.9%	+29.9%
LJU	+5.6%	N/A
BOH	+12.6%	+118.6%
MAH	+13.9%	+24.9%
KRS	+15.2%	+3.4%
AES	+5.9%	+11.2%
SKP	+8.3%	+10.0%
HAU	+28.9%	+30.0%
HUY	-2.5%	-2.0%
DBV	+24.5%	+34.9%
LGG	-26.6%	+20.8%
OHD	-18.6%	-26.4%
wa*	+12.4%	+23.5%

*weighted average=SUM(%change*pax)/SUM(pax)

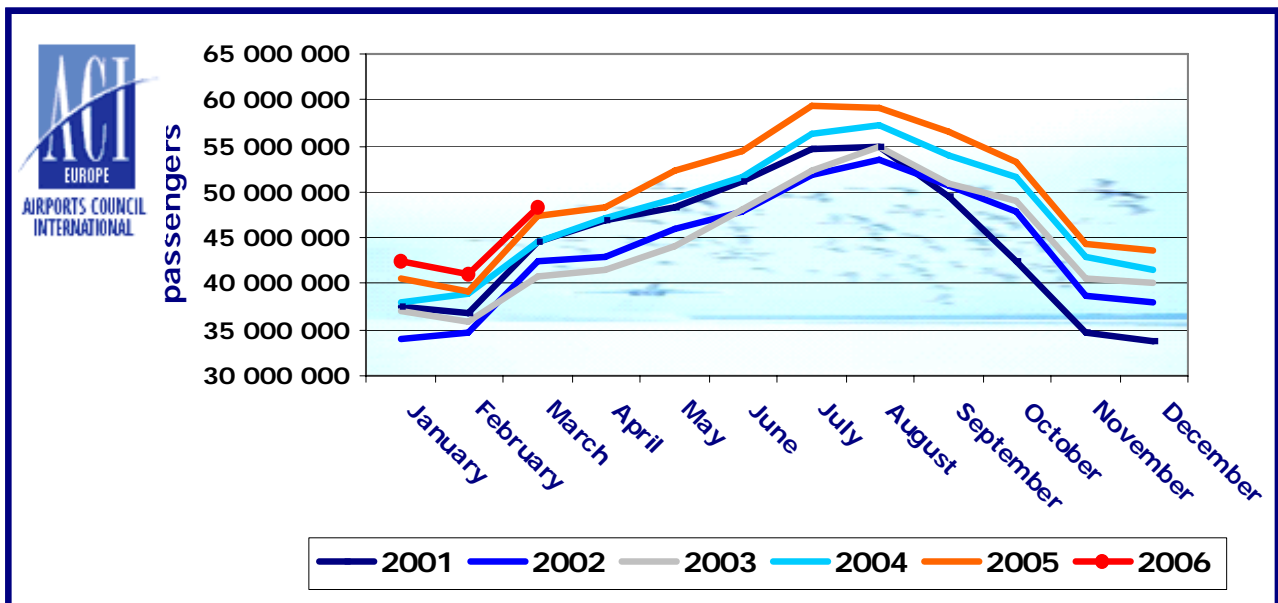


Year-to-date airport passenger trends

The graphic illustrates and compares the trends of the different airport Groups 1, 2, 3 and 4 for 2007.



The graphic compares the amount of total commercial passengers 2007 with 2006, 2005, 2004, 2003, 2002 and 2001. The airports included, in this graphic, are: **London Heathrow, Frankfurt, Paris Roissy, Amsterdam, London Gatwick, Madrid, Rome-Fiumicino, Barcelona, Manchester, Munich, Paris Orly, Milan-Malpensa, London Stansted, Zurich, Dublin, Copenhagen, Brussels, Stockholm-Arlanda, Vienna, Düsseldorf and Lisbon.**



* Please note that the graph will be updated as soon as all data is available