



Airport Traffic Report

August 2010

European passenger traffic up 5.3% during August 2010

The 'ACI EUROPE Airport Traffic Report - August 2010' includes **124 airports** in total.




The overall **passenger** traffic at European airports increased by **5.3%** in **August 2010** compared with August 2009. The overall **freight** traffic among European airports increased **19.6%** in August 2010 when compared with the corresponding month in 2009. The overall figure for **movements** at European airports increased **3.7%** in August 2010 when compared with August 2009.




The accumulated figure for **passenger** traffic **January to August 2010** increase by **3.6%** compared with the corresponding period 2009. The accumulated figure for **freight** traffic during **January to August** increased by **23.6%** and **movements** decreased by **-0.2%** during the corresponding period when compared with 2009.




Airports welcoming more than 25 million passengers per year (Group 1), airports welcoming between 10 and 25 million passengers (Group 2), airports welcoming between 5 and 10 million passengers (Group 3) and airports welcoming less than 5 million passengers per year (Group 4) reported an average increase/decrease of **3.4%**, **5.8%**, **6.9%** and **7.3%** respectively when compared with August 2009. The same comparison of August 2010 with August 2008 demonstrates an average increase/decrease of **-0.3%**, **-0.2%**, **-0.2%** and **2.4%** respectively.




Examples of airports that experienced the highest increase in passenger traffic per group, when comparing August 2010 with August 2009, include:

- **Group 1 airports** – Rome FCO (+**9.1%**), Munich (+**7.7%**), Frankfurt (+**6.6%**) and Barcelona (+**5.4%**)
- **Group 2 airports** – Moscow SVO (+**29.0%**), Vienna (+**13.0%**), Copenhagen (+**12.9%**) and Stockholm Arlanda (+**11.8%**)
- **Group 3 airports** – Istanbul SAW (+**71.1%**), Ankara (+**22.3%**), Moscow VKO (+**18.5%**) and Faro (+**10.5%**)
- **Group 4 airports** – Brindisi (+**51.0%**), Charleroi (+**35.9%**), Eindhoven (+**34.6%**), and Porto (+**24.1%**).

Airport	Passengers		Commercial movements		Freight		
		August 2010		August 2010		August 2010	
LONDON	LHR	6557115	2,6%	41016	3,5%	127199	14,3%
PARIS	CDG	5826459	1,9%	45262	0,5%	181420	20,6%
FRANKFURT	FRA	5220030	6,6%	40804	5,1%	182583	18,5%
MADRID	MAD	4827343	2,2%	37238	1,8%	27529	19,5%
AMSTERDAM	AMS	4648773	3,6%	36728	1,0%	130938	20,5%
ROME	FCO	3738001	9,1%	29360	6,1%	12126	25,8%
LONDON	LGW	3696377	-1,2%	24106	-3,7%	8789	40,2%
MUNICH	MUC	3268406	7,7%	32439	2,8%	22996	28,1%
ANTALYA	AYT	3252175	6,7%	20170	8,3%	647	-39,2%
PALMA DE MALLORCA	PMI	3204364	4,7%	22106	-0,6%	1552	1,7%
ISTANBUL	IST	3071073	0,2%	25272	0,5%	35543	10,7%
BARCELONA	BCN	3042603	5,4%	24385	0,5%	7173	9,0%
MOSCOW	DME	2502490	11,7%	21153	13,7%	12298	12,4%
PARIS	ORY	2417268	0,0%	18048	-0,2%	7910	-1,1%
ZURICH	ZRH	2225662	5,0%	20727	4,2%	22934	17,2%
MOSCOW	SVO	2128633	29,0%	17432	19,0%	10802	16,3%
MANCHESTER	MAN	2110515	-2,6%	15278	-3,7%	10630	14,1%
COPENHAGEN	CPH	2098882	12,9%	21545	9,1%	N/A	N/A
LONDON	STN	2090601	-6,1%	14250	-7,7%	16199	12,5%
MILAN	MXP	2045771	7,2%	17888	5,9%	29692	32,0%
DUBLIN	DUB	2010440	-4,3%	14916	-0,9%	7917	6,3%
VIENNA	VIE	1991481	13,0%	21924	4,7%	16358	10,4%
DUSSELDORF	DUS	1924772	11,5%	18291	3,8%	8008	28,8%
OSLO	OSL	1811141	10,7%	18774	3,1%	3605	-8,0%
BRUSSELS	BRU	1781922	2,4%	18529	1,2%	33773	10,4%
ATHENS	ATH	1712936	-10,6%	16968	-13,4%	6945	-6,1%
LISBON	LIS	1600739	7,1%	13727	5,8%	7480	8,3%
STOCKHOLM	ARN	1581802	11,8%	15645	4,6%	6982	57,2%
MALAGA	AGP	1500406	8,8%	11653	8,2%	274	-14,2%
BERLIN	TXL	1358611	10,8%	13305	10,0%	2212	53,6%
PRAGUE	PRG	1308083	-2,4%	14749	-5,1%	4452	52,8%
HAMBURG	HAM	1192490	9,5%	12038	6,7%	5950	10,7%
ISTANBUL	SAW	1180809	71,1%	9863	73,3%	2643	125,3%
HELSINKI	HEL	1167538	3,3%	14620	4,3%	12965	32,7%
ALICANTE	ALC	1113923	0,6%	7955	-0,1%	245	-6,1%
NICE	NCE	1097441	-3,4%	13264	0,6%	1211	48,8%
MOSCOW	VKO	1091578	18,5%	10937	16,2%	2994	21,1%
IBIZA	IBZ	1080030	10,8%	9591	8,7%	389	-1,9%
GENEVA	GVA	1056925	3,8%	10547	2,4%	3345	25,8%
COLOGNE	CGN	1040773	4,9%	11180	3,7%	53155	28,2%
STUTTGART	STR	1013286	7,8%	9669	2,5%	1636	13,3%
BIRMINGHAM	BHX	965784	-4,8%	8324	-4,2%	2262	96,7%
WARSAW	WAW	962869	9,9%	11531	6,5%	3484	32,5%
BUDAPEST	BUD	940422	2,3%	9870	-1,0%	4641	12,3%
EDINBURGH	EDI	927037	-0,2%	9851	1,2%	1435	-16,6%
MILAN	BGY	839183	6,3%	6317	6,9%	6801	9,0%
FARO	FAO	798396	10,5%	5425	11,7%	34	-18,2%
GRAN CANARIA	LPA	787346	4,5%	7844	0,6%	1912	-6,5%
MARSEILLE	MRS	786161	4,6%	8776	4,0%	3879	8,4%
LYON	LYS	764778	4,7%	9392	1,6%	2315	23,6%
CATANIA	CTA	745595	9,3%	6083	8,5%	659	78,1%
MILAN	LIN	743617	3,1%	7199	4,7%	1071	38,7%
BERLIN	SXF	716891	5,1%	5765	4,2%	381	20,8%
ANKARA	ESB	707687	22,3%	5826	22,8%	1676	84,2%
GLASGOW	GLA	648500	-9,3%	6520	-1,1%	303	-5,9%
TENERIFE	TFS	638254	3,0%	4016	-0,4%	306	-28,2%
NAPLES	NAP	633664	5,9%	5407	0,1%	49	-8,4%
PORTO	OPO	622169	24,1%	5516	11,0%	1996	10,9%
GIRONA	GRO	616428	0,1%	4052	0,8%	4	-68,7%
BOLOGNA	BLQ	604914	11,9%	6110	8,9%	1592	42,4%
EAST MIDLANDS	EMA	558069	2,9%	5936	3,7%	22650	28,0%
VALENCIA	VLC	549368	0,3%	5605	-4,2%	783	39,1%
MENORCA	MAH	534949	6,3%	4738	10,3%	313	-3,3%
LANZAROTE	ACE	530312	7,6%	4413	11,4%	318	2,0%
BUCHAREST	OTP	528768	10,1%	6889	8,2%	1585	18,1%
PALERMO	PMO	522506	0,1%	4800	-3,2%	126	35,5%
HANOVER	HAJ	521220	8,4%	5662	4,8%	279	15,3%
RIGA	RIX	518644	21,1%	6671	18,9%	681	72,5%

Airport		Passengers		Commercial movements		Freight	
		 August 2010		 August 2010		 August 2010	
TOULOUSE	TLS	492928	2,4%	5807	2,5%	3108	-9,0%
CHARLEROI	CRL	490641	35,9%	3165	33,2%	N/A	N/A
FUERTEVENTURA	FUE	453909	13,5%	3862	10,1%	142	-17,3%
BERGEN	BGO	453864	10,9%	6237	5,0%	257	21,0%
ROME	CIA	446331	-3,4%	2905	-5,3%	1172	13,1%
BASEL	BSL	437752	13,4%	6812	5,9%	3558	69,4%
MALTA	MLA	428877	13,2%	3404	8,1%	974	-12,1%
CAGLIARI	CAG	414804	0,2%	3516	-7,1%	149	63,7%
SEVILLA	SVQ	407464	-1,0%	3497	-4,4%	358	26,4%
HAHN	HHN	388709	-10,5%	3468	-7,3%	16309	52,0%
BILBAO	BIO	383604	3,9%	3904	2,1%	163	0,2%
GOTHENBURG	GOT	382028	19,2%	5000	11,1%	4188	9,8%
TENERIFE	TFN	378162	-2,9%	4717	-5,3%	1044	-33,9%
BARI	BRI	372758	20,0%	3260	18,6%	15	3,8%
NUREMBERG	NUE	369668	8,1%	4596	2,1%	585	-10,7%
BORDEAUX	BOD	360094	19,2%	3932	13,8%	448	21,1%
BELGRADE	BEG	358756	19,3%	4399	12,7%	530	-7,7%
SOFIA	SOF	341635	8,5%	3779	5,6%	1042	-1,8%
OLBIA	OLB	334877	-1,4%	3170	-2,4%	25	3,9%
TURIN	TRN	322773	19,0%	3433	7,1%	53	-37,7%
STAVANGER	SVG	309465	9,1%	4191	0,4%	302	23,7%
TRONDHEIM	TRD	308282	6,3%	4132	3,4%	138	4,7%
VARNA	VAR	292443	0,6%	2183	1,5%	7	-22,9%
FUNCHAL	FNC	267451	5,3%	2272	7,4%	501	0,5%
DUBROVNIK	DBV	261159	20,6%	2166	17,0%	49	-26,7%
ABERDEEN	ABZ	258894	-4,1%	8290	-0,9%	521	37,8%
EINDHOVEN	EIN	252132	34,6%	1717	34,8%	N/A	N/A
SPLIT	SPU	249900	15,1%	2264	134,9%	96	-3,4%
REUS	REU	239840	-12,2%	1471	-13,1%	4	85,8%
ZAGREB	ZAG	231444	4,4%	3294	5,3%	616	-5,7%
GLASGOW PRESTWICK	PIK	196593	8,6%	1380	2,0%	1229	-0,2%
BRINDISI	BDS	188636	51,0%	1468	50,4%	13	92,9%
SOUTHAMPTON	SOU	183500	-1,0%	4092	7,0%	11	-42,1%
LUXEMBOURG	LUX	183405	7,2%	4176	4,6%	56959	21,4%
FLORENCE	FLR	166288	3,3%	2263	3,6%	15	-31,8%
SHANNON	SNN	164895	-43,8%	1856	-32,0%	1486,385	4,3%
BODO	BOO	151236	9,1%	3235	4,7%	89	-49,8%
VILNIUS	VNO	150779	8,6%	2190	12,6%	301	38,1%
TROMSOE	TOS	150334	1,9%	2846	9,6%	142	-14,8%
SALZBURG	SZG	143894	3,5%	1613	4,9%	11	-19,1%
MALMO	MMX	143356	3,1%	1866	2,2%	2298	26,2%
STOCKHOLM	BMA	142980	3,0%	2923	-0,3%	20	5,3%
TALLINN	TLL	138427	5,9%	2444	9,9%	675	-30,0%
BOURNEMOUTH	BOH	101535	5,9%	912	16,3%	N/A	N/A
SKOPJE	SKP	85807	13,3%	1143	10,9%	163	20,3%
STRASBOURG	SXB	81464	-1,7%	1716	-5,4%	10	-37,5%
AALESUND	AES	75131	14,7%	859	3,5%	30	-33,2%
KRISTIANSAND	KRS	75115	9,9%	1612	2,3%	28	1,3%
UMEÅ	UME	65905	6,4%	1039	8,6%	7	-22,2%
TRIESTE	TRS	65829	-0,2%	727	-14,5%	10	-41,2%
TOULON	TLN	63788	-12,9%	1336	1,2%	N/A	N/A
SARAJEVO	SJJ	60475	-0,4%	516	-5,1%	145	-6,5%
LIEGE	LGG	58946	-15,0%	2447	8,2%	47036	38,4%
HAUGESUND	HAU	51794	3,0%	569	-4,7%	24	4,9%
HUMBERSIDE	HUY	37124	-8,9%	1805	4,2%	55	-57,2%
OHRID	OHD	7578	-12,0%	89	-21,9%	N/A	N/A

Airport		Passengers		Commercial movements		Freight	
		 January - August 2010		 January - August 2010		 January - August 2010	
London	LHR	43484496	-1,6%	297992	-3,8%	974229	21,2%
Paris	CDG	38859861	-0,6%	328806	-6,2%	N/A	N/A
Frankfurt	FRA	34993928	3,1%	300073	-0,3%	1439545	28,7%
Madrid	MAD	33377152	2,8%	289457	-0,1%	237050	29,6%
Amsterdam	AMS	29888142	2,0%	256365	-3,2%	977272	21,3%
Rome	FCO	24036252	6,7%	214993	0,1%	101055	28,8%
Munich	MUC	22464913	4,6%	241577	-4,2%	174420	28,1%
London	LGW	21295375	-3,6%	157793	-4,9%	69766	54,5%
Istanbul	IST	21231879	7,8%	180341	2,8%	293614	31,0%
Barcelona	BCN	19167556	3,7%	180517	-4,1%	69194	26,1%
Paris	ORY	16980204	-1,4%	143799	-3,5%	N/A	N/A
Antalya	AYT	15093491	19,7%	98141	18,2%	6327	60,1%
Zurich	ZRH	14961927	3,7%	150509	1,5%	199604	21,6%
Palma De Mallorca	PMI	14898566	-1,3%	120668	-1,9%	11608	2,3%
Moscow	DME	14737577	22,4%	137710	17,2%	84325	27,9%
Copenhagen	CPH	14198025	7,6%	157924	3,1%	N/A	N/A
Vienna	VIE	12923244	7,5%	162384	0,7%	145221	31,4%
Moscow	SVO	12750037	32,2%	117865	15,2%	79512	27,6%
Milan	MPX	12716618	6,8%	126193	2,4%	270368	32,1%
London	STN	12643835	-7,3%	97614	-7,8%	132201	14,4%
Oslo	OSL	12469408	3,9%	137904	-0,5%	30597	-9,7%
Düsseldorf	DUS	12314592	5,1%	134477	0,1%	57575	45,8%
Manchester	MAN	12009597	-7,7%	99560	-11,3%	75592	17,7%
Brussels	BRU	11351200	-1,1%	136070	-5,3%	286825	7,1%
Stockholm	ARN	10952980	2,1%	118489	-3,4%	44919	25,6%
Athens	ATH	10615468	-3,1%	121769	-5,9%	58028	-5,5%
Berlin	TXL	9603175	4,1%	100158	1,2%	14011	35,1%
Lisbon	LIS	9388944	4,8%	92540	3,6%	62396	20,9%
Helsinki	HEL	8507730	0,2%	110677	-2,4%	91246	31,4%
Hamburg	HAM	8394068	4,8%	91111	1,6%	46947	12,5%
Malaga	AGP	8139365	1,4%	68509	1,5%	2016	-14,0%
Geneva	GVA	8097729	4,0%	84339	-1,2%	24865	34,7%
Prague	PRG	7717827	-0,9%	102532	-5,8%	32281	45,3%
Istanbul	SAW	7459732	90,0%	63174	89,2%	14013	95,1%
Nice	NCE	6572530	-3,9%	80885	-2,6%	10067	46,5%
Cologne	CGN	6526004	0,8%	80448	0,4%	400981	14,7%
Alicante	ALC	6390329	3,1%	50212	2,7%	2091	-0,4%
Moscow	VKO	6374664	26,3%	70604	13,5%	23114	38,1%
Gran Canaria	LPA	6206933	3,0%	64729	2,6%	15656	-5,0%
Stuttgart	STR	6010810	0,8%	70638	-5,6%	13461	25,0%
Warsaw	WAW	5858107	4,8%	81696	1,5%	26074	25,3%
Birmingham	BHX	5827389	-6,9%	58754	-9,2%	14735	97,6%
Edinburgh	EDI	5776405	-6,0%	68362	-6,3%	14453	-9,5%
Budapest	BUD	5406459	0,9%	66594	-5,6%	39036	25,3%
Milan	LIN	5379786	-4,0%	60851	-4,1%	10058	10,6%
Milan	BGY	5170699	7,3%	43173	4,1%	67502	5,6%
Tenerife	TFS	4757917	1,4%	32244	3,9%	2770	-24,4%
Berlin	SXF	4755548	6,9%	41638	4,8%	3119	26,4%
Glasgow	GLA	4362230	-10,6%	46264	-8,3%	2560	44,8%
Naples	NAP	3727512	4,3%	37337	-1,5%	630	-7,0%
Ibiza	IBZ	3696823	9,5%	37194	6,9%	2298	5,9%
Faro	FAO	3690311	4,2%	27581	6,1%	210	-58,4%
Bologna	BLQ	3623025	14,2%	42887	7,9%	17047	10,0%
Girona	GRO	3514737	-3,0%	25850	-2,4%	28	-33,9%
Porto	OPO	3488822	16,8%	36534	4,0%	19271	11,0%
Charleroi	CRL	3336232	34,4%	23302	40,8%	N/A	N/A
Valencia	VLC	3318263	2,3%	42369	-4,3%	7436	20,5%
Lanzarote	ACE	3308803	5,7%	29786	9,9%	2458	-15,3%
Hanover	HAJ	3284086	-1,4%	38262	-7,0%	3102	33,5%
Bergen	BGO	3141979	2,5%	45868	0,9%	1821	3,5%
Riga	RIX	3134340	17,0%	43919	13,2%	4329	37,9%
Rome	CIA	2979057	-6,7%	21260	-7,4%	11321	3,5%
East Midlands	EMA	2870552	-11,6%	38922	-9,3%	175625	7,8%
Sevilla	SVQ	2796912	2,2%	28391	-1,1%	3691	10,1%
Fuerteventura	FUE	2731078	9,1%	25011	7,1%	1136	-12,5%
Tenerife	TFN	2708037	0,1%	38003	-0,6%	9954	-16,7%
Basel	BSL	2663660	3,8%	37341	2,5%	27497	45,7%
Gothenburg	GOT	2652255	9,1%	37250	4,6%	26432	12,3%

Airport	Passengers		Commercial movements		Freight		
		January - August 2010		January - August 2010		January - August 2010	
Bilbao	BIO	2627005	7,2%	31951	3,0%	1668	-5,2%
Bordeaux	BOD	2437888	9,1%	30914	0,6%	4329	9,3%
Hahn	HHN	2381953	-8,2%	24118	-4,9%	98487	64,8%
Turin	TRN	2379779	8,3%	28638	-7,1%	705	-18,5%
Cagliari	CAG	2328765	3,4%	22487	-3,8%	1209	-3,9%
Trondheim	TRD	2249740	0,6%	30790	-0,2%	1072	-10,6%
Bari	BRI	2245108	17,7%	21790	9,1%	137	-27,1%
Stavanger	SVG	2222303	-0,9%	31354	-6,3%	1802	-6,2%
Sofia	SOF	2220418	3,8%	27067	-0,7%	8404	-4,1%
Malta	MLA	2218271	11,8%	20064	6,7%	9951	-0,6%
Menorca	MAH	1844489	3,1%	19559	2,1%	1678	-7,7%
Aberdeen	ABZ	1821818	-8,7%	60162	-7,1%	3418	0,0%
Brindisi	BDS	1389810	35,8%	13030	20,7%	640	3,6%
Stockholm	BMA	1264691	2,5%	25134	1,7%	136	16,2%
Southampton	SOU	1183564	-2,3%	27495	-0,2%	54	-59,1%
Tromsø	TOS	1098543	0,2%	20348	2,7%	1328	-5,6%
Luxembourg	LUX	1079433	3,4%	31344	0,4%	460714	16,7%
Bodo	BOO	1067327	2,6%	23630	0,0%	728	-20,4%
Malmo	MMX	1036253	2,3%	14285	0,5%	9377	22,4%
Reus	REU	1022388	-17,3%	7302	-18,0%	N/A	N/A
Vilnius	VNO	979225	11,6%	17032	23,0%	2289	33,5%
Dubrovnik	DBV	923015	12,2%	8846	11,8%	275	-23,5%
Aalesund	AES	537086	5,6%	6697	0,8%	312	-39,7%
Kristiansand	KRS	527521	-5,1%	11661	-9,7%	210	-18,4%
Haugesund	HAU	359367	8,4%	4346	12,4%	171	-21,1%
Liege	LGG	226512	-14,8%	19046	12,2%	419683	46,3%

----- Preliminary traffic figures -----

Total commercial passengers

International passengers (enplaned + deplaned) + **domestic passengers** (enplaned + deplaned) + **direct transit passengers** (passengers who arrive at and depart from the airport on a flight bearing the same number. They are counted only ONCE).

Commercial movements

Landing or take off of an aircraft operating a scheduled or non scheduled commercial service.

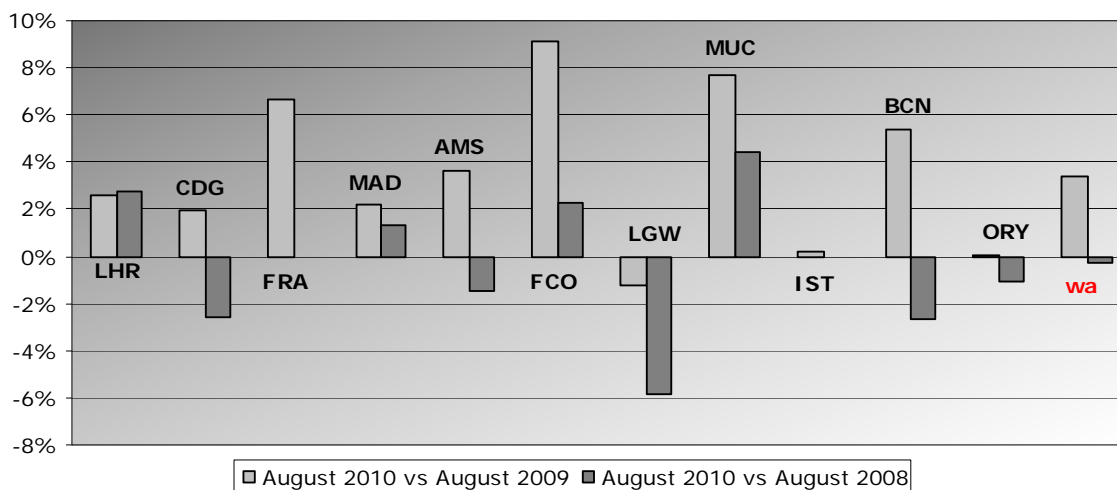
Freight

Freight loaded and unloaded (arriving or departing) at the airport. Freight comprises goods, newspapers, diplomatic bags, parcel post and express parcel.

Group 1
Airports welcoming more than 25 million passengers per year
(percentage traffic variation August 2010 versus 2009 and 2008)

Airport	2010v2009 variation %	2010v2008 variation %
LHR	2,6%	2,7%
CDG	1,9%	-2,6%
FRA	6,6%	N/A
MAD	2,2%	1,3%
AMS	3,6%	-1,5%
FCO	9,1%	2,3%
LGW	-1,2%	-5,9%
MUC	7,7%	4,4%
IST	0,2%	N/A
BCN	5,4%	-2,7%
ORY	0,0%	-1,1%
wa*	3,4%	-0,3%

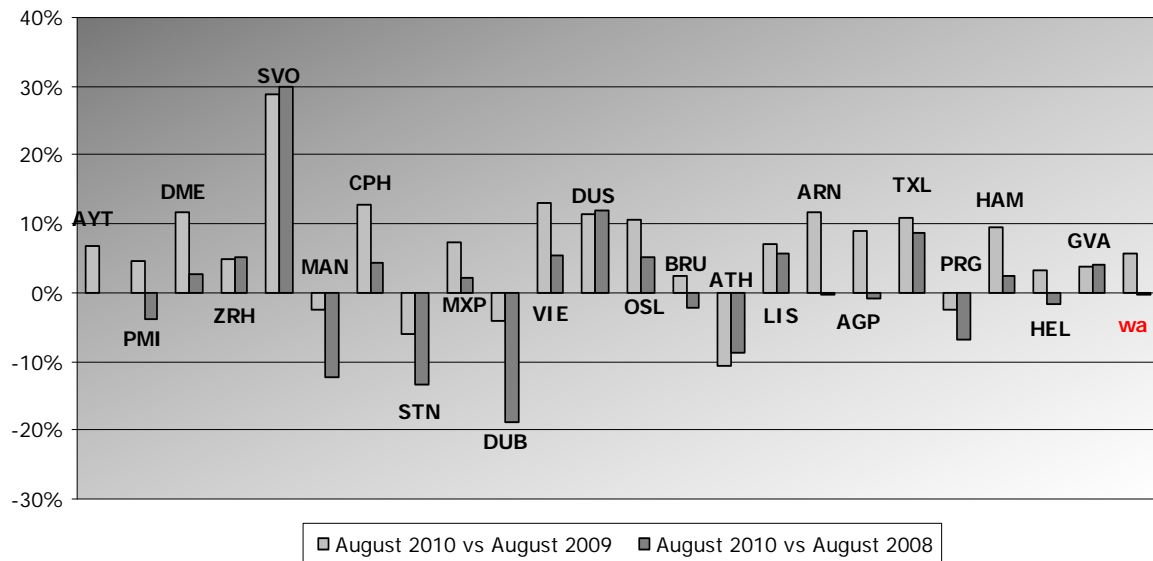
*weighted average=SUM(%change*pax)/SUM(pax)



Group 2
Airports welcoming between 10 and 25 million passengers
per year (percentage traffic variation August 2010 versus 2009 and 2008)

Airport	2010v2009 variation %	2010v2008 variation %
AYT	6,7%	N/A
PMI	4,7%	-3,9%
DME	11,7%	2,8%
ZRH	5,0%	5,1%
SVO	29,0%	30,0%
MAN	-2,6%	-12,4%
CPH	12,9%	4,4%
STN	-6,1%	-13,4%
MXP	7,2%	2,1%
DUB	-4,3%	-18,7%
VIE	13,0%	5,3%
DUS	11,5%	11,9%
OSL	10,7%	5,2%
BRU	2,4%	-2,1%
ATH	-10,6%	-8,8%
LIS	7,1%	5,7%
ARN	11,8%	-0,4%
AGP	8,8%	-0,7%
TXL	10,8%	8,7%
PRG	-2,4%	-6,7%
HAM	9,5%	2,4%
HEL	3,3%	-1,8%
GVA	3,8%	4,1%
wa*	5,8%	-0,2%

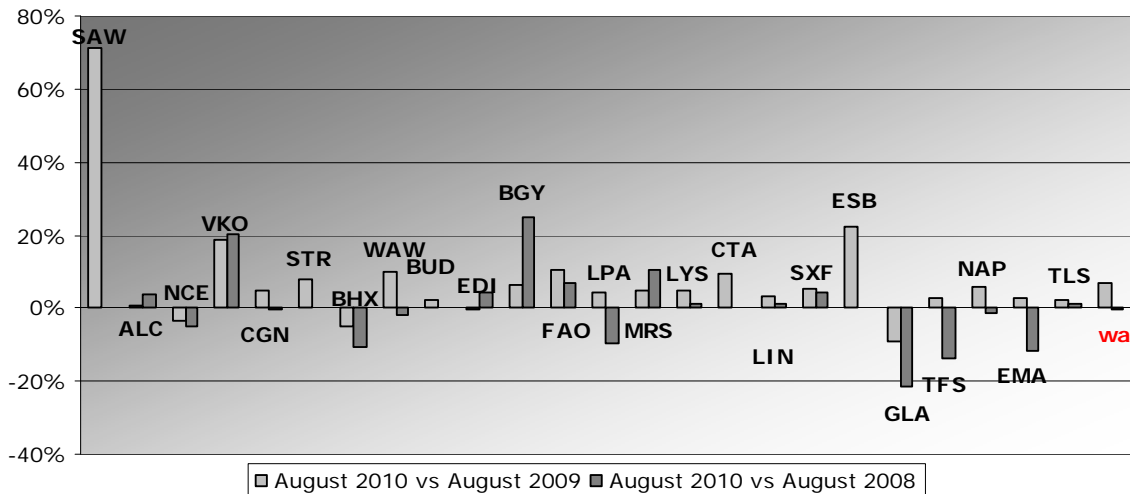
*weighted average = $\text{SUM}(\% \text{change} * \text{pax}) / \text{SUM}(\text{pax})$



Group 3
Airports welcoming between 5 and 10 million passengers
per year (percentage traffic variation August 2010 versus 2009 and 2008)

Airport	2010v2009 variation %	2010v2008 variation %
SAW	71,1%	N/A
ALC	0,6%	3,8%
NCE	-3,4%	-4,8%
VKO	18,5%	20,1%
CGN	4,9%	-0,6%
STR	7,8%	0,0%
BHX	-4,8%	-10,6%
WAW	9,9%	-2,1%
BUD	2,3%	-0,1%
EDI	-0,2%	4,5%
BGY	6,3%	24,7%
FAO	10,5%	6,7%
LPA	4,5%	-9,4%
MRS	4,6%	10,7%
LYS	4,7%	1,2%
CTA	9,3%	N/A
LIN	3,1%	1,1%
SXF	5,1%	4,4%
ESB	22,3%	N/A
GLA	-9,3%	-21,6%
TFS	3,0%	-13,7%
NAP	5,9%	-1,2%
EMA	2,9%	-11,4%
TLS	2,4%	1,4%
wa*	6,9%	-0,2%

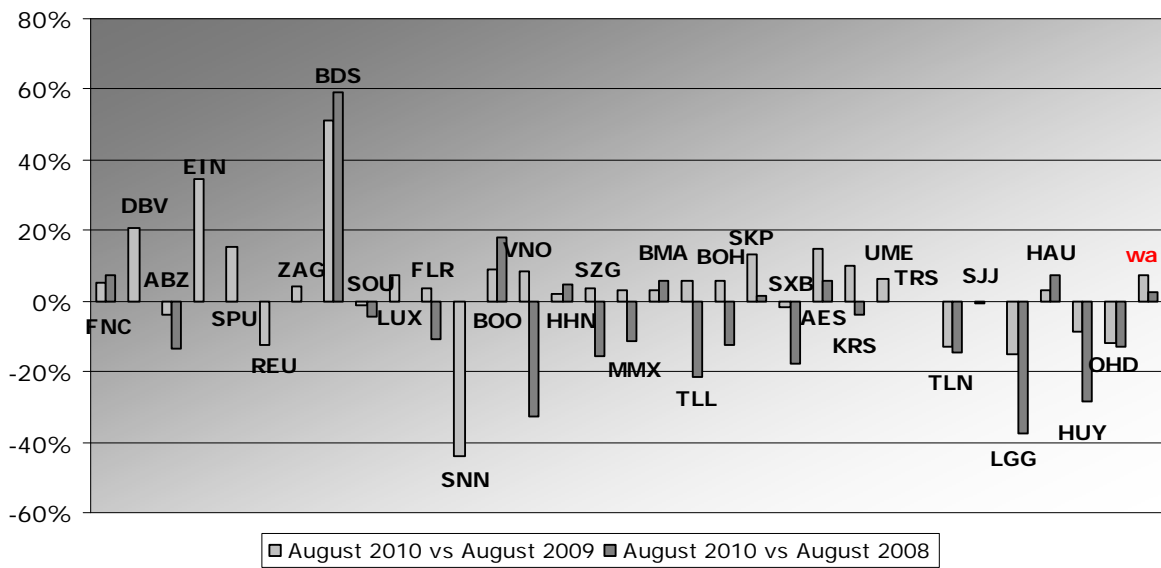
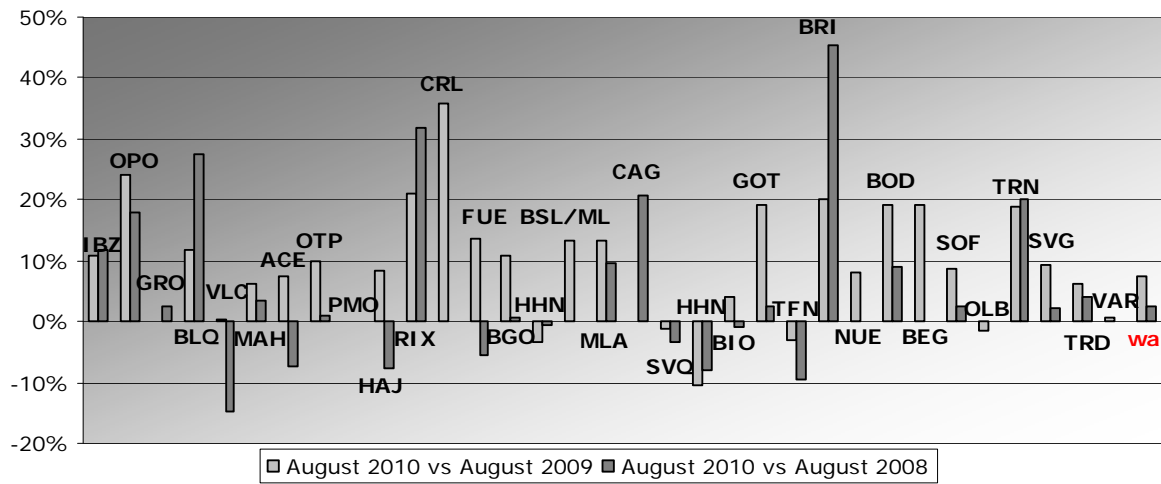
*weighted average = $\text{SUM}(\% \text{change} * \text{pax}) / \text{SUM}(\text{pax})$



Group 4
Airports welcoming less than 5 million passengers
per year (percentage traffic variation August 2010 versus 2009 and 2008)

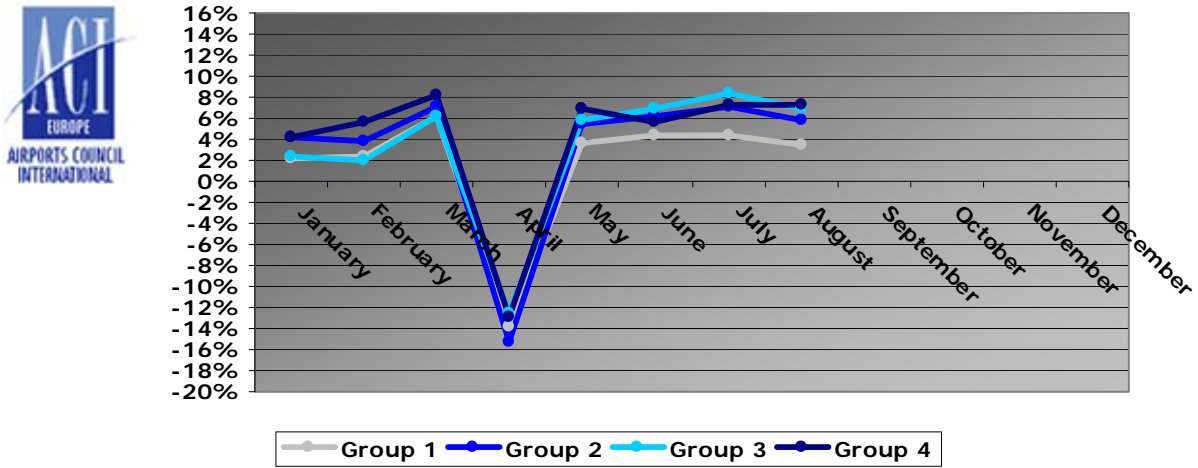
Airport	2010v2009 variation %	2010v2008 variation %
IBZ	10,8%	11,6%
OPO	24,1%	17,8%
GRO	0,1%	2,5%
BLQ	11,9%	27,6%
VLC	0,3%	-14,7%
MAH	6,3%	3,6%
ACE	7,6%	-7,4%
OTP	10,1%	0,9%
PMO	0,1%	N/A
HAJ	8,4%	-7,5%
RIX	21,1%	31,9%
CRL	35,9%	N/A
FUE	13,5%	-5,5%
BGO	10,9%	0,5%
CIA	-3,4%	-0,7%
BSL/ML	13,4%	N/A
MLA	13,2%	9,6%
CAG	0,2%	20,8%
SVQ	-1,0%	-3,3%
HHN	-10,5%	-8,0%
BIO	3,9%	-0,8%
GOT	19,2%	2,6%
TFN	-2,9%	-9,5%
BRI	20,0%	45,4%
NUE	8,1%	N/A
BOD	19,2%	9,1%
BEG	19,3%	N/A
SOF	8,5%	2,5%
OLB	-1,4%	N/A
TRN	19,0%	20,0%
SVG	9,1%	2,2%
TRD	6,3%	3,9%
VAR	0,6%	N/A
FNC	5,3%	7,6%
DBV	20,6%	N/A
ABZ	-4,1%	-13,5%
EIN	34,6%	N/A
SPU	15,1%	N/A
REU	-12,2%	N/A
ZAG	4,4%	N/A
BDS	51,0%	58,9%
SOU	-1,0%	-4,6%
LUX	7,2%	-0,2%
FLR	3,3%	-10,8%
SNN	-43,8%	N/A
BOO	9,1%	17,9%
VNO	8,6%	-32,8%
TOS	1,9%	4,7%
SZG	3,5%	-15,6%
MMX	3,1%	-11,2%
BMA	3,0%	5,8%
TLL	5,9%	-21,6%
BOH	5,9%	-12,3%
SKP	13,3%	1,3%
SXB	-1,7%	-17,8%
AES	14,7%	5,9%
KRS	9,9%	-3,7%
UME	6,4%	N/A
TRS	-0,2%	N/A
TLN	-12,9%	-14,7%
SJJ	-0,4%	N/A
LGG	-15,0%	-37,7%
HAU	3,0%	7,5%
HUY	-8,9%	-28,7%
wa*	7,3%	2,4%

*weighted average =SUM(%change*pax)/SUM(pax)



Year-to-date airport passenger trends

The graphic illustrates and compares the trends of the different airport Groups 1, 2, 3 and 4 for 2010.



The graphic compares the amount of total commercial passengers 2010 with 2009. The airports included, in this graphic, are: LHR, FRA, CDG, AMS, MAD, IST, LGW, FCO, MUC, BCN, ORY, STN, MAN, MXP, ZRH, CPH, ARN, DUB, OSL, BRU, VIE, DUS, ATH, PMI, AGP, DME, HEL, TXL, LIS, HAM, PRG.

