



# Airport Traffic Report

## October 2010

## European passenger traffic up 8.8% during October 2010

The '**ACI EUROPE Airport Traffic Report - October 2010**' includes **126 airports** in total.




The overall **passenger** traffic at European airports increased by **8.8%** in **October 2010** compared with October 2009. The overall **freight** traffic among European airports increased **15.4%** in October 2010 when compared with the corresponding month in 2009. The overall figure for **movements** at European airports increased **4.2%** in October 2010 when compared with October 2009.




The accumulated figure for **passenger** traffic **January to October 2010** increase by **4.7%** compared with the corresponding period 2009. The accumulated figure for **freight** traffic during **January to October** increased by **21.9%** and **movements** increased by **0.5%** during the corresponding period when compared with 2009.




Airports welcoming more than 25 million passengers per year (Group 1), airports welcoming between 10 and 25 million passengers (Group 2), airports welcoming between 5 and 10 million passengers (Group 3) and airports welcoming less than 5 million passengers per year (Group 4) reported an average increase/decrease of **7.4%**, **9.8%**, **8.3%** and **9.7%** respectively when compared with October 2009. The same comparison of October 2010 with October 2008 demonstrates an average increase/decrease of **6.6%**, **6.7%**, **3.0%** and **3.5%** respectively.




Examples of airports that experienced the highest increase in passenger traffic per group, when comparing October 2010 with October 2009, include:

- **Group 1 airports** – Barcelona (+**18.1%**), Rome FCO (+**11.5%**), Munich (+**9.1%**) and Frankfurt (+**8.5%**)
- **Group 2 airports** – Moscow SVO (+**31.5%**), Antalya (+**26.6%**), Malaga (+**16.0%**) and Moscow DME (+**15.7%**)
- **Group 3 airports** – Istanbul SAW (+**64.7%**), Ankara (+**36.6%**), Moscow VKO (+**18.5%**) and Faro (+**13.5%**)
- **Group 4 airports** – Brindisi (+**50.2%**), Podgorica (+**42.5%**), Charleroi (+**39.1%**), and Trieste (+**26.7%**).

| Airport           | Passengers  |              | Commercial movements  |              | Freight   |              |        |
|-------------------|---|--------------|---|--------------|---|--------------|--------|
|                   |  | October 2010 |  | October 2010 |  | October 2010 |        |
| LONDON            | LHR   | 6108722      | 7,2%  | 40741        | 6,0%  | 138301       | 14,7%  |
| PARIS             | CDG   | 5261741      | 3,8%  | 43080        | -2,9%   | 198500       | 22,5%  |
| FRANKFURT         | FRA   | 5019267      | 8,5%  | 41368        | 4,3%  | 203137       | 16,2%  |
| MADRID            | MAD   | 4462941      | 5,4%  | 37685        | 1,1%  | 35050        | 12,5%  |
| AMSTERDAM         | AMS   | 4314488      | 8,2%  | 35453        | 3,3%  | 141156       | 15,2%  |
| MUNICH            | MUC   | 3396114      | 9,1%  | 34364        | 2,5%  | 26652        | 30,3%  |
| ROME              | FCO   | 3395721      | 11,5%   | 28786        | 5,8%  | 14393        | 11,9%  |
| ISTANBUL          | IST   | 2938420      | 6,2%  | 24050        | 3,5%  | 43670        | 15,3%  |
| LONDON            | LGW   | 2851590      | 0,8%  | 21214        | -1,5%   | 9709         | 29,7%  |
| BARCELONA         | BCN   | 2798176      | 18,1%   | 25367        | 9,1%  | 9203         | 3,9%   |
| ANTALYA           | AYT   | 2473143      | 26,6%   | 16204        | 21,1%   | 356          | -40,6% |
| ZURICH            | ZRH   | 2234001      | 8,2%  | 20815        | 5,1%  | 24937        | 11,0%  |
| PARIS             | ORY   | 2156810      | 7,2%  | 18218        | 1,0%  | 8300         | -2,5%  |
| PALMA DE MALLORCA | PMI   | 2053877      | 3,8%  | 16853        | 1,6%  | 1517         | -4,9%  |
| COPENHAGEN        | CPH   | 2047985      | 13,4%   | 21951        | 7,4%  | N/A          | N/A    |
| MOSCOW            | DME   | 1992504      | 15,7%   | 18943        | 13,4%   | 14626        | 14,6%  |
| DÜSSELDORF        | DUS   | 1986393      | 11,0%   | 19383        | 3,8%  | 7975         | 15,5%  |
| VIENNA            | VIE   | 1828204      | 11,4%   | 21673        | 3,9%  | 19511        | 0,6%   |
| OSLO              | OSL   | 1820662      | 8,4%  | 19786        | 2,4%  | 4037         | 3,9%   |
| MOSCOW            | SVO   | 1754487      | 31,5%   | 15917        | 18,4%   | 11907        | 12,3%  |
| LONDON            | STN   | 1721106      | -3,1%   | 12863        | -7,4%   | 18673        | 3,0%   |
| DUBLIN            | DUB   | 1710348      | 1,0%  | 13536        | -0,6%   | 9334         | 11,5%  |
| MILAN             | MXP   | 1652014      | 11,0%   | 16509        | 6,2%  | 40357        | 17,6%  |
| MANCHESTER        | MAN   | 1648189      | 2,0%  | 13634        | -1,5%   | 10903        | 4,2%   |
| BRUSSELS          | BRU   | 1615784      | 8,0%  | 18670        | 1,9%  | 38075        | 10,8%  |
| STOCKHOLM         | ARN   | 1603944      | 11,4%   | 17800        | 4,9%  | 8009         | 23,2%  |
| BERLIN            | TXL   | 1531968      | 11,6%   | 14405        | 5,1%  | 2038         | 40,5%  |
| HAMBURG           | HAM   | 1328858      | 10,4%   | 12887        | -0,4%   | N/A          | N/A    |
| ATHENS            | ATH   | 1312474      | -4,4%   | 14882        | -6,1%   | 7630         | -4,2%  |
| LISBON            | LIS   | 1293181      | 11,6%   | 12144        | 9,4%  | 8138         | 8,0%   |
| MALAGA            | AGP   | 1276910      | 16,0%   | 9840         | 10,4%   | 282          | -6,9%  |
| HELSINKI          | HEL   | 1211723      | 6,4%  | 16009        | 6,2%  | 14717        | 26,7%  |
| PRAGUE            | PRG   | 1083435      | 7,0%  | 13755        | 1,0%  | 5396         | 45,6%  |
| ISTANBUL          | SAW   | 1055865      | 64,7%   | 8968         | 63,7%   | 2016         | 66,2%  |
| GENEVA            | GVA   | 1009368      | 7,9%  | 10566        | 4,3%  | 3574         | 17,5%  |
| COLOGNE           | CGN   | 992865       | 4,3%  | 11297        | 1,1%  | 62209        | 21,6%  |
| ALICANTE          | ALC   | 953780       | 8,0%  | 7108         | 0,9%  | 273          | -4,6%  |
| STUTT GART        | STR   | 938078       | 7,8%  | 10030        | -1,9%   | 1685         | -9,0%  |
| NICE              | NCE   | 868462       | 1,6%  | 9942         | -0,2%   | 1335         | 16,4%  |
| EDINBURGH         | EDI   | 853509       | 3,4%  | 9576         | 2,7%  | 1586         | -21,7% |
| MOSCOW            | VKO   | 826887       | 18,5%   | 9315         | 11,5%   | 3407         | 30,0%  |
| GRAN CANARIA      | LPA   | 824888       | 7,3%  | 8218         | 3,0%  | 2368         | -2,0%  |
| BIRMINGHAM        | BHX   | 793762       | -0,3%   | 8042         | -2,9%   | 2059         | 33,0%  |
| WARSAW            | WAW   | 788599       | 9,1%  | 10929        | 5,3%  | 3706         | 18,9%  |
| BUDAPEST          | BUD   | 773420       | 0,9%  | 9082         | 0,9%  | 5371         | 15,8%  |
| MILAN             | LIN   | 760252       | 8,7%  | 7909         | -0,8%   | 1462         | 20,1%  |
| ANKARA            | ESB   | 738092       | 36,6%   | 6333         | 39,9%   | 1140         | -26,5% |
| BERLIN            | SXF   | 727300       | 8,6%  | 6073         | 9,0%  | 396          | 6,6%   |
| LYON              | LYS   | 726892       | 7,4%  | 10315        | -2,1%   | 2668         | 0,9%   |
| MILAN             | BGY   | 684338       | 11,4%   | 5637         | 7,6%  | 9827         | 6,5%   |
| TENERIFE          | TFS   | 684004       | 12,3%   | 4337         | 8,2%  | 382          | -12,2% |
| VENICE            | VCE   | 666734       | 4,6%  | 6282         | 3,0%  | 3220         | 6,9%   |
| GLASGOW           | GLA   | 664284       | -7,2%   | 6553         | -3,1%   | 121          | -43,8% |
| FARO              | FAO   | 590852       | 13,5%   | 4228         | 11,5%   | 23           | -28,0% |
| TOULOUSE          | TLS   | 572467       | 3,7%  | 7103         | 4,2%  | 4281         | -9,9%  |
| CATANIA           | CTA   | 559650       | 9,8%  | 4904         | 2,0%  | 791          | 26,0%  |
| HANOVER           | HAJ   | 555050       | 8,3%  | 5605         | -1,5%   | 409          | 62,9%  |
| NAPLES            | NAP   | 530451       | 5,5%  | 5110         | -0,2%   | 85           | -16,4% |
| CHARLEROI         | CRL   | 505140       | 39,1%   | 3322         | 35,3%   | 1            | 120,0% |
| BOLOGNA           | BLQ   | 499543       | 17,5%   | 5612         | 5,4%  | 2384         | 1,9%   |
| BERGEN            | BGO   | 474561       | 9,1%  | 6757         | 6,6%  | 199          | -14,1% |
| PORTO             | OPO   | 460681       | 18,6%   | 4750         | 10,8%   | 2453         | -0,2%  |
| GIRONA            | GRO   | 450322       | -3,6%   | 3250         | -5,2%   | 8            | 976,1% |
| BUCHAREST         | OTP   | 442849       | 12,5%   | 6417         | 7,4%  | 1811         | -5,1%  |
| LANZAROTE         | ACE   | 440911       | 11,0%   | 3843         | 15,4%   | 380          | 23,5%  |
| VALENCIA          | VLC   | 430578       | 4,7%  | 5595         | 1,4%  | 1003         | 13,8%  |
| BASEL             | BSL   | 429876       | 13,5%   | 5071         | 6,1%  | 3874         | 19,5%  |
| RIGA              | RIX   | 428898       | 14,3%   | 5574         | 7,6%  | 796          | 75,4%  |

| Airport       | Passengers  |              |        | Commercial movements  |              | Freight   |              |
|---------------|---|--------------|--------|---|--------------|---|--------------|
|               |  | October 2010 |        |  | October 2010 |  | October 2010 |
| ROME          | CIA   | 413434       | -1,1%  | 2852  | -3,2%        | 1659  | 9,7%         |
| GOTHENBURG    | GOT   | 411843       | 20,7%  | 5745  | 13,4%        | 4762  | 13,9%        |
| EAST MIDLANDS | EMA   | 406509       | -2,5%  | 5323  | -2,3%        | 25690   | 7,2%         |
| FUERTEVENTURA | FUE   | 388538       | 21,1%  | 3314  | 14,5%        | 138   | -10,9%       |
| SEVILLA       | SVQ   | 379054       | 7,8%   | 3719  | 3,3%         | 433   | 6,0%         |
| PALERMO       | PMO   | 371450       | 4,8%   | 3741  | -3,0%        | 76  | -14,6%       |
| TENERIFE      | TFN   | 368259       | 5,5%   | 4835  | -2,5%        | 1589  | -1,9%        |
| IBIZA         | IBZ   | 356996       | 14,0%  | 4064  | 13,9%        | 250   | -4,7%        |
| TRONDHEIM     | TRD   | 356366       | 5,5%   | 4684  | 8,1%         | 154   | -1,2%        |
| HAHN          | HHN   | 354731       | 0,4%   | 3326  | 4,2%         | 16602   | 51,5%        |
| NUREMBERG     | NUE   | 342852       | 11,2%  | 5041  | 3,9%         | 673   | -1,9%        |
| BILBAO        | BIO   | 338370       | 11,6%  | 4028  | 2,0%         | 234   | -5,7%        |
| STAVANGER     | SVG   | 336069       | 4,5%   | 4686  | 0,4%         | 243   | -3,8%        |
| BORDEAUX      | BOD   | 333397       | 11,3%  | 4191  | 3,6%         | 523   | -8,2%        |
| MALTA         | MLA   | 333014       | 18,4%  | 2920  | 11,6%        | 1453  | -6,7%        |
| TURIN         | TRN   | 303985       | 16,0%  | 3813  | 4,0%         | 82  | -4,3%        |
| BARI          | BRI   | 302086       | 25,3%  | 2773  | 23,3%        | 17  | -25,4%       |
| SOFIA         | SOF   | 284546       | 13,6%  | 3704  | 12,8%        | 1273  | 14,1%        |
| ABERDEEN      | ABZ   | 263526       | -5,0%  | 7925  | -7,0%        | 378   | -8,0%        |
| BILLUND       | BLL   | 260959       | 16,0%  | 3460  | 12,1%        | 5696  | 33,9%        |
| BELGRADE      | BEG   | 226122       | 19,6%  | 3437  | 13,8%        | 778   | 33,4%        |
| STOCKHOLM     | BMA   | 214719       | 6,2%   | 4295  | 8,1%         | 23  | 4,5%         |
| KATOWICE      | KTW   | 194806       | 1,4%   | 1962  | 8,1%         | 934   | 52,9%        |
| FUNCHAL       | FNC   | 194523       | 1,0%   | 1805  | 2,0%         | 513   | -2,9%        |
| ZAGREB        | ZAG   | 187579       | 7,3%   | 3076  | 1,1%         | 620   | -18,8%       |
| MENORCA       | MAH   | 171354       | 3,3%   | 2110  | 5,0%         | 188   | -11,3%       |
| FLORENCE      | FLR   | 170826       | 9,6%   | 2249  | 6,0%         | 15  | -21,1%       |
| SOUTHAMPTON   | SOU   | 156754       | 1,0%   | 3697  | 6,8%         | 16  | -17,6%       |
| LUXEMBOURG    | LUX   | 155647       | 11,0%  | 4206  | 3,7%         | 64353   | 11,2%        |
| KEFLAVIK      | KEF   | 154473       | 21,8%  | 1906  | 15,0%        | 3227  | -5,0%        |
| MALMO         | MMX   | 153473       | 6,0%   | 2117  | 2,7%         | 2713  | 20,4%        |
| BODO          | BOO   | 150555       | 8,3%   | 3276  | 2,6%         | 105   | -17,6%       |
| TROMSOE       | TOS   | 147336       | 0,9%   | 2684  | 2,1%         | 157   | -18,4%       |
| BRINDISI      | BDS   | 146266       | 50,2%  | 1195  | 30,9%        | 4   | -26,2%       |
| REUS          | REU   | 144656       | -7,1%  | 1236  | 4,7%         | 82  | 18017,8%     |
| TALLINN       | TLL   | 131735       | 11,6%  | 2334  | 1,5%         | 1056  | -61,9%       |
| SHANNON       | SNN   | 125358       | -36,2% | 1753  | -23,8%       | 2051  | 30,3%        |
| LJUBLJANA     | LJU   | 121793       | -0,3%  | 2602  | -2,3%        | 609   | 4,8%         |
| OLBIA         | OLB   | 112851       | 11,7%  | 1036  | 10,3%        | 15  | -14,8%       |
| VILNIUS       | VNO   | 111813       | -5,7%  | 2027  | 10,8%        | 357   | 33,7%        |
| SALZBURG      | SZG   | 107410       | 22,3%  | 1426  | 11,9%        | 12  | -7,1%        |
| STRASBOURG    | SXB   | 104326       | 2,5%   | 2167  | -10,7%       | 17  | -22,7%       |
| DUBROVNIK     | DBV   | 103976       | 10,4%  | 1067  | 10,8%        | 36  | -9,0%        |
| UMEÅ          | UME   | 87640        | 7,0%   | 1310  | 11,2%        | 13  | -7,1%        |
| SPLIT         | SPU   | 87447        | 14,0%  | 976   | 114,5%       | 54  | -5,9%        |
| KRISTIANSAND  | KRS   | 84928        | 3,1%   | 1287  | -5,9%        | 32  | -4,9%        |
| AALESUND      | AES   | 83056        | 13,8%  | 920   | 1,0%         | 38  | -29,6%       |
| BOURNEMOUTH   | BOH   | 82362        | 16,3%  | 880   | 22,7%        | N/A   | N/A          |
| TRIESTE       | TRS   | 78097        | 26,7%  | 993   | 12,1%        | 26  | -38,1%       |
| LINZ          | LNZ   | 63728        | 18,4%  | 1301  | 10,8%        | 554   | -29,5%       |
| SKOPJE        | SKP   | 59253        | 20,0%  | 922   | 10,2%        | 193   | 24,2%        |
| PODGORICA     | TGD   | 57054        | 42,5%  | 530   | 19,6%        | 49  | -49,2%       |
| HAUGESUND     | HAU   | 56598        | 0,2%   | 624   | -5,9%        | 22  | 17,7%        |
| SARAJEVO      | SJJ   | 51137        | 9,3%   | 476   | -3,6%        | 165   | -5,2%        |
| VARNA         | VAR   | 49798        | -3,2%  | 620   | -13,9%       | 8   | 42,5%        |
| TOULON        | TLN   | 45777        | -9,1%  | 764   | -0,7%        | N/A   | N/A          |
| HUMBERSIDE    | HUY   | 27226        | -1,4%  | 1497  | -0,9%        | 93  | 24,0%        |
| LIEGE         | LGG   | 18368        | -12,3% | 2466  | 1,5%         | 56857   | 19,2%        |

| Airport           |     | Passengers   |       | Commercial movements   |       | Freight  |        |
|-------------------|-----|--|-------|--|-------|--|--------|
|                   |     |  January - October 2010 |       |  January - October 2010 |       |  January - October 2010 |        |
| London            | LHR | 55825962   | 0,3%  | 378735   | -1,9% | 1236210  | 19,5%  |
| Paris             | CDG | 49422146   | 0,4%  | 414795   | -5,4% | N/A  | N/A    |
| Frankfurt         | FRA | 45100780   | 4,4%  | 382081   | 0,6%  | 1826012  | 25,8%  |
| Madrid            | MAD | 42299823   | 3,3%  | 363713   | -0,1% | 301250   | 25,8%  |
| Amsterdam         | AMS | 38454667   | 3,1%  | 326401   | -2,1% | 1249588  | 20,4%  |
| Rome              | FCO | 30901575   | 7,5%  | 272977   | 1,2%  | 128069   | 25,4%  |
| Munich            | MUC | 29347452   | 5,8%  | 309946   | -2,9% | 226125   | 28,9%  |
| London            | LGW | 27356481   | -3,0% | 201435   | -4,5% | 87695  | 49,6%  |
| Istanbul          | IST | 27278767   | 7,9%  | 230213   | 3,0%  | 375705   | 26,1%  |
| Barcelona         | BCN | 24802640   | 6,2%  | 230852   | -1,8% | 86652  | 19,2%  |
| Paris             | ORY | 21306195   | 0,1%  | 181161   | -2,7% | N/A  | N/A    |
| Antalya           | AYT | 20499407   | 19,5% | 132265   | 17,7% | 7139   | 36,0%  |
| Zurich            | ZRH | 19331694   | 4,7%  | 191510   | 2,2%  | 247467   | 19,5%  |
| Moscow            | DME | 18930037   | 20,4% | 176373   | 16,4% | 112211   | 24,1%  |
| Palma De Mallorca | PMI | 18885524   | 0,2%  | 148458   | -8,6% | 14857  | 1,6%   |
| Copenhagen        | CPH | 18260672   | 8,7%  | 201798   | 4,0%  | N/A  | N/A    |
| Vienna            | VIE | 16698648   | 8,6%  | 205799   | 1,4%  | 182544   | 24,8%  |
| Moscow            | SVO | 16452632   | 32,1% | 150297   | 16,1% | 102830   | 24,4%  |
| Düsseldorf        | DUS | 16268251   | 6,6%  | 173141   | 0,9%  | 74455  | 40,9%  |
| Milan             | MXP | 16175776   | 7,7%  | 160040   | 3,2%  | 345798   | 29,8%  |
| London            | STN | 16141351   | -6,6% | 123644   | -7,8% | 169120   | 12,8%  |
| Oslo              | OSL | 16125274   | 5,0%  | 177830   | 0,2%  | 38591  | -8,3%  |
| Manchester        | MAN | 15590039   | -6,1% | 127841   | -9,6% | 95823  | 15,0%  |
| Brussels          | BRU | 14653727   | 0,4%  | 173323   | -4,3% | 358885   | 7,7%   |
| Stockholm         | ARN | 14205578   | 4,4%  | 154483   | -1,5% | N/A  | N/A    |
| Athens            | ATH | 13434142   | -3,9% | 152307   | -6,6% | 73256  | -5,7%  |
| Berlin            | TXL | 12795231   | 5,9%  | 130886   | 2,1%  | 18099  | 37,0%  |
| Lisbon            | LIS | 12048340   | 6,2%  | 116964   | 4,8%  | 77937  | 16,8%  |
| Hamburg           | HAM | 11009902   | 6,2%  | 116785   | 1,4%  | N/A  | N/A    |
| Helsinki          | HEL | 10894419   | 1,5%  | 142498   | -1,0% | 117742   | 28,1%  |
| Malaga            | AGP | 10719944   | 3,8%  | 88344  | 3,0%  | 2565   | -12,1% |
| Geneva            | GVA | 10065878   | 4,8%  | 105213   | -0,2% | 31686  | 32,1%  |
| Prague            | PRG | 10021110   | 0,4%  | 130663   | -4,6% | 42472  | 44,6%  |
| Istanbul          | SAW | 9690399  | 85,2% | 81979  | 83,6% | 18521  | 93,2%  |
| Cologne           | CGN | 8565724  | 2,0%  | 103369   | 1,0%  | 523080   | 16,1%  |
| Nice              | NCE | 8390044  | -2,9% | 102092   | -2,0% | 12741  | 39,2%  |
| Alicante          | ALC | 8319157  | 3,5%  | 64422  | 2,0%  | 2624   | -1,6%  |
| Moscow            | VKO | 8163141  | 24,4% | 89997  | 13,2% | 30232  | 37,8%  |
| Stuttgart         | STR | 7950580  | 2,7%  | 90868  | -4,6% | 16783  | 18,0%  |
| Gran Canaria      | LPA | 7720897  | 3,8%  | 80272  | 2,8%  | 19913  | -5,8%  |
| Birmingham        | BHX | 7539011  | -5,6% | 75187  | -8,2% | 18903  | 82,9%  |
| Edinburgh         | EDI | 7503214  | -4,1% | 87542  | -4,6% | 17657  | -11,7% |
| Warsaw            | WAW | 7490135  | 4,5%  | 102935   | 1,1%  | 33354  | 23,0%  |
| Budapest          | BUD | 7026884  | 1,0%  | 85227  | -4,6% | 49778  | 23,0%  |
| Milan             | LIN | 6962980  | -1,8% | 76942  | -3,2% | 13025  | 13,2%  |
| Milan             | BGY | 6557931  | 7,8%  | 54645  | 4,8%  | 86345  | 5,4%   |
| Berlin            | SXF | 6290704  | 7,6%  | 54922  | 5,6%  | 3994   | 23,3%  |
| Tenerife          | TFS | 6026372  | 3,1%  | 40555  | 4,5%  | 3551   | -23,5% |
| Glasgow           | GLA | 5704469  | -9,6% | 59386  | -7,0% | 3061   | 31,0%  |
| Faro              | FAO | 4981264  | 6,2%  | 36455  | 7,3%  | 265  | -53,4% |
| Charleroi         | CRL | 4891663  | 31,6% | 34693  | 32,4% | 2  | 614,3% |
| Naples            | NAP | 4838348  | 4,6%  | 47836  | -0,8% | 796  | -11,7% |
| Ibiza             | IBZ | 4805853  | 10,6% | 47919  | 8,1%  | 2858   | 3,0%   |
| Bologna           | BLQ | 4673181  | 14,8% | 54324  | 7,1%  | 21927  | 7,6%   |
| East Midlands     | EMA | 4474782  | -4,3% | 56156  | -4,0% | 227920   | 8,1%   |
| Porto             | OPO | 4459288  | 17,3% | 46199  | 5,3%  | 24032  | 8,8%   |
| Girona            | GRO | 4447119  | -4,0% | 32435  | -3,6% | 39   | -11,5% |
| Hanover           | HAJ | 4381772  | 1,1%  | 49431  | -5,6% | 4236   | 49,4%  |
| Valencia          | VLC | 4212435  | 2,7%  | 53555  | -3,4% | 9464   | 19,3%  |
| Lanzarote         | ACE | 4181587  | 6,9%  | 37427  | 11,2% | 3195   | -9,3%  |
| Bergen            | BGO | 4090354  | 4,4%  | 59553  | 2,4%  | 2262   | 1,0%   |
| Riga              | RIX | 4017283  | 16,7% | 55547  | 12,8% | 5816   | 43,0%  |
| Bilbao            | BIO | 3840709  | 8,6%  | 47057  | 4,3%  | 13645  | 26,2%  |
| Rome              | CIA | 3793908  | -5,9% | 26872  | -6,9% | 14543  | 4,4%   |
| Sevilla           | SVQ | 3540168  | 2,5%  | 35599  | -0,9% | 4641   | 11,5%  |
| Basel             | BSL | 3517637  | 5,9%  | 47436  | 3,1%  | 35254  | 41,1%  |
| Fuerteventura     | FUE | 3488813  | 11,4% | 31573  | 8,7%  | 1409   | -12,6% |
| Gothenburg        | GOT | 3479678  | 11,3% | 48871  | 6,2%  | N/A  | N/A    |

| Airport      | Passengers  |                           | Commercial movements  |                           | Freight   |                           |        |
|--------------|---|---------------------------|---|---------------------------|---|---------------------------|--------|
|              |  | January -<br>October 2010 |  | January -<br>October 2010 |  | January -<br>October 2010 |        |
| Tenerife     | TFN   | 3419195                   | 0,8%  | 47486                     | -0,9%   | 12904                     | -15,8% |
| Bordeaux     | BOD   | 3118783                   | 9,7%  | 39375                     | 1,1%  | 5471                      | 6,2%   |
| Turin        | TRN   | 3083315                   | 10,4%   | 37374                     | -4,3%   | 1021                      | -7,6%  |
| Hahn         | HHN   | 3082385                   | -8,0%   | 31915                     | -4,6%   | 129850                    | 63,4%  |
| Trondheim    | TRD   | 2945295                   | 2,3%  | 40236                     | 1,6%  | 1391                      | -7,8%  |
| Malta        | MLA   | 2926544                   | 13,0%   | 26137                     | 7,2%  | 12505                     | -3,6%  |
| Stavanger    | SVG   | 2893417                   | 0,5%  | 40820                     | -4,7%   | 2317                      | -7,6%  |
| Bari         | BRI   | 2877926                   | 19,1%   | 27557                     | 11,8%   | 171                       | -26,9% |
| Sofia        | SOF   | 2815085                   | 5,3%  | 34390                     | 1,4%  | 10761                     | -0,8%  |
| Cagliari     | CAG   | 2682581                   | 3,1%  | 25648                     | -4,2%   | 1379                      | -5,6%  |
| Menorca      | MAH   | 2370324                   | 3,8%  | 24833                     | 2,2%  | 2108                      | -8,0%  |
| Aberdeen     | ABZ   | 2353659                   | -7,9%   | 76427                     | -6,7%   | 4320                      | 2,0%   |
| Stockholm    | BMA   | 1692806                   | 3,3%  | 33764                     | 2,7%  | N/A                       | N/A    |
| Southampton  | SOU   | 1602413                   | -1,0%   | 36071                     | 2,5%  | 146                       | -36,1% |
| Brindisi     | BDS   | 1568769                   | 41,3%   | 14615                     | 25,1%   | 898                       | 32,1%  |
| Tromsø       | TOS   | 1397446                   | 1,0%  | 25827                     | 2,9%  | 1642                      | -7,4%  |
| Luxembourg   | LUX   | 1396993                   | 5,0%  | 39709                     | 1,1%  | 582879                    | 15,6%  |
| Bodo         | BOO   | 1364534                   | 4,0%  | 30210                     | 0,5%  | 929                       | -19,6% |
| Malmo        | MMX   | 1358528                   | 3,1%  | 18688                     | 0,7%  | N/A                       | N/A    |
| Reus         | REU   | 1353047                   | -16,6%  | 9807                      | -15,3%  | N/A                       | N/A    |
| Vilnius      | VNO   | 1222818                   | 9,0%  | 21124                     | 20,1%   | 2977                      | 33,1%  |
| Dubrovnik    | DBV   | 1216506                   | 12,8%   | 11587                     | 12,5%   | 351                       | -21,8% |
| Kristiansand | KRS   | 894902                    | -1,5%   | 16237                     | -7,2%   | 1205                      | 29,1%  |
| Aalesund     | AES   | 699048                    | 7,5%  | 8570                      | 1,2%  | 386                       | -38,8% |
| Haugesund    | HAU   | 468770                    | 5,7%  | 5592                      | 6,9%  | 218                       | -16,3% |
| Liege        | LGG   | 278979                    | -14,8%  | 24106                     | 10,6%   | 528924                    | 41,4%  |

----- Preliminary traffic figures -----

**Total commercial passengers**

**International passengers** (enplaned + deplaned) + **domestic passengers** (enplaned + deplaned) + **direct transit passengers** (passengers who arrive at and depart from the airport on a flight bearing the same number. They are counted only ONCE).

**Commercial movements**

Landing or take off of an aircraft operating a scheduled or non scheduled commercial service.

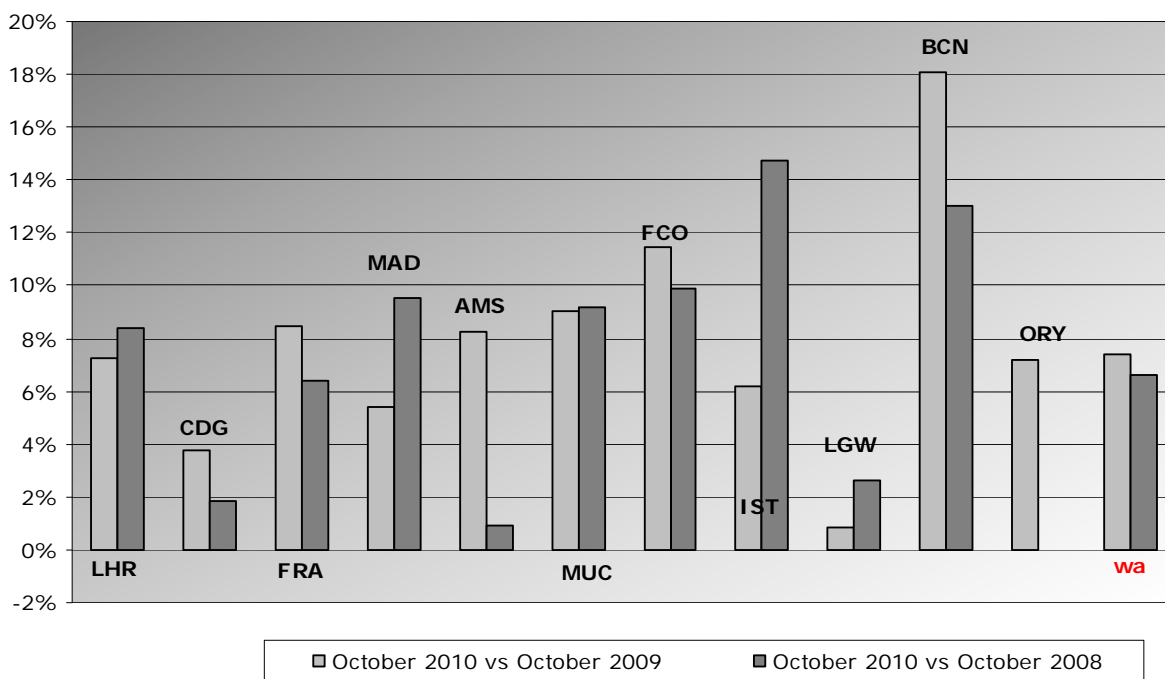
**Freight**

Freight loaded and unloaded (arriving or departing) at the airport. Freight comprises goods, newspapers, diplomatic bags, parcel post and express parcel.

**Group 1**  
**Airports welcoming more than 25 million passengers per year**  
**(percentage traffic variation October 2010 versus 2009 and 2008)**

| Airport    | 2010v2009 variation % | 2010v2008 variation % |
|------------|-----------------------|-----------------------|
| LHR        | 7,2%                  | 8,4%                  |
| CDG        | 3,8%                  | 1,8%                  |
| FRA        | 8,5%                  | 6,4%                  |
| MAD        | 5,4%                  | 9,5%                  |
| AMS        | 8,2%                  | 0,9%                  |
| MUC        | 9,1%                  | 9,1%                  |
| FCO        | 11,5%                 | 9,9%                  |
| IST        | 6,2%                  | 14,7%                 |
| LGW        | 0,8%                  | 2,6%                  |
| BCN        | 18,1%                 | 13,0%                 |
| ORY        | 7,2%                  | 0,0%                  |
| <b>wa*</b> | <b>7,4%</b>           | <b>6,6%</b>           |

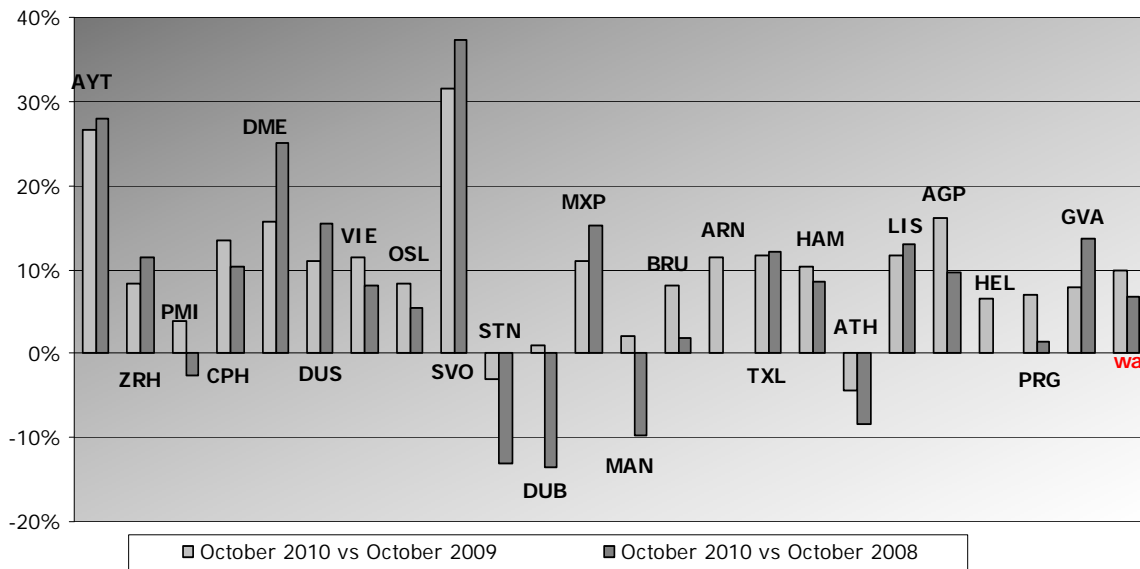
\*weighted average=SUM(%change\*pax)/SUM(pax)



**Group 2**  
**Airports welcoming between 10 and 25 million passengers**  
**per year (percentage traffic variation October 2010 versus 2009 and 2008)**

| Airport    | 2010v2009 variation % | 2010v2008 variation % |
|------------|-----------------------|-----------------------|
| AYT        | 26,6%                 | 27,9%                 |
| ZRH        | 8,2%                  | 11,5%                 |
| PMI        | 3,8%                  | -2,7%                 |
| CPH        | 13,4%                 | 10,3%                 |
| DME        | 15,7%                 | 25,1%                 |
| DUS        | 11,0%                 | 15,5%                 |
| VIE        | 11,4%                 | 8,2%                  |
| OSL        | 8,4%                  | 5,5%                  |
| SVO        | 31,5%                 | 37,3%                 |
| STN        | -3,1%                 | -13,0%                |
| DUB        | 1,0%                  | -13,5%                |
| MXP        | 11,0%                 | 15,2%                 |
| MAN        | 2,0%                  | -9,7%                 |
| BRU        | 8,0%                  | 1,9%                  |
| ARN        | 11,4%                 | 0,1%                  |
| TXL        | 11,6%                 | 12,2%                 |
| HAM        | 10,4%                 | 8,5%                  |
| ATH        | -4,4%                 | -8,4%                 |
| LIS        | 11,6%                 | 13,1%                 |
| AGP        | 16,0%                 | 9,7%                  |
| HEL        | 6,4%                  | 0,2%                  |
| PRG        | 7,0%                  | 1,5%                  |
| GVA        | 7,9%                  | 13,7%                 |
| <b>wa*</b> | <b>9,8%</b>           | <b>6,7%</b>           |

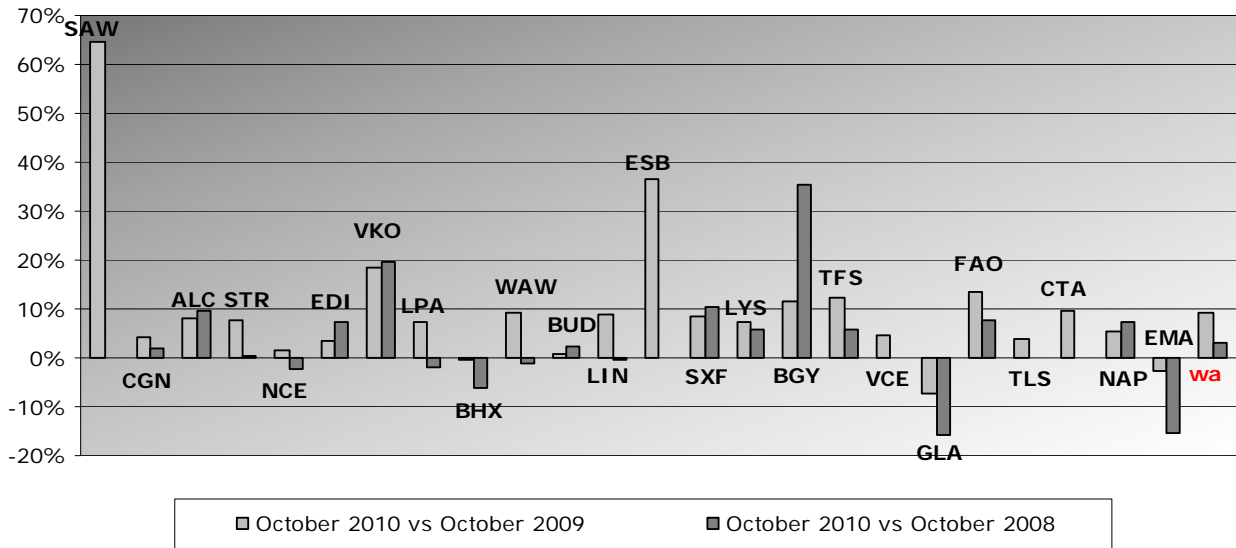
\*weighted average = SUM(%change \* pax) / SUM(pax)



**Group 3**  
**Airports welcoming between 5 and 10 million passengers**  
**per year (percentage traffic variation October 2010 versus 2009 and 2008)**

| Airport    | 2010v2009 variation % | 2010v2008 variation % |
|------------|-----------------------|-----------------------|
| SAW        | 64,7%                 | N/A                   |
| CGN        | 4,3%                  | 2,0%                  |
| ALC        | 8,0%                  | 9,5%                  |
| STR        | 7,8%                  | 0,5%                  |
| NCE        | 1,6%                  | -2,3%                 |
| EDI        | 3,4%                  | 7,4%                  |
| VKO        | 18,5%                 | 19,6%                 |
| LPA        | 7,3%                  | -2,0%                 |
| BHX        | -0,3%                 | -6,0%                 |
| WAW        | 9,1%                  | -1,0%                 |
| BUD        | 0,9%                  | 2,4%                  |
| LIN        | 8,7%                  | -0,5%                 |
| ESB        | 36,6%                 | N/A                   |
| SXF        | 8,6%                  | 10,4%                 |
| LYS        | 7,4%                  | 5,8%                  |
| BGY        | 11,4%                 | 35,4%                 |
| TFS        | 12,3%                 | 5,8%                  |
| VCE        | 4,6%                  | N/A                   |
| GLA        | -7,2%                 | -15,8%                |
| FAO        | 13,5%                 | 7,7%                  |
| TLS        | 3,7%                  | N/A                   |
| CTA        | 9,8%                  | N/A                   |
| NAP        | 5,5%                  | 7,2%                  |
| EMA        | -2,5%                 | -15,5%                |
| <b>wa*</b> | <b>9,3%</b>           | <b>3,0%</b>           |

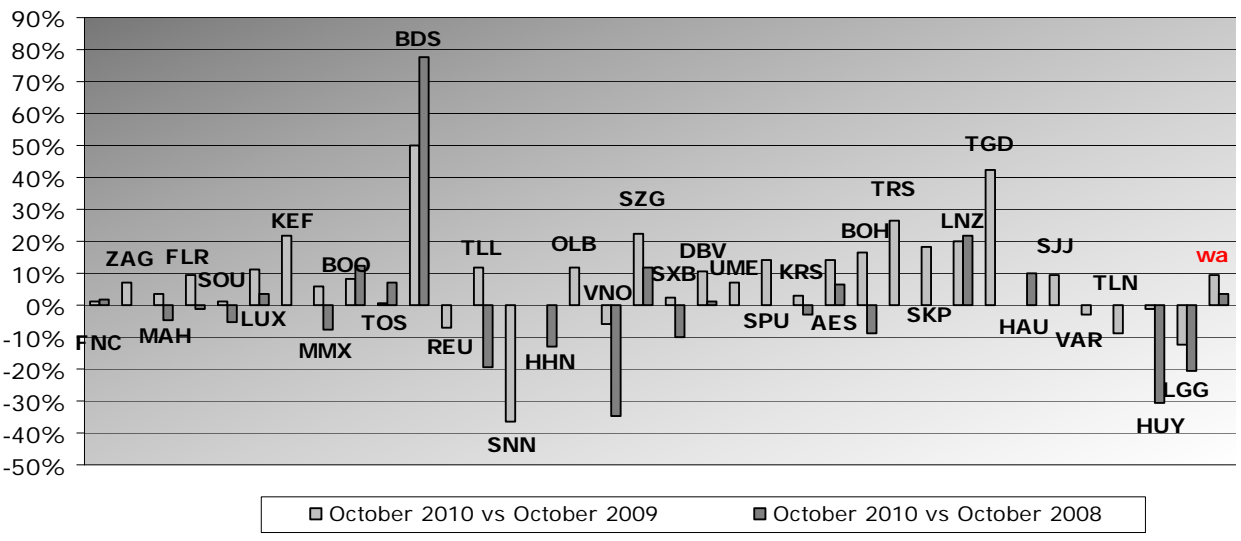
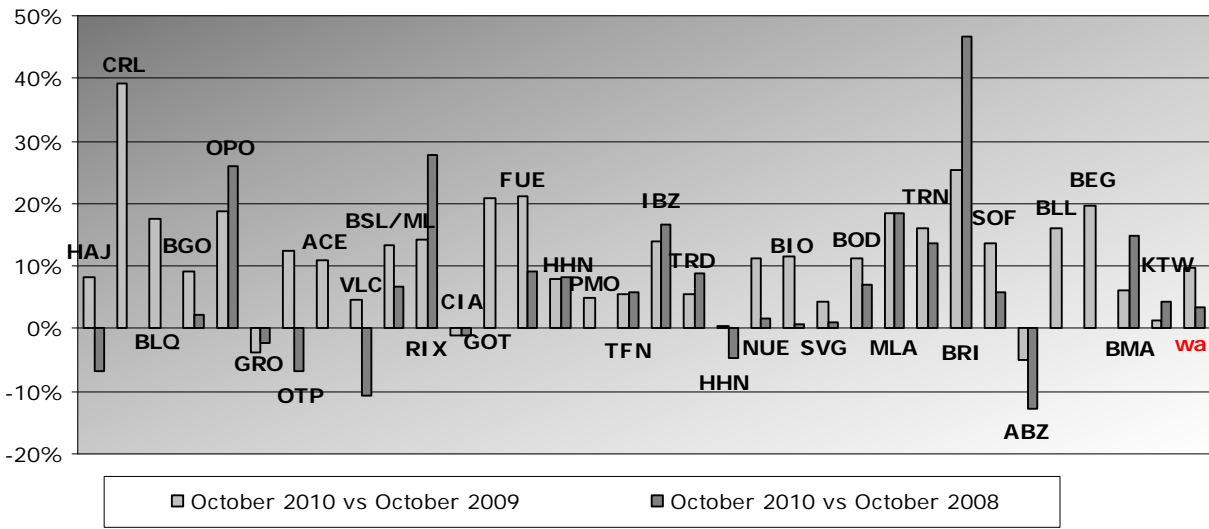
\*weighted average =  $\text{SUM}(\% \text{change} * \text{pax}) / \text{SUM}(\text{pax})$



**Group 4**  
**Airports welcoming less than 5 million passengers**  
**per year (percentage traffic variation October 2010 versus 2009 and 2008)**

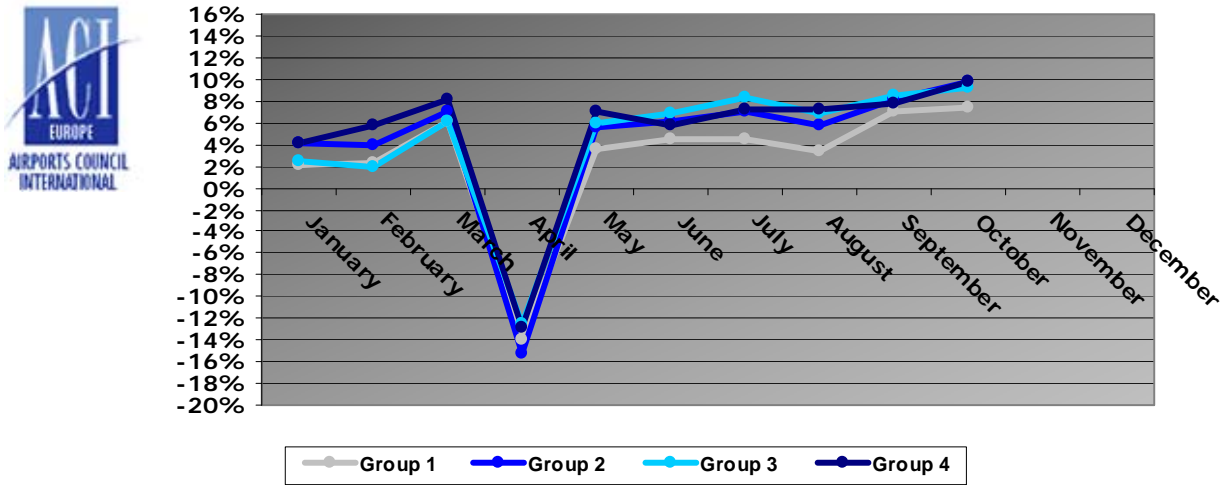
| <b>Airport</b> | <b>2010v2009 variation %</b> | <b>2010v2008 variation %</b> |
|----------------|------------------------------|------------------------------|
| HAJ            | 8,3%                         | -6,8%                        |
| CRL            | 39,1%                        | N/A                          |
| BLQ            | 17,5%                        | N/A                          |
| BGO            | 9,1%                         | 2,2%                         |
| OPO            | 18,6%                        | 26,0%                        |
| GRO            | -3,6%                        | -2,2%                        |
| OTP            | 12,5%                        | -6,8%                        |
| ACE            | 11,0%                        | N/A                          |
| VLC            | 4,7%                         | -10,8%                       |
| BSL/ML         | 13,5%                        | 6,6%                         |
| RIX            | 14,3%                        | 27,8%                        |
| CIA            | -1,1%                        | -1,0%                        |
| GOT            | 20,7%                        | N/A                          |
| FUE            | 21,1%                        | 9,1%                         |
| SVQ            | 7,8%                         | 8,2%                         |
| PMO            | 4,8%                         | N/A                          |
| TFN            | 5,5%                         | 6,0%                         |
| IBZ            | 14,0%                        | 16,8%                        |
| TRD            | 5,5%                         | 8,8%                         |
| HHN            | 0,4%                         | -4,6%                        |
| NUE            | 11,2%                        | 1,5%                         |
| BIO            | 11,6%                        | 0,8%                         |
| SVG            | 4,5%                         | 0,9%                         |
| BOD            | 11,3%                        | 7,0%                         |
| MLA            | 18,4%                        | 18,4%                        |
| TRN            | 16,0%                        | 13,6%                        |
| BRI            | 25,3%                        | 46,7%                        |
| SOF            | 13,6%                        | 5,9%                         |
| ABZ            | -5,0%                        | -12,9%                       |
| BLL            | 16,0%                        | N/A                          |
| BEG            | 19,6%                        | N/A                          |
| BMA            | 6,2%                         | 14,9%                        |
| KTW            | 1,4%                         | 4,4%                         |
| FNC            | 1,0%                         | 1,8%                         |
| ZAG            | 7,3%                         | N/A                          |
| MAH            | 3,3%                         | -5,0%                        |
| FLR            | 9,6%                         | -1,5%                        |
| SOU            | 1,0%                         | -5,4%                        |
| LUX            | 11,0%                        | 3,7%                         |
| KEF            | 21,8%                        | N/A                          |
| MMX            | 6,0%                         | -7,5%                        |
| BOO            | 8,3%                         | 12,3%                        |
| TOS            | 0,9%                         | 7,0%                         |
| BDS            | 50,2%                        | 77,8%                        |
| REU            | -7,1%                        | N/A                          |
| TLL            | 11,6%                        | -19,4%                       |
| SNN            | -36,2%                       | N/A                          |
| LJU            | -0,3%                        | -12,8%                       |
| OLB            | 11,7%                        | N/A                          |
| VNO            | -5,7%                        | -34,7%                       |
| SZG            | 22,3%                        | 11,7%                        |
| SXB            | 2,5%                         | -9,9%                        |
| DBV            | 10,4%                        | 1,1%                         |
| UME            | 7,0%                         | N/A                          |
| SPU            | 14,0%                        | N/A                          |
| KRS            | 3,1%                         | -2,8%                        |
| AES            | 13,8%                        | 6,2%                         |
| BOH            | 16,3%                        | -8,8%                        |
| TRS            | 26,7%                        | N/A                          |
| LNZ            | 18,4%                        | N/A                          |
| SKP            | 20,0%                        | 21,9%                        |
| TGD            | 42,5%                        | N/A                          |
| HAU            | 0,2%                         | 10,0%                        |
| SJJ            | 9,3%                         | N/A                          |
| VAR            | -3,2%                        | N/A                          |
| TLN            | -9,1%                        | N/A                          |
| HUY            | -1,4%                        | -30,4%                       |
| LGG            | -12,3%                       | -20,7%                       |
| <b>wa*</b>     | <b>7,8%</b>                  | <b>3,3%</b>                  |

\*weighted average=SUM(%change\*pax)/SUM(pax)



## Year-to-date airport passenger trends

The graphic illustrates and compares the trends of the different airport Groups 1, 2, 3 and 4 for 2010.



The graphic compares the amount of total commercial passengers 2010 with 2009. The airports included, in this graphic, are: LHR, FRA, CDG, AMS, MAD, IST, LGW, FCO, MUC, BCN, ORY, STN, MAN, MXP, ZRH, CPH, ARN, DUB, OSL, BRU, VIE, DUS, ATH, PMI, AGP, DME, HEL, TXL, LIS, HAM, PRG.

