



# Airport Traffic Report

## September 2010

## European passenger traffic up 7.8% during September 2010

The '**ACI EUROPE Airport Traffic Report - September 2010**' includes **125 airports** in total.




The overall **passenger** traffic at European airports increased by **7.8%** in **September 2010** compared with September 2009. The overall **freight** traffic among European airports increased **17.7%** in September 2010 when compared with the corresponding month in 2009. The overall figure for **movements** at European airports increased **3.3%** in September 2010 when compared with September 2009.




The accumulated figure for **passenger** traffic **January to September 2010** increase by **4.1%** compared with the corresponding period 2009. The accumulated figure for **freight** traffic during **January to September** increased by **22.8%** and **movements** increased by **0.2%** during the corresponding period when compared with 2009.




Airports welcoming more than 25 million passengers per year (Group 1), airports welcoming between 10 and 25 million passengers (Group 2), airports welcoming between 5 and 10 million passengers (Group 3) and airports welcoming less than 5 million passengers per year (Group 4) reported an average increase/decrease of **7.1%**, **8.2%**, **8.5%** and **7.8%** respectively when compared with September 2009. The same comparison of September 2010 with September 2008 demonstrates an average increase/decrease of **4.5%**, **2.5%**, **1.1%** and **3.3%** respectively.




Examples of airports that experienced the highest increase in passenger traffic per group, when comparing September 2010 with September 2009, include:

- **Group 1 airports** – Barcelona (+**12.9%**), Munich (+**11.1%**), Frankfurt (+**10.4%**) and Rome FCO (+**10.0%**)
- **Group 2 airports** – Moscow SVO (+**31.8%**), Stockholm Arlanda (+**14.2%**), Vienna (+**13.8%**) and Antalya (+**13.4%**)
- **Group 3 airports** – Istanbul SAW (+**81.6%**), Ankara (+**37.1%**), Moscow VKO (+**17.6%**) and Faro (+**11.7%**)
- **Group 4 airports** – Brindisi (+**63.3%**), Podgorica (+**58.0%**), Charleroi (+**35.9%**), and Bari (+**23.4%**).

Airport	Passengers		Commercial movements		Freight		
	 September 2010		 September 2010		 September 2010		
LONDON	LHR	6232744	7,6%	40002	5,6%	123680	12,2%
PARIS	CDG	5300544	5,1%	42909	-2,0%	192120	27,2%
FRANKFURT	FRA	5087585	10,4%	40640	4,2%	183331	15,6%
MADRID	MAD	4459730	4,6%	36571	-1,0%	29150	14,5%
AMSTERDAM	AMS	4252037	5,8%	34583	1,2%	131159	19,7%
MUNICH	MUC	3486425	11,1%	34005	2,0%	25054	32,9%
ROME	FCO	3469602	10,0%	29198	4,8%	12621	17,5%
LONDON	LGW	3209516	-2,6%	22428	-4,8%	8220	37,9%
ISTANBUL	IST	2953995	9,7%	23916	3,2%	35194	8,0%
ANTALYA	AYT	2932773	13,4%	17920	11,9%	456	-35,0%
BARCELONA	BCN	2836908	12,9%	24968	5,7%	8255	-7,8%
PALMA DE MALLORCA	PMI	2631164	4,8%	19053	1,1%	1655	3,4%
MOSCOW	DME	2199956	12,3%	19720	13,8%	13260	13,4%
PARIS	ORY	2169181	5,3%	19144	0,5%	8200	3,8%
ZURICH	ZRH	2135766	8,1%	20186	4,3%	22926	12,1%
COPENHAGEN	CPH	2014662	12,3%	21923	7,3%	N/A	N/A
DÜSSELDORF	DUS	1967266	11,9%	19281	3,1%	8904	38,2%
MOSCOW	SVO	1948108	31,8%	16515	19,9%	11411	17,1%
VIENNA	VIE	1947200	13,8%	21742	3,9%	17812	9,1%
MANCHESTER	MAN	1932253	-1,6%	14647	-4,5%	9328	7,4%
OSLO	OSL	1835204	9,6%	20140	2,6%	3958	-8,7%
MILAN	MXP	1807144	11,6%	17338	6,9%	35074	27,9%
LONDON	STN	1776410	-4,3%	13167	-8,4%	18246	12,3%
DUBLIN	DUB	1760393	-1,5%	13788	-2,4%	8682	6,2%
BRUSSELS	BRU	1686743	4,0%	18583	-3,2%	33985	8,9%
STOCKHOLM	ARN	1648654	14,2%	18194	5,8%	7944	53,7%
BERLIN	TXL	1522650	12,7%	14393	6,3%	2029	48,9%
ATHENS	ATH	1506200	-8,4%	15656	-11,9%	7598	-8,9%
LISBON	LIS	1366215	11,3%	12280	9,3%	7403	-2,2%
MALAGA	AGP	1303669	8,6%	9995	6,4%	266	-2,2%
HAMBURG	HAM	1286976	11,5%	12787	2,0%	N/A	N/A
PRAGUE	PRG	1219848	3,0%	14376	-1,0%	4795	39,1%
HELSINKI	HEL	1174966	6,8%	15812	2,1%	11779	8,6%
ISTANBUL	SAW	1123665	81,6%	9361	76,5%	2327	128,8%
COLOGNE	CGN	1046855	7,3%	11624	4,5%	59890	20,4%
STUTT GART	STR	1001692	10,6%	10200	0,0%	1637	2,4%
ALICANTE	ALC	975048	2,2%	7102	-1,8%	260	-7,1%
MOSCOW	VKO	961590	17,6%	10078	12,6%	3711	43,4%
GENEVA	GVA	958781	9,0%	10308	3,8%	3247	30,6%
NICE	NCE	949052	0,3%	11265	1,2%	1338	17,9%
BIRMINGHAM	BHX	917860	-2,1%	8391	-5,9%	2109	58,5%
EDINBURGH	EDI	873300	2,2%	9604	1,2%	1618	-18,7%
BUDAPEST	BUD	847005	2,0%	9551	-2,0%	5371	14,7%
WARSAW	WAW	843429	-1,2%	10310	-6,0%	3573	12,1%
MILAN	LIN	822942	5,1%	8182	0,9%	1505	26,2%
IBIZA	IBZ	752034	14,5%	6661	11,8%	310	-9,4%
LYON	LYS	719358	7,8%	10417	-3,0%	2742	9,3%
VENICE	VCE	708170	4,6%	6656	5,7%	3418	20,3%
ANKARA	ESB	707919	37,1%	5703	33,9%	1002	-10,1%
MILAN	BGY	702894	7,9%	5835	7,3%	9016	3,1%
BERLIN	SXF	700446	9,6%	5785	6,5%	467	20,4%
FARO	FAO	700101	11,7%	4646	11,0%	31	-1,1%
GRAN CANARIA	LPA	689076	7,8%	7325	4,2%	1889	-15,7%
GLASGOW	GLA	677955	-5,5%	6569	-1,4%	380	7,6%
MARSEILLE	MRS	676547	7,0%	8534	0,0%	4343	2,1%
CATANIA	CTA	655919	9,7%	5430	4,8%	788	29,6%
NAPLES	NAP	580385	5,9%	5389	3,7%	81	-34,0%
TOULOUSE	TLS	569796	3,5%	7121	2,3%	4520	-1,5%
BOLOGNA	BLQ	550613	16,5%	5825	3,6%	2496	-1,7%
HANOVER	HAJ	542636	10,3%	5564	0,1%	725	177,8%
TENERIFE	TFS	527397	5,0%	3444	3,9%	351	-21,6%
PORTO	OPO	509785	20,3%	4915	10,4%	2309	1,3%
BUCHAREST	OTP	504984	10,9%	6800	11,3%	1699	1,9%
CHARLEROI	CRL	490641	35,9%	3165	33,2%	1	4733,3%
GIRONA	GRO	482060	-10,9%	3335	-10,4%	3	235,1%
BERGEN	BGO	473814	13,8%	6928	8,4%	242	-3,0%
VALENCIA	VLC	463594	3,6%	5591	-1,1%	1025	16,5%
EAST MIDLANDS	EMA	459629	-1,7%	5578	-0,9%	25465	13,4%

Airport	Passengers		Commercial movements		Freight		
	 September 2010		 September 2010		 September 2010		
RIGA	RIX	454045	17,4%	6054	14,6%	691	45,8%
LANZAROTE	ACE	431873	12,3%	3798	17,5%	358	14,3%
BASEL	BSL	424101	12,0%	5024	4,7%	3883	35,2%
PALERMO	PMO	421102	-2,7%	4005	-5,6%	86	-17,3%
GOTHENBURG	GOT	415580	17,9%	5876	10,4%	4505	8,6%
ROME	CIA	401417	-5,0%	2760	-6,6%	1563	5,5%
MALTA	MLA	375259	15,3%	3153	6,6%	1101	-21,6%
FUERTEVENTURA	FUE	369197	19,6%	3248	15,7%	134	-15,5%
SEVILLA	SVQ	364202	-0,3%	3489	-2,9%	517	28,5%
BILBAO	BIO	361127	7,9%	4130	2,5%	227	-7,4%
MENORCA	MAH	354481	7,7%	3164	0,8%	243	-7,5%
CAGLIARI	CAG	353816	1,2%	3161	-6,9%	170	-15,8%
BORDEAUX	BOD	347498	12,2%	4270	2,8%	619	-0,7%
TENERIFE	TFN	342899	0,8%	4648	-1,3%	1361	-22,5%
TRONDHEIM	TRD	339189	10,4%	4762	7,7%	165	7,2%
STAVANGER	SVG	335045	6,8%	4780	1,4%	271	-18,2%
BARI	BRI	330732	23,4%	2994	22,6%	17	-26,9%
TURIN	TRN	321454	18,0%	3930	6,9%	207	86,9%
HAHN	HHN	318475	-15,1%	2974	-12,1%	14668	69,0%
SOFIA	SOF	310121	9,6%	3619	7,2%	1084	11,5%
BELGRADE	BEG	274486	19,1%	3728	11,2%	581	61,4%
ABERDEEN	ABZ	268315	-5,1%	8340	-2,6%	524	29,1%
BILLUND	BLL	253248	14,4%	3488	15,1%	5820	35,1%
FUNCHAL	FNC	216899	4,3%	1911	2,9%	490	-2,5%
ZAGREB	ZAG	213917	7,7%	3168	2,6%	559	-29,7%
STOCKHOLM	BMA	213396	5,1%	4335	3,8%	23	4,5%
OLBIA	OLB	202533	-0,2%	1937	3,3%	24	-18,2%
DUBROVNIK	DBV	189515	17,1%	1674	17,1%	40	-19,9%
REUS	REU	186003	-19,5%	1269	-15,1%	N/A	N/A
VARNA	VAR	176404	-0,1%	1588	1,4%	9	-16,3%
FLORENCE	FLR	174879	6,1%	2194	1,9%	18	-17,8%
SOUTHAMPTON	SOU	174648	0,1%	3903	5,1%	22	15,8%
SPLIT	SPU	173259	15,4%	1684	136,8%	65	-13,7%
MALMO	MMX	168802	5,4%	2286	-0,2%	2736	16,8%
BRINDISI	BDS	165327	63,3%	1352	58,7%	6	-87,4%
LUXEMBOURG	LUX	161913	10,5%	4159	4,3%	57812	12,1%
TROMSOE	TOS	151567	7,0%	2795	4,8%	157	-9,5%
BODO	BOO	146652	9,9%	3304	2,5%	96	-15,5%
TALLINN	TLL	134920	13,7%	2527	11,9%	1171	-34,1%
SALZBURG	SZG	132831	11,8%	1606	12,1%	7	-53,5%
EINDHOVEN	EIN	132147	-24,7%	1818	41,5%	N/A	N/A
SHANNON	SNN	132147	-38,0%	1818	-23,8%	1794	12,5%
VILNIUS	VNO	131780	4,3%	2065	7,6%	331	30,3%
PRISTINA	PRN	116692	20,5%	540	9,5%	80	-37,3%
STRASBOURG	SXB	101510	0,7%	2278	-9,2%	12	-33,3%
BOURNEMOUTH	BOH	94938	8,6%	906	14,5%	N/A	N/A
KRISTIANSAND	KRS	87647	12,0%	1327	-5,6%	30	-7,4%
UMEÅ	UME	83969	11,2%	1302	9,9%	11	0,0%
AALESUND	AES	78906	14,7%	953	4,5%	35	-38,8%
TRIESTE	TRS	70679	2,6%	816	-9,5%	7	-63,2%
PODGORICA	TGD	67384	58,0%	573	37,1%	45	-28,6%
SKOPJE	SKP	63635	18,9%	960	11,5%	164	-2,6%
SARAJEVO	SJJ	54753	12,2%	477	-5,7%	150	-22,3%
HAUGESUND	HAU	52805	-4,8%	622	-11,6%	25	0,0%
TOULON	TLN	47822	-11,8%	961	7,6%	N/A	N/A
HUMBERSIDE	HUY	35220	-14,5%	1752	3,2%	99	86,4%
LIEGE	LGG	34099	-15,9%	2594	8,0%	52384	33,2%

Airport		Passengers		Commercial movements		Freight	
		 January - September 2010		 January - September 2010		 January - September 2010	
London	LHR	49717240	-0,5%	337994	-2,8%	1097909	20,1%
Paris	CDG	44160405	0,0%	371715	-5,7%	N/A	N/A
Frankfurt	FRA	40081513	4,0%	340713	0,2%	1622876	27,1%
Madrid	MAD	37836882	3,0%	326028	-0,2%	266200	27,8%
Amsterdam	AMS	34140179	2,5%	290948	-2,7%	1108431	21,1%
Rome	FCO	27505854	7,1%	244191	0,7%	113676	27,4%
Munich	MUC	25951338	5,4%	275582	-3,5%	199474	28,7%
London	LGW	24504891	-3,5%	180221	-4,9%	77986	52,5%
Istanbul	IST	24185874	8,0%	204257	2,9%	328808	28,1%
Barcelona	BCN	22004464	4,8%	205485	-3,0%	77449	21,3%
Paris	ORY	19149385	-0,6%	162943	-3,1%	N/A	N/A
Antalya	AYT	18026264	18,6%	116061	17,2%	6783	45,8%
Palma De Mallorca	PMI	17529730	-0,4%	139721	-1,5%	13263	2,5%
Zurich	ZRH	17097693	4,2%	170695	1,8%	222530	20,5%
Moscow	DME	16937533	21,0%	157430	16,7%	97585	25,7%
Copenhagen	CPH	16212687	8,2%	179847	3,6%	N/A	N/A
Vienna	VIE	14870444	8,3%	184126	1,1%	163033	28,5%
Moscow	SVO	14698145	32,1%	134380	15,8%	90923	26,2%
Milan	MPX	14523762	7,4%	143531	2,9%	305442	31,6%
London	STN	14420245	-7,0%	110781	-7,9%	150447	14,1%
Oslo	OSL	14304612	4,6%	158044	-0,1%	34554	-9,6%
Düsseldorf	DUS	14281858	6,0%	153758	0,5%	66480	44,7%
Manchester	MAN	13941850	-6,9%	114207	-10,4%	84920	16,5%
Brussels	BRU	13037943	-0,5%	154653	-5,0%	320810	7,3%
Stockholm	ARN	12601634	3,6%	136683	-2,3%	N/A	N/A
Athens	ATH	12121668	-3,8%	137425	-6,6%	65626	-5,9%
Berlin	TXL	11125825	5,2%	114551	1,8%	16040	36,7%
Lisbon	LIS	10755159	5,6%	104820	4,3%	69799	17,9%
Helsinki	HEL	9682696	1,0%	126489	-1,9%	103025	28,3%
Hamburg	HAM	9681044	5,7%	103898	1,6%	N/A	N/A
Malaga	AGP	9443034	2,3%	78504	2,1%	2283	-12,7%
Geneva	GVA	9056510	4,5%	94647	-0,7%	28112	34,2%
Prague	PRG	8937675	-0,4%	116908	-5,2%	37076	44,4%
Istanbul	SAW	8583397	88,8%	72535	87,5%	16340	99,3%
Cologne	CGN	7572859	1,7%	92072	0,9%	460871	15,4%
Nice	NCE	7521582	-3,4%	92150	-2,1%	11405	42,5%
Alicante	ALC	7365377	2,9%	57314	2,1%	2351	-1,2%
Moscow	VKO	7336254	25,1%	80682	13,4%	26825	38,8%
Stuttgart	STR	7012502	2,1%	80838	-5,0%	15098	22,1%
Gran Canaria	LPA	6896009	3,4%	72054	2,8%	17545	-6,3%
Birmingham	BHX	6745249	-6,2%	67145	-8,8%	16844	91,7%
Warsaw	WAW	6701536	4,0%	92006	0,6%	29647	23,6%
Edinburgh	EDI	6649705	-5,0%	77966	-5,5%	16071	-10,5%
Budapest	BUD	6253464	1,0%	76145	-5,2%	44407	23,9%
Milan	LIN	6202728	-2,9%	69033	-3,5%	11563	12,4%
Milan	BGZ	5873593	7,4%	49008	4,4%	76518	5,3%
Berlin	SXF	5455994	7,2%	47423	5,0%	3585	25,6%
Tenerife	TFS	5285314	1,8%	35688	3,9%	3120	-24,1%
Glasgow	GLA	5040185	-9,9%	52833	-7,5%	2940	38,6%
Ibiza	IBZ	4448857	10,3%	43855	7,6%	2608	3,8%
Faro	FAO	4390412	5,3%	32227	6,8%	242	-55,0%
Naples	NAP	4307897	4,5%	42726	-0,9%	711	-11,1%
Bologna	BLQ	4173638	14,5%	48712	7,3%	19543	8,3%
Porto	OPO	3998607	17,2%	41449	4,7%	21579	9,9%
Girona	GRO	3996797	-4,0%	29185	-3,4%	31	-27,8%
Charleroi	CRL	3826873	34,6%	26467	39,8%	1	4733,3%
Hanover	HAJ	3826722	0,1%	43826	-6,2%	3827	48,1%
Valencia	VLC	3781857	2,5%	47960	-3,9%	8461	20,0%
Lanzarote	ACE	3740676	6,4%	33584	10,7%	2816	-12,5%
Bergen	BGO	3615793	3,9%	52796	1,9%	2063	2,7%
Riga	RIX	3588385	17,0%	49973	13,4%	5020	38,9%
Rome	CIA	3380474	-6,5%	24020	-7,3%	12884	3,7%
East Midlands	EMA	3330181	-10,4%	44500	-8,3%	201090	8,5%
Bilbao	BIO	3241380	7,8%	39569	3,9%	7715	22,2%
Sevilla	SVQ	3161114	1,9%	31880	-1,3%	4207	12,1%
Fuerteventura	FUE	3100275	10,3%	28259	8,1%	1271	-12,8%
Basel	BSL	3087761	4,9%	42365	2,7%	31380	44,3%
Gothenburg	GOT	3067835	10,2%	43126	5,3%	N/A	N/A

Airport		Passengers		Commercial movements		Freight	
		 January - September 2010	January - September 2010	 January - September 2010	January - September 2010	 January - September 2010	January - September 2010
Tenerife	TFN	3050936	0,2%	42651	-0,7%	11315	-17,4%
Bordeaux	BOD	2785386	9,5%	35184	0,8%	4948	8,0%
Turin	TRN	2701233	9,4%	32568	-5,6%	913	-6,5%
Hahn	HHN	2700428	-9,1%	27092	-5,8%	113155	65,3%
Cagliari	CAG	2682581	3,1%	25648	-4,2%	1379	-5,6%
Malta	MLA	2593530	12,3%	23217	6,7%	11052	-3,1%
Trondheim	TRD	2588929	1,8%	35552	0,8%	1237	-8,5%
Bari	BRI	2575840	18,4%	24784	10,6%	154	-27,0%
Stavanger	SVG	2557348	0,0%	36134	-5,3%	2073	-8,0%
Sofia	SOF	2530539	4,5%	30686	0,2%	9488	-2,6%
Menorca	MAH	2198970	3,8%	22723	2,0%	1921	-7,7%
Aberdeen	ABZ	2090133	-8,2%	68502	-6,6%	3942	3,1%
Stockholm	BMA	1478087	2,8%	29469	2,0%	N/A	N/A
Southampton	SOU	1358212	-2,0%	31398	0,4%	76	-49,7%
Tromsø	TOS	1250110	1,0%	23143	3,0%	1486	-6,0%
Luxembourg	LUX	1241346	4,3%	35503	0,8%	518526	16,2%
Bodo	BOO	1213979	3,5%	26934	0,3%	824	-19,9%
Reus	REU	1208391	-17,6%	8571	-17,6%	N/A	N/A
Malmo	MMX	1205055	2,7%	16571	0,4%	N/A	N/A
Brindisi	BDS	1196381	45,2%	9983	28,9%	116	26,9%
Dubrovnik	DBV	1112530	13,0%	10520	12,6%	315	-23,1%
Vilnius	VNO	1111005	10,7%	19097	21,1%	2620	33,1%
Aalesund	AES	615992	6,7%	7650	1,2%	348	-39,6%
Kristiansand	KRS	615168	-3,0%	12988	-9,3%	239	-17,2%
Haugesund	HAU	412172	6,5%	4968	8,7%	196	-18,9%
Liege	LGG	260611	-15,0%	21640	11,7%	472067	44,7%

----- Preliminary traffic figures -----

**Total commercial passengers**

**International passengers** (enplaned + deplaned) + **domestic passengers** (enplaned + deplaned) + **direct transit passengers** (passengers who arrive at and depart from the airport on a flight bearing the same number. They are counted only ONCE).

**Commercial movements**

Landing or take off of an aircraft operating a scheduled or non scheduled commercial service.

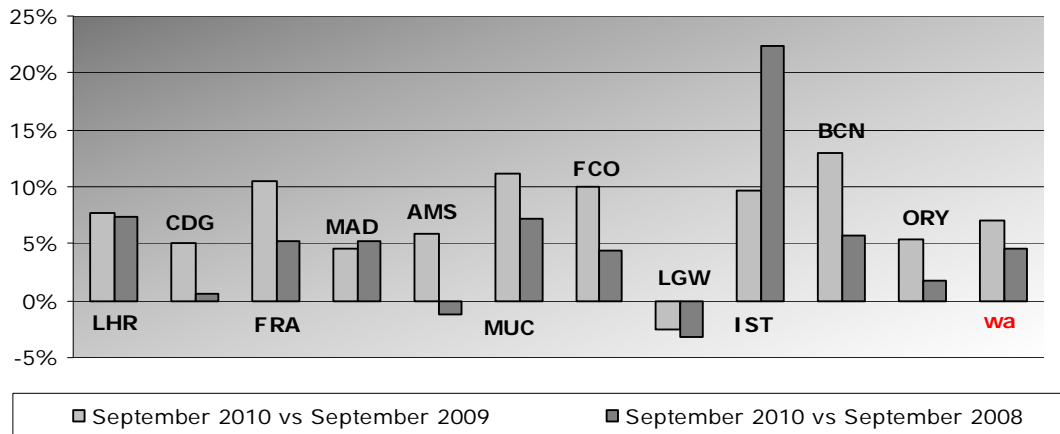
**Freight**

Freight loaded and unloaded (arriving or departing) at the airport. Freight comprises goods, newspapers, diplomatic bags, parcel post and express parcel.

**Group 1**  
**Airports welcoming more than 25 million passengers per year**  
**(percentage traffic variation September 2010 versus 2009 and 2008)**

Airport	2010v2009 variation %	2010v2008 variation %
LHR	7,6%	7,3%
CDG	5,1%	0,7%
FRA	10,4%	5,2%
MAD	4,6%	5,2%
AMS	5,8%	-1,1%
MUC	11,1%	7,1%
FCO	10,0%	4,3%
LGW	-2,6%	-3,1%
IST	9,7%	22,4%
BCN	12,9%	5,8%
ORY	5,3%	1,7%
<b>wa*</b>	<b>7,1%</b>	<b>4,5%</b>

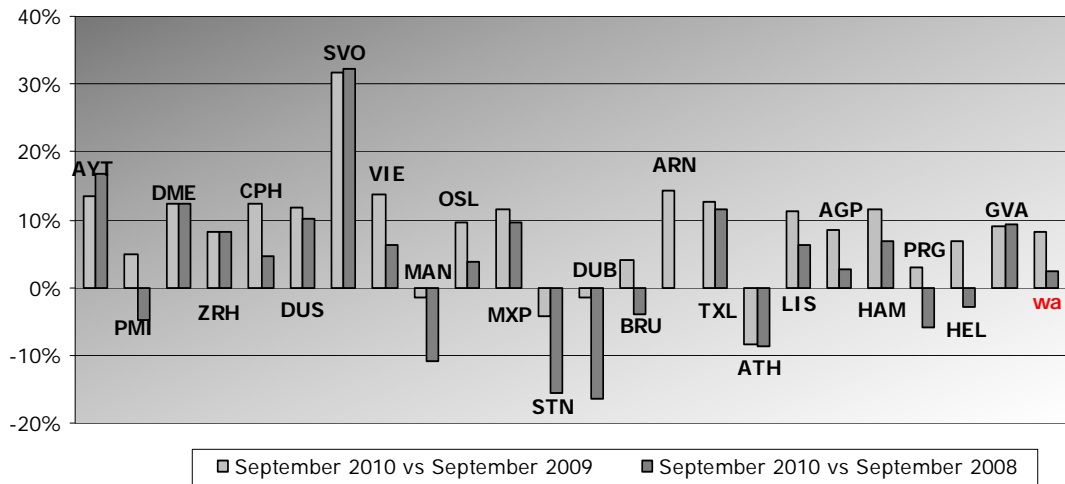
\*weighted average =  $\text{SUM}(\% \text{change} * \text{pax}) / \text{SUM}(\text{pax})$



**Group 2**  
**Airports welcoming between 10 and 25 million passengers**  
**per year (percentage traffic variation September 2010 versus 2009 and 2008)**

Airport	2010v2009 variation %	2010v2008 variation %
AYT	13,4%	16,8%
PMI	4,8%	-4,7%
DME	12,3%	12,3%
ZRH	8,1%	8,3%
CPH	12,3%	4,5%
DUS	11,9%	10,2%
SVO	31,8%	32,2%
VIE	13,8%	6,3%
MAN	-1,6%	-10,8%
OSL	9,6%	3,9%
MXP	11,6%	9,4%
STN	-4,3%	-15,4%
DUB	-1,5%	-16,3%
BRU	4,0%	-3,8%
ARN	14,2%	-0,1%
TXL	12,7%	11,6%
ATH	-8,4%	-8,5%
LIS	11,3%	6,2%
AGP	8,6%	2,7%
HAM	11,5%	6,7%
PRG	3,0%	-6,0%
HEL	6,8%	-2,8%
GVA	9,0%	9,4%
<b>wa*</b>	<b>8,2%</b>	<b>2,5%</b>

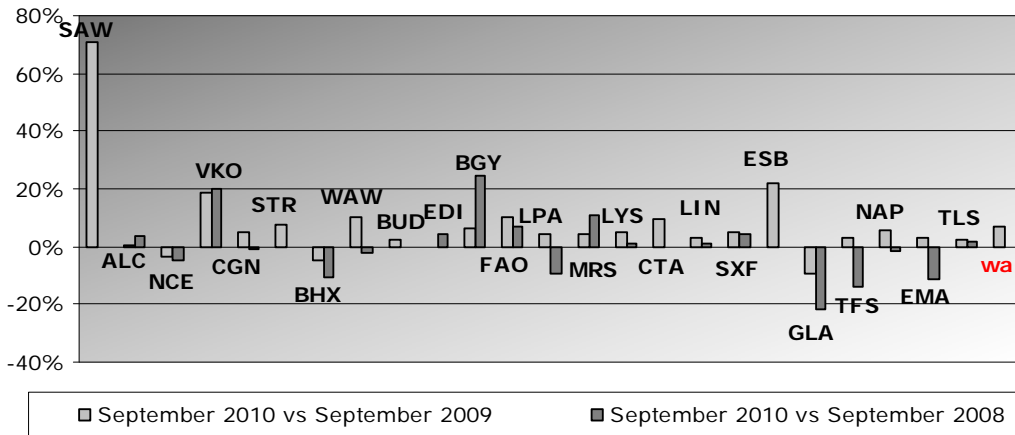
\*weighted average =  $\text{SUM}(\% \text{change} * \text{pax}) / \text{SUM}(\text{pax})$



**Group 3**  
**Airports welcoming between 5 and 10 million passengers**  
**per year (percentage traffic variation September 2010 versus 2009 and 2008)**

Airport	2010v2009 variation %	2010v2008 variation %
SAW	81,6%	N/A
CGN	7,3%	-0,4%
STR	10,6%	1,1%
ALC	2,2%	3,3%
VKO	17,6%	14,4%
NCE	0,3%	-4,4%
BHX	-2,1%	-6,8%
EDI	2,2%	6,0%
BUD	2,0%	0,0%
WAW	-1,2%	-12,6%
LIN	5,1%	-0,7%
LYS	7,8%	N/A
VCE	4,6%	4,4%
ESB	37,1%	N/A
BGY	7,9%	25,0%
SXF	9,6%	9,9%
FAO	11,7%	6,6%
LPA	7,8%	-5,1%
GLA	-5,5%	-14,1%
MRS	7,0%	12,5%
CTA	9,7%	N/A
NAP	5,9%	3,8%
TLS	3,5%	3,8%
TFS	5,0%	-8,3%
EMA	-1,7%	N/A
<b>wa*</b>	<b>8,5%</b>	<b>1,1%</b>

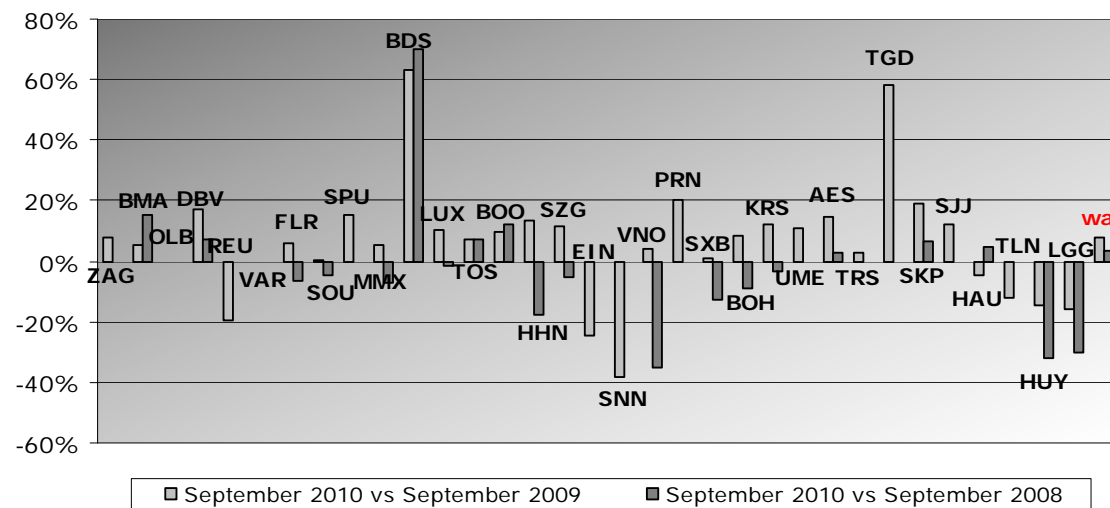
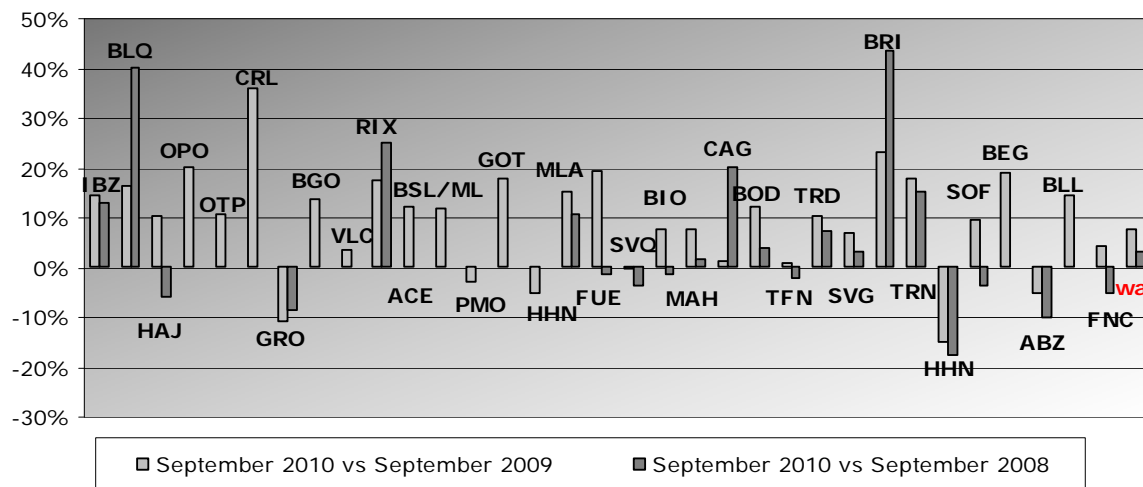
\*weighted average =  $\text{SUM}(\% \text{change} * \text{pax}) / \text{SUM}(\text{pax})$



**Group 4**  
**Airports welcoming less than 5 million passengers**  
**per year (percentage traffic variation September 2010 versus 2009 and 2008)**

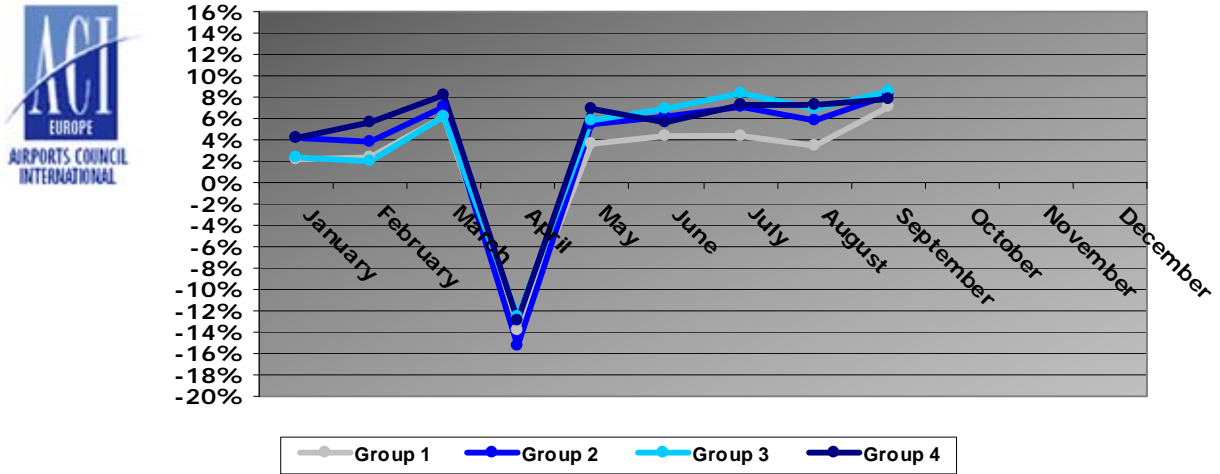
Airport	2010v2009 variation %	2010v2008 variation %
IBZ	14,5%	12,9%
BLQ	16,5%	40,0%
HAJ	10,3%	-5,9%
OPO	20,3%	N/A
OTP	10,9%	N/A
CRL	35,9%	N/A
GRO	-10,9%	-8,3%
BGO	13,8%	N/A
VLC	3,6%	N/A
RIX	17,4%	25,1%
ACE	12,3%	N/A
BSL/ML	12,0%	N/A
PMO	-2,7%	N/A
GOT	17,9%	N/A
CIA	-5,0%	N/A
MLA	15,3%	10,7%
FUE	19,6%	-1,4%
SVQ	-0,3%	-3,7%
BIO	7,9%	-1,3%
MAH	7,7%	1,7%
CAG	1,2%	20,2%
BOD	12,2%	3,9%
TFN	0,8%	-2,2%
TRD	10,4%	7,3%
SVG	6,8%	3,1%
BRI	23,4%	43,5%
TRN	18,0%	15,4%
HHN	-15,1%	-17,4%
SOF	9,6%	-3,7%
BEG	19,1%	N/A
ABZ	-5,1%	-10,2%
BLL	14,4%	N/A
FNC	4,3%	-5,0%
ZAG	7,7%	N/A
BMA	5,1%	15,5%
OLB	-0,2%	N/A
DBV	17,1%	7,4%
REU	-19,5%	N/A
VAR	-0,1%	N/A
FLR	6,1%	-6,6%
SOU	0,1%	-4,5%
SPU	15,4%	N/A
MMX	5,4%	-7,1%
BDS	63,3%	69,8%
LUX	10,5%	-1,3%
TOS	7,0%	7,4%
BOO	9,9%	12,4%
TLL	13,7%	-17,9%
SZG	11,8%	-5,1%
EIN	-24,7%	N/A
SNN	-38,0%	N/A
VNO	4,3%	-35,1%
PRN	20,5%	N/A
SXB	0,7%	-12,6%
BOH	8,6%	-9,1%
KRS	12,0%	-3,1%
UME	11,2%	N/A
AES	14,7%	2,9%
TRS	2,6%	N/A
TGD	58,0%	N/A
SKP	18,9%	6,5%
SJJ	12,2%	N/A
HAU	-4,8%	4,5%
TLN	-11,8%	N/A
HUY	-14,5%	-32,1%
LGG	-15,9%	-29,8%
<b>wa*</b>	<b>7,8%</b>	<b>3,3%</b>

\*weighted average=SUM(%change\*pax)/SUM(pax)



## Year-to-date airport passenger trends

The graphic illustrates and compares the trends of the different airport Groups 1, 2, 3 and 4 for 2010.



The graphic compares the amount of total commercial passengers 2010 with 2009. The airports included, in this graphic, are: LHR, FRA, CDG, AMS, MAD, IST, LGW, FCO, MUC, BCN, ORY, STN, MAN, MXP, ZRH, CPH, ARN, DUB, OSL, BRU, VIE, DUS, ATH, PMI, AGP, DME, HEL, TXL, LIS, HAM, PRG.

