



# Airport Traffic Report

## July 2007

## European passenger traffic up 6.6% during July 2007

The '**ACI EUROPE Airport Traffic Report - July 2007**' includes **102 airports** in total.

The overall **passenger** traffic at European airports increased by **+6.6%** in **July 2007** compared with July 2006. The overall **freight** traffic among European airports increased **+4.6%** in July 2007 when compared with the corresponding month in 2006. The overall figure for **movements** at European airports increased **+5.0%** in July 2007 when compared with July 2006.

Passenger figures for July 2007 once again indicate that Group 4 airports (airports welcoming less than 5 million passengers per year) had the largest increase in traffic - with an average increase of **+9.5%** when compared with July 2006 - and an average increase of **+19.3%** when compared with July 2005.

Airports welcoming more than 25 million passengers per year (Group 1), airports welcoming between 10 and 25 million passengers (Group 2) and airports welcoming between 5 and 10 million passengers (Group 3) reported an average increase of **+6.4%**, **+6.2%** and **+5.7%** respectively when compared with July 2006. The same comparison of July 2007 with July 2005 demonstrates an average increase of **+12.6%**, **+13.3%** and **+6.9%** respectively.

Examples of airports that experienced the highest increase in passenger traffic per group, when comparing July 2007 with July 2006, include:

- **Group 1 airports** – Madrid (**+18.1%**), Barcelona (**+16.0%**) and Munich (**11.7%**);
- **Group 2 airports** – Moscow- Domodedovo (**+22.0%**), Lisbon (**+10.3%**) and Athens (**+9.2%**);
- **Group 3 airports** – Moscow-Vnukovo (**+19.4%**), Marseille (**+16.2%**) and Geneva (**+14.5%**);
- **Group 4 airports** – Riga (**+29.1%**), Stockholm Bromma (**+23.3%**) and Nuremberg (**+16.8%**).

Airports		Passengers				Commercial movements		Freight (metric tonnes)	
		July 2007	2007v 2006 variation %	January – July	2007v 2006 variation %	July 2007	2007v 2006 variation %	July 2007	2007v 2006 variation %
1	<b>London Heathrow</b> (LHR)	6,444,800	-1.6%	39,153,300	-1.2%	41,065	0.2%	111,874	4.0%
2	<b>Paris Roissy</b> (CDG)	5,917,800	6.6%	34,458,400	5.1%	48,703	2.2%	N/A	N/A
3	<b>Frankfurt</b> (FRA)	5,191,300	2.1%	30,884,100	2.4%	42,676	0.8%	172,597	0.8%
4	<b>Madrid</b> (MAD)	5,041,800	18.1%	29,543,800	14.5%	42,408	15.8%	26,832	-4.5%
5	<b>Amsterdam</b> (AMS)	4,925,800	3.7%	27,317,300	3.9%	40,464	3.0%	133,444	7.8%
6	<b>London Gatwick</b> (LGW)	3,789,200	1.7%	19,877,300	2.2%	25,127	2.0%	14,051	-20.0%
7	<b>Barcelona</b> (BCN)	3,316,700	16.0%	18,672,300	9.6%	31,701	12.4%	8,110	5.0%
8	<b>Rome-Fiumicino</b> (FCO)	3,305,700	10.8%	18,562,000	7.7%	30,293	7.4%	12,853	12.1%
9	<b>Palma de Mallorca</b> (PMI)	3,188,000	4.2%	12,947,000	3.1%	23,762	2.9%	2,326	11.6%
10	<b>Munich</b> (MUC)	3,176,900	11.7%	19,212,600	10.7%	36,387	5.5%	21,437	13.7%
11	<b>Paris Orly</b> (ORY)	2,622,600	5.4%	15,579,700	3.8%	20,933	4.5%	N/A	N/A
12	<b>London Stansted</b> (STN)	2,445,800	2.3%	13,766,400	0.7%	17,905	3.7%	18,052	-2.3%
13	<b>Dublin</b> (DUB)	2,442,000	7.2%	13,288,900	10.1%	18,263	5.3%	8,898	-10.1%
14	<b>Manchester</b> (MAN)	2,401,200	-3.5%	12,647,900	-2.4%	20,020	-2.2%	15,133	29.8%
15	<b>Milan-Malpensa</b> (MXP)	2,367,700	7.5%	13,573,100	9.2%	24,277	5.8%	42,157	11.5%
16	<b>Copenhagen</b> (CPH)	2,127,800	3.0%	12,331,300	2.5%	21,866	1.6%	N/A	N/A
17	<b>Moscow-Domodedovo</b> (DME)	2,113,300	22.0%	10,009,000	19.6%	17,820	19.6%	9,228	-1.7%
18	<b>Zurich</b> (ZRH)	2,010,500	6.2%	11,684,000	7.8%	19,930	0.5%	22,131	4.0%
19	<b>Brussels</b> (BRU)	1,896,000	6.3%	10,038,700	4.1%	21,863	3.8%	60,366	11.0%
20	<b>Vienna</b> (VIE)	1,856,400	9.1%	10,419,000	9.0%	22,856	7.5%	15,646	1.0%
21	<b>Düsseldorf</b> (DUS)	1,852,600	9.1%	10,027,100	7.0%	18,803	6.3%	5,299	2.4%
22	<b>Athens</b> (ATH)	1,852,200	9.2%	9,274,600	9.9%	18,178	6.9%	9,624	0.7%
23	<b>Oslo</b> (OSL)	1,752,800	4.4%	10,847,500	7.3%	17,312	6.6%	4,951	1.7%
24	<b>Malaga</b> (AGP)	1,520,500	6.4%	7,724,600	3.1%	12,601	2.4%	508	-13.1%
25	<b>Stockholm-Arlanda</b> (ARN)	1,439,900	4.1%	10,238,900	0.5%	14,017	-0.2%	N/A	N/A
26	<b>Lisbon</b> (LIS)	1,393,700	10.3%	7,489,000	8.7%	13,272	7.7%	6,999	-9.1%

Airports		Passengers				Commercial movements		Freight (metric tonnes)	
		July 2007	2007v 2006 variation %	January – July	2007v 2006 variation %	July 2007	2007v 2006 variation %	July 2007	2007v 2006 variation %
27	<b>Prague</b> (PRG)	1,295,900	2.8%	8,059,300	7.1%	15,890	3.2%	3,790	-0.4%
28	<b>Hamburg</b> (HAM)	1,209,700	7.5%	7,139,700	4.3%	13,159	6.1%	6,603	8.8%
29	<b>Nice</b> (NCE)	1,175,500	4.4%	6,021,200	3.6%	13,881	4.8%	738	-9.9%
30	<b>Berlin</b> (TXL)	1,169,400	8.2%	7,273,200	8.8%	12,262	7.3%	1,317	13.2%
31	<b>Helsinki</b> (HEL)	1,098,600	7.2%	7,474,700	6.0%	12,722	4.8%	10,782	8.4%
32	<b>Cologne/Bonn</b> (CGN)	1,049,400	7.9%	5,929,100	5.5%	12,703	1.4%	61,874	12.1%
33	<b>Alicante</b> (ALC)	1,009,900	3.5%	5,094,200	0.9%	8,021	5.7%	394	-14.4%
34	<b>Stuttgart</b> (STR)	1,009,600	11.0%	5,789,100	0.6%	11,946	4.8%	1,756	13.5%
35	<b>Geneva</b> (GVA)	1,004,200	14.5%	6,526,600	8.6%	10,926	12.2%	2,603	2.4%
36	<b>Glasgow</b> (GLA)	976,500	-5.8%	5,033,900	0.0%	8,944	-5.3%	384	-12.7%
37	<b>Milan Linate</b> (LIN)	965,500	3.9%	5,837,400	1.5%	9,057	2.3%	1,593	-5.9%
38	<b>Warsaw</b> (WAW)	964,000	13.8%	5,160,700	13.7%	12,084	3.1%	4,322	4.5%
39	<b>Birmingham</b> (BHX)	963,600	0.8%	5,207,300	-0.3%	9,652	-5.7%	1,299	-11.9%
40	<b>Budapest</b> (BUD)	938,500	1.8%	4,785,400	2.4%	11,266	-0.4%	4,570	-13.2%
41	<b>Edinburgh</b> (EDI)	917,100	6.3%	5,164,600	4.2%	10,376	0.0%	1,481	-63.5%
42	<b>Ibiza</b> (IBZ)	866,600	7.8%	2,505,600	6.6%	8,360	8.0%	527	-6.0%
43	<b>Gran Canaria</b> (LPA)	842,900	-1.7%	5,901,800	-0.6%	8,923	-1.4%	2,883	-3.5%
44	<b>Moscow- Vnukovo</b> (VKO)	751,500	19.4%	3,484,800	26.3%	11,868	14.2%	1,453	9.6%
45	<b>Venice</b> (VCE)	749,900	12.1%	4,004,400	11.2%	7,943	8.2%	2,081	2.3%
46	<b>Marseille</b> (MRS)	732,800	16.2%	4,003,000	14.7%	9,160	8.3%	3,431	0.4%
47	<b>Faro</b> (FAO)	720,900	6.6%	3,105,800	8.4%	5,365	17.3%	107	-52.9%
48	<b>Lyon</b> (LYS)	717,100	10.2%	4,279,800	6.8%	11,237	5.2%	3,457	17.0%
49	<b>Tenerife Sur</b> (TFS)	693,100	-3.7%	4,880,600	-2.4%	4,917	-0.9%	762	6.6%
50	<b>Hanover</b> (HAJ)	603,200	-0.6%	3,156,400	-2.0%	6,745	0.3%	984	90.3%
51	<b>Naples</b> (NAP)	603,000	12.3%	3,189,200	12.7%	6,129	22.0%	157	-4.1%
52	<b>Valencia</b> (VLC)	585,800	19.0%	3,343,200	20.2%	7,267	16.3%	1,136	10.3%
53	<b>Nottingham East Midlands</b> (EMA)	574,900	11.4%	3,058,200	17.1%	5,957	6.8%	22,305	1.7%

Airports		Passengers				Commercial movements		Freight (metric tonnes)	
		July 2007	2007v 2006 variation %	January – July	2007v 2006 variation %	July 2007	2007v 2006 variation %	July 2007	2007v 2006 variation %
54	Milan/Orio al Serio (BGY)	572,300	4.4%	3,287,500	11.4%	5,268	4.5%	11,531	-1.6%
55	Toulouse (TLS)	565,800	8.1%	3,637,400	3.3%	6,887	3.1%	3,404	3.7%
56	Liverpool (LPL)	543,500	12.1%	3,198,400	13.2%	4,194	-0.6%	395	-29.5%
57	Lanzarote (ACE)	534,300	-0.1%	3,149,200	-0.1%	4,692	8.7%	464	-22.7%
58	Girona (GRO)	524,900	34.7%	2,637,300	27.4%	3,726	42.9%	31	-68.4%
59	Rome-Ciampino (CIA)	502,800	11.2%	3,195,100	15.3%	3,598	-0.5%	2,009	-2.0%
60	Menorca (MAH)	477,100	3.0%	1,492,100	4.9%	4,386	-1.9%	418	4.3%
61	Bologna (BLQ)	462,500	7.7%	N/A	N/A	6,044	7.0%	1,699	19.6%
62	Bilbao (BIO)	443,800	14.9%	2,419,200	9.9%	5,099	10.0%	282	-4.8%
63	Fuerteventura (FUE)	436,900	1.3%	2,577,900	4.3%	3,837	-2.7%	262	3.8%
64	Basel-Mulhouse (BSL/ML)	433,000	6.4%	2,490,300	10.7%	5,148	0.8%	3,781	73.7%
65	Sevilla (SVQ)	426,600	26.2%	2,544,400	15.1%	4,480	21.6%	646	-37.0%
66	Porto (OPO)	424,800	14.6%	2,188,100	16.7%	4,957	12.0%	2,901	-5.4%
67	Hahn (HHN)	411,400	12.2%	2,348,100	14.2%	3,644	3.1%	9,053	-10.3%
68	Bergen (BGO)	375,700	1.3%	2,610,900	6.3%	5,407	3.3%	253	32.2%
69	Tenerife Norte (TFN)	368,900	4.2%	2,374,500	2.1%	5,080	-0.8%	2,097	8.8%
70	Malta (MLA)	367,500	12.2%	1,599,400	7.1%	3,131	0.5%	1,511	2.2%
71	Nuremberg (NUE)	365,100	16.8%	2,391,600	3.8%	5,474	6.4%	1,027	2.9%
72	Goteborg (GOT)	354,000	1.7%	2,485,100	1.2%	4,379	-1.2%	3,922	-1.2%
73	Bordeaux (BOD)	349,200	9.3%	2,022,200	6.9%	4,696	4.8%	686	5.0%
74	Aberdeen (ABZ)	325,600	10.5%	1,969,700	9.9%	9,125	8.6%	315	-0.3%
75	Turin (TRN)	321,800	12.5%	2,082,100	4.9%	4,491	17.4%	84	-30.0%
76	Riga (RIX)	320,500	29.1%	1,733,400	25.6%	4,229	19.3%	451	-29.6%
77	Glasgow Prestwick (PIK)	260,600	-2.5%	N/A	N/A	1,968	5.8%	2328	-3.7%
78	Trondheim (TRD)	257,300	1.8%	1,918,700	7.8%	3,274	1.9%	159	31.6%
79	Stavanger (SVG)	256,300	3.9%	1,874,800	7.6%	3,890	8.9%	242	-16.4%

Airports		Passengers				Commercial movements		Freight (metric tonnes)	
		July 2007	2007v 2006 variation %	January - July	2007v 2006 variation %	July 2007	2007v 2006 variation %	July 2007	2007v 2006 variation %
80	<b>Charleroi</b> (CRL)	239,400	12.3%	1,375,100	14.5%	1,469	13.9%	N/A	N/A
81	<b>Madeira</b> (FNC)	228,800	5.1%	1,394,100	1.7%	1,942	-9.3%	589	3.3%
82	<b>Southampton</b> (SOU)	195,700	-0.6%	1,110,600	2.5%	4,446	3.7%	21	16.7%
83	<b>Ljubljana</b> (LJU)	185,300	11.0%	821,500	12.2%	346	8.1%	1,188	132.9%
84	<b>Florence</b> (FLR)	183,200	-2.7%	N/A	N/A	2,523	0.8%	6	-69.9%
85	<b>Vilnius</b> (VNO)	175,900	10.8%	N/A	N/A	2,692	5.0%	345	2.4%
86	<b>Strasbourg</b> (SXB)	148,500	-13.8%	N/A	N/A	2,975	-7.5%	34	-22.7%
87	<b>Tromsøe</b> (TOS)	148,200	1.7%	938,200	3.7%	2,633	0.8%	171	9.5%
88	<b>Malmö</b> (MMX)	144,600	8.4%	1,085,600	-1.6%	1,950	11.2%	3,603	22.3%
89	<b>Bodo</b> (BOO)	144,400	6.8%	878,600	6.5%	3,126	4.2%	129	12.0%
90	<b>Stockholm-Bromma</b> (BMA)	90,000	23.3%	1,011,100	13.6%	1,711	27.3%	18	260.0%
91	<b>Skopje</b> (SKP)	79,000	16.7%	N/A	N/A	1,093	5.5%	144	10.5%
92	<b>Kristiansand</b> (KRS)	73,200	3.8%	499,300	8.2%	1,759	15.2%	42	6.2%
93	<b>Liege</b> (LGG)	66,200	9.0%	182,700	3.9%	2,544	13.8%	37,840	20.3%
94	<b>Aalesund</b> (AES)	64,000	1.2%	434,300	4.0%	904	8.1%	74	18.3%
95	<b>Haugesund</b> (HAU)	37,900	-7.8%	289,100	8.7%	604	3.2%	24	20.3%
96	<b>Ohrid</b> (OHD)	8,700	-14.2%	27,100	-7.1%	123	-10.9%	2	440.2%
97	<b>Bucharest</b> (OTP)	N/A	N/A	N/A	N/A	N/A	N/A	N/A	N/A
98	<b>Dubrovnik</b> (DBV)	N/A	N/A	N/A	N/A	N/A	N/A	N/A	N/A
99	<b>Olbia</b> (OLB)	N/A	N/A	N/A	N/A	N/A	N/A	N/A	N/A
100	<b>Katowice</b> (KTW)	N/A	N/A	N/A	N/A	N/A	N/A	N/A	N/A
101	<b>Bournemouth</b> (BOH)	N/A	N/A	N/A	N/A	N/A	N/A	N/A	N/A
102	<b>Humberside</b> (HUY)	N/A	N/A	N/A	N/A	N/A	N/A	N/A	N/A

----- Preliminary traffic figures -----

- \*Terminal passengers
- \*\*Freight & Mail
- \*\*\* N/A due to runway closure

### **Total commercial passengers**

**International passengers** (enplaned + deplaned) + **domestic passengers** (enplaned + deplaned) + **direct transit passengers** (passengers who arrive at and depart from the airport on a flight bearing the same number. They are counted only ONCE).

### **Commercial movements**

Landing or take off of an aircraft operating a scheduled or non scheduled commercial service.

### **Freight**

Freight loaded and unloaded (arriving or departing) at the airport. Freight comprises goods, newspapers, diplomatic bags, parcel post and express parcel.

**The ten largest airports on freight – reporting to  
ACI EUROPE**  
(metric tonnes)

Airports		July 2007	2007v2006 variation %
1	Frankfurt (FRA)	172,597	0.8%
2	Amsterdam (AMS)	133,444	7.8%
3	London Heathrow (LHR)	111,874	4.0%
4	Cologne/Bonn (CGN)	61,874	12.1%
5	Brussels (BRU)	60,366	11.0%
6	Milan-Malpensa (MXP)	42,157	11.5%
7	Liege (LGG)	37,840	20.3%
8	Madrid (MAD)	26,832	-4.5%
9	Nottingham East Midlands (EMA)	22,305	1.7%
10	Zurich (ZRH)	22,131	4.0%

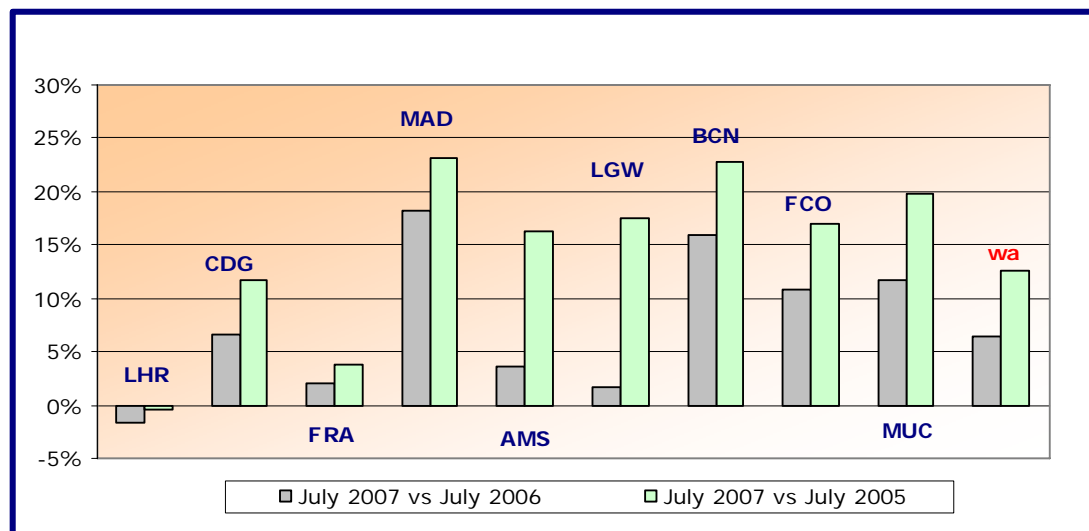
\* Table only includes airports that send statistics regarding freight to ACI EUROPE

**Group 1**

**Airports welcoming more than 25 million passengers per year  
(percentage traffic variation July 2007 versus 2006 and 2005)**

Airport	2007v2006 variation %	2007v2005 variation %
LHR	-1.6%	-0.4%
CDG	+6.6%	+11.8%
FRA	+2.1%	+3.8%
MAD	+18.1%	+23.2%
AMS	+3.7%	+16.4%
LGW	+1.7%	+17.4%
BCN	+16.0%	+22.8%
FCO	+10.8%	+16.9%
MUC	+11.7%	+19.8%
<b>wa*</b>	<b>+6.4%</b>	<b>+12.6%</b>

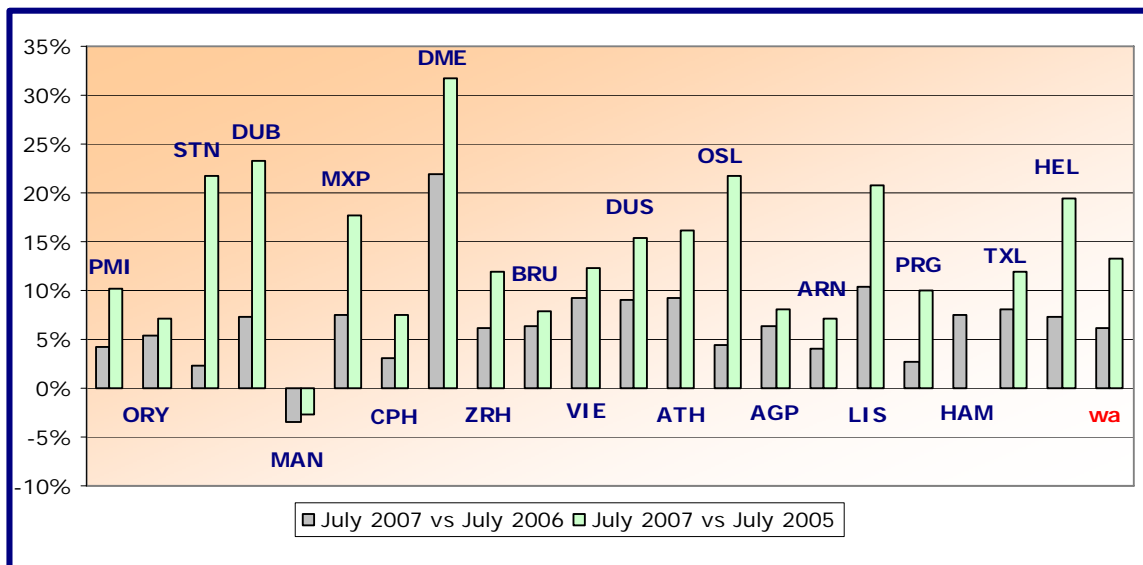
\* weighted average =  $\text{SUM}(\% \text{change} * \text{pax}) / \text{SUM}(\text{pax})$



**Group 2**  
**Airports welcoming between 10 and 25 million passengers**  
**per year (percentage traffic variation July 2007 versus 2006 and 2005)**

Airport	2007v2006 variation %	2007v2005 variation %
PMI	+4.2%	+10.1%
ORY	+5.4%	+7.1%
STN	+2.3%	+21.6%
DUB	+7.2%	+23.2%
MAN	-3.5%	-2.6%
MXP	+7.5%	+17.7%
CPH	+3.0%	+7.5%
DME	+22.0%	+31.8%
ZRH	+6.2%	+12.0%
BRU	+6.3%	+7.8%
VIE	+9.1%	+12.3%
DUS	+9.1%	+15.4%
ATH	+9.2%	+16.1%
OSL	+4.4%	+21.7%
AGP	+6.4%	+8.0%
ARN	+4.1%	+7.1%
LIS	+10.3%	+20.9%
PRG	+2.8%	+10.0%
HAM	+7.5%	N/A
TXL	+8.2%	+11.9%
HEL	+7.2%	+19.5%
<b>wa*</b>	<b>+6.2%</b>	<b>+13.3%</b>

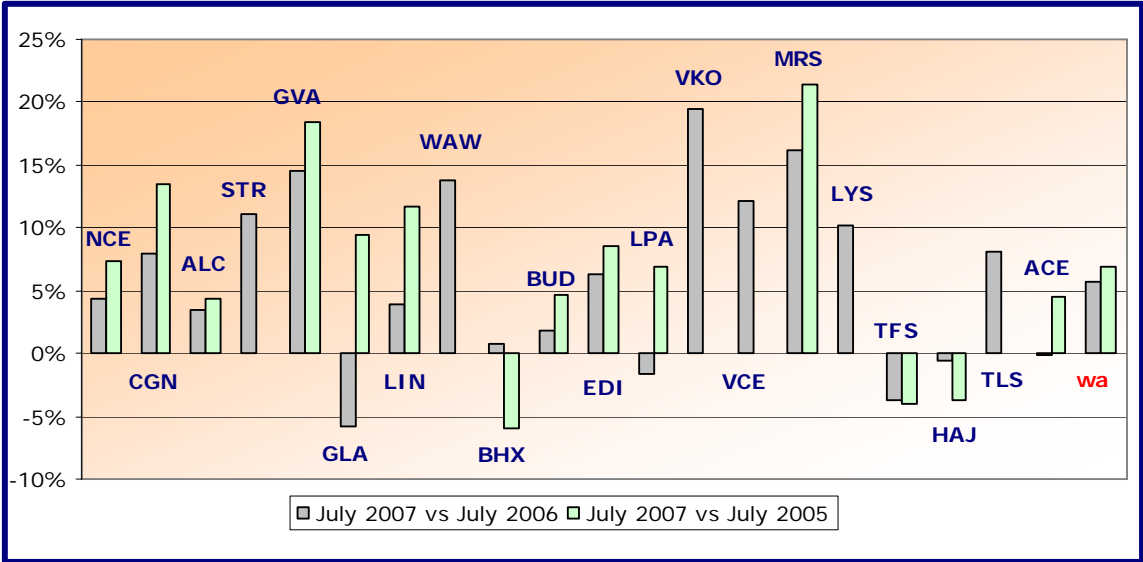
\*weighted average=SUM(%change\*pax)/SUM(pax)



**Group 3**  
**Airports welcoming between 5 and 10 million passengers**  
**per year (percentage traffic variation July 2007 versus 2006 and 2005)**

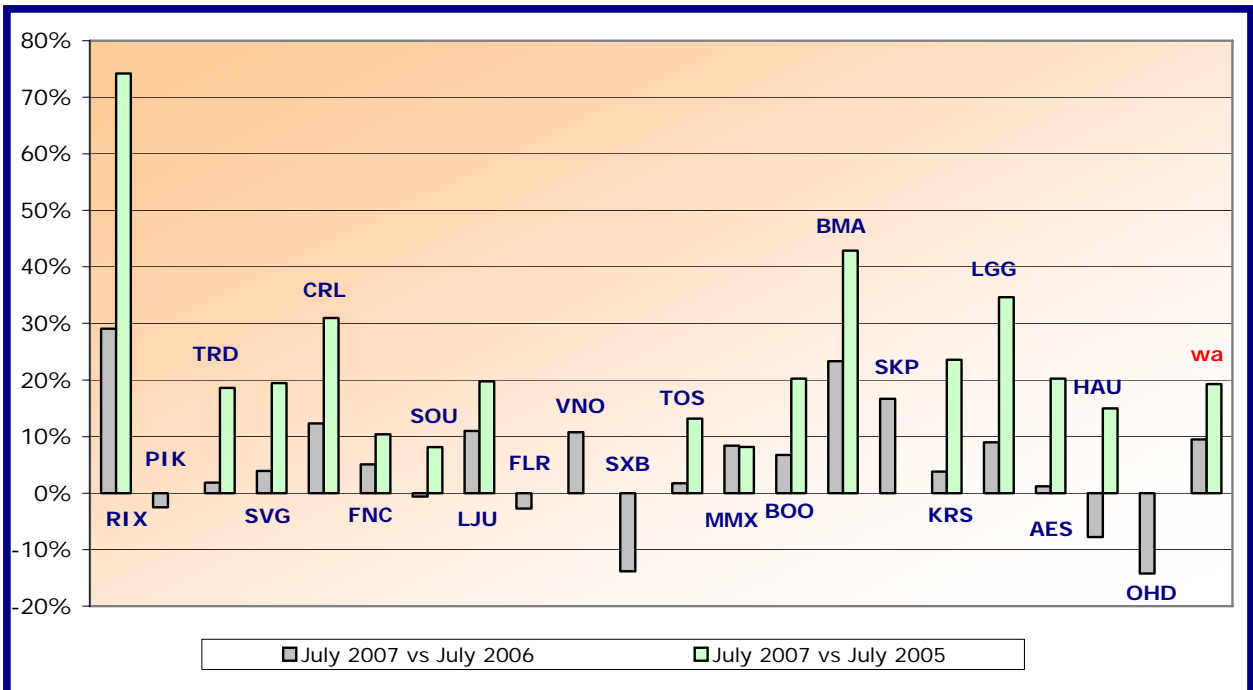
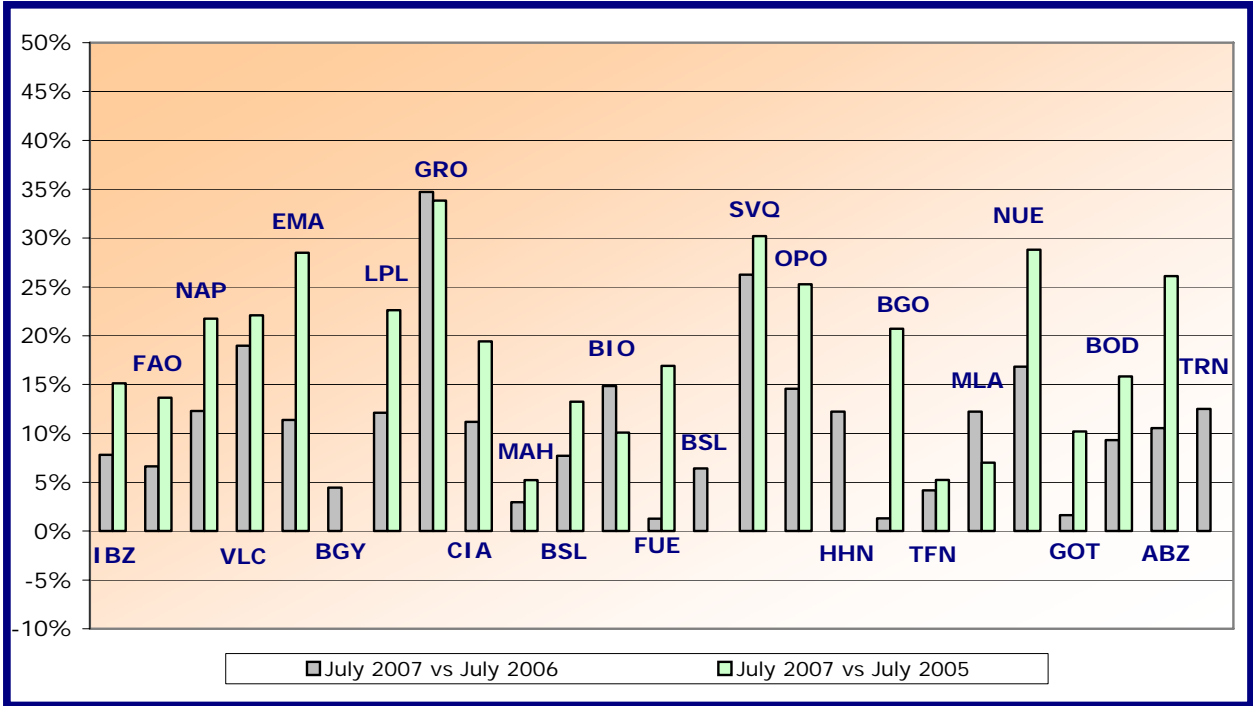
Airport	2007v2006 variation %	2007v2005 variation %
NCE	+4.4%	+7.3%
CGN	+7.9%	+13.5%
ALC	+3.5%	+4.4%
STR	+11.0%	N/A
GVA	+14.5%	+18.4%
GLA	-5.8%	+9.4%
LIN	+3.9%	+11.8%
WAW	+13.8%	N/A
BHX	+0.8%	-5.9%
BUD	+1.8%	+4.6%
EDI	+6.3%	+8.5%
LPA	-1.7%	+6.9%
VKO	+19.4%	N/A
VCE	+12.1%	N/A
MRS	+16.2%	+21.4%
LYS	+10.2%	N/A
TFS	-3.7%	-4.0%
HAJ	-0.6%	-3.7%
TLS	+8.1%	N/A
ACE	-0.1%	+4.6%
<b>wa*</b>	<b>+5.7%</b>	<b>+6.9%</b>

\*weighted average=SUM(%change\*pax)/SUM(pax)



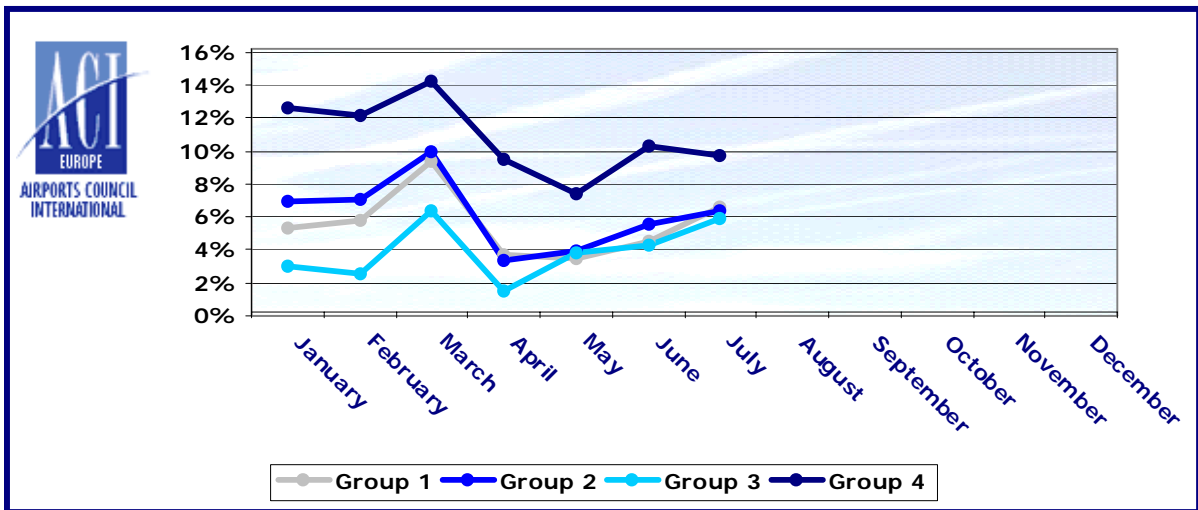
Group 4		
Airports welcoming less than 5 million passengers		
per year (percentage traffic variation July 2007 versus 2006 and 2005)		
Airport	2007v2006 variation %	2007v2005 variation %
IBZ	+7.8%	+15.1%
FAO	+6.6%	+13.7%
NAP	+12.3%	+21.8%
VLC	+19.0%	+22.1%
EMA	+11.4%	+28.5%
BGY	+4.4%	N/A
LPL	+12.1%	+22.6%
GRO	+34.7%	+33.8%
CIA	+11.2%	+19.4%
MAH	+3.0%	+5.2%
BLQ	+7.7%	+13.2%
BIO	+14.9%	+10.1%
FUE	+1.3%	+16.9%
BSL/ML	+6.4%	N/A
SVQ	+26.2%	+30.2%
OPO	+14.6%	+25.3%
HHN	+12.2%	N/A
BGO	+1.3%	+20.7%
TFN	+4.2%	+5.3%
MLA	+12.2%	+7.0%
NUE	+16.8%	+28.8%
GOT	+1.7%	+10.2%
BOD	+9.3%	+15.8%
ABZ	+10.5%	+26.1%
TRN	+12.5%	N/A
RIX	+29.1%	+74.2%
PIK	-2.5%	N/A
TRD	+1.8%	+18.6%
SVG	+3.9%	+19.4%
CRL	+12.3%	+31.0%
FNC	+5.1%	+10.4%
SOU	-0.6%	+8.1%
LJU	+11.0%	+19.8%
FLR	-2.7%	N/A
VNO	+10.8%	N/A
SXB	-13.8%	N/A
TOS	+1.7%	+13.2%
MMX	+8.4%	+8.2%
BOO	+6.8%	+20.2%
BMA	+23.3%	+42.9%
SKP	+16.7%	N/A
KRS	+3.8%	+23.6%
LGG	+9.0%	+34.7%
AES	+1.2%	+20.2%
HAU	-7.8%	+15.0%
OHD	-14.2%	N/A
<b>wa*</b>	<b>+9.5%</b>	<b>+19.3%</b>

\*weighted average=SUM(%change\*pax)/SUM(pax)



## Year-to-date airport passenger trends

The graphic illustrates and compares the trends of the different airport Groups 1, 2, 3 and 4 for 2007.



The graphic compares the amount of total commercial passengers 2007 with 2006, 2005, 2004, 2003, 2002 and 2001. The airports included, in this graphic, are: LHR, FRA, CDG, AMS, MAD, LGW, FCO, MUC, BCN, ORY, STN, MAN, MXP, ZRH, CPH, ARN, DUB, OSL, BRU, VIE, DUS, ATH, PMI, AGP, DME, HEL, TXL, LIS, HAM, PRG.

