



Airport Traffic Report

September 2007

European passenger traffic up 6.9% during September 2007

The '**ACI EUROPE Airport Traffic Report - September 2007**' includes **104 airports** in total. Sofia (SOF) and Tallinn (TLL) are the latest airports to be included in the report.

The overall passenger traffic at European airports increased by +6.2% during Q3 2007 compared with Q3 2006.

The overall **passenger** traffic at European airports increased by **+6.9%** in **September 2007** compared with September 2006. The overall **freight** traffic among European airports increased **+5.1%** in September 2007 when compared with the corresponding month in 2006. The overall figure for **movements** at European airports increased **+3.4%** in September 2007 when compared with September 2006.

Passenger figures for September 2007 once again indicate that Group 4 airports (airports welcoming less than 5 million passengers per year) had the largest increase in traffic - with an average increase of **+9.9%** when compared with September 2006 - and an average increase of **+19.5%** when compared with September 2005.

Airports welcoming more than 25 million passengers per year (Group 1), airports welcoming between 10 and 25 million passengers (Group 2) and airports welcoming between 5 and 10 million passengers (Group 3) reported an average increase of **+5.9%**, **+7.1%** and **+6.0%** respectively when compared with September 2006. The same comparison of September 2007 with September 2005 demonstrates an average increase of **+9.6%**, **+13.1%** and **+9.9%** respectively.

Examples of airports that experienced the highest increase in passenger traffic per group, when comparing September 2007 with September 2006, include:

- **Group 1 airports** – Madrid (**+13.6%**), Rome Fiumicino (**+12.0%**) and Barcelona (**11.1%**);
- **Group 2 airports** – Moscow- Domodedovo (**+29.0%**), Berlin (**+11.0%**) and Vienna (**+10.7%**);
- **Group 3 airports** – Moscow-Vnukovo (**+35.2%**), Venice (**+13.1%**) and Warsaw (**+12.2%**);
- **Group 4 airports** – Girona (**+36.0%**), Katowice (**+35.7%**) and Bucharest (**+30.3%**).

Airports		Passengers				Commercial movements		Freight (metric tonnes)	
		September 2007	2007v 2006 variation %	January – September	2007v 2006 variation %	September 2007	2007v 2006 variation %	September 2007	2007v 2006 variation %
1	London Heathrow (LHR)	6,034,700	2.1%	51,588,100	0.1%	40,108	0.8%	114,624	7.2%
2	Paris Roissy (CDG)	5,419,100	6.1%	45,745,900	5.7%	46,834	2.0%	173,000	13.5%
3	Frankfurt (FRA)	5,029,700	0.9%	41,027,700	2.1%	41,441	0.1%	178,268	2.3%
4	Madrid (MAD)	4,702,500	13.6%	39,147,000	14.4%	40,882	11.2%	26,771	0.1%
5	Amsterdam (AMS)	4,431,600	3.1%	36,570,400	3.8%	37,832	0.8%	139,510	6.6%
6	London Gatwick (LGW)	3,551,900	3.8%	27,400,800	2.7%	24,164	1.8%	13,242	-22.8%
7	Munich (MUC)	3,233,300	7.0%	25,616,700	10.5%	35,724	4.3%	22,493	12.4%
8	Rome-Fiumicino (FCO)	3,145,300	12.0%	24,956,400	8.7%	29,330	8.3%	11,020	9.0%
9	Barcelona (BCN)	3,111,300	11.1%	25,191,000	10.3%	30,477	8.6%	7,840	-0.1%
10	Palma de Mallorca (PMI)	2,949,300	5.7%	19,180,200	3.6%	21,601	3.4%	2,073	-7.9%
11	Manchester (MAN)	2,329,500	-1.5%	17,507,500	-2.0%	19,219	-4.2%	15,238	24.2%
12	Paris Orly (ORY)	2,255,000	3.9%	20,253,600	4.0%	19,951	1.4%	7,700	-2.5%
13	Milan-Malpensa (MXP)	2,217,500	8.7%	18,296,500	9.0%	22,803	4.4%	37,304	9.4%
14	London Stansted (STN)	2,204,200	2.5%	18,502,700	1.7%	17,049	1.3%	17,082	-9.2%
15	Dublin (DUB)	2,187,300	9.2%	17,899,700	9.9%	17,580	5.6%	9,050	-4.8%
16	Moscow-Domodedovo (DME)	2,039,805	29.0%	14,282,823	21.4%	17,161	20.2%	10,845	3.4%
17	Copenhagen (CPH)	1,949,300	1.5%	16,297,700	2.6%	21,362	-4.2%	N/A	N/A
18	Zurich (ZRH)	1,903,200	6.6%	15,555,900	7.4%	19,347	3.1%	21,904	6.7%
19	Düsseldorf (DUS)	1,813,200	8.1%	13,559,600	7.3%	19,339	4.5%	5,374	-8.9%
20	Vienna (VIE)	1,809,600	10.7%	14,043,400	9.4%	22,046	6.1%	16,746	0.7%
21	Oslo (OSL)	1,786,800	7.8%	14,399,300	7.1%	19,394	3.5%	5,425	-7.6%
22	Brussels (BRU)	1,758,900	8.2%	13,594,500	5.1%	21,493	3.3%	63,086	12.5%
23	Athens (ATH)	1,695,000	9.2%	12,863,900	10.1%	17,301	8.9%	9,731	-0.4%
24	Stockholm-Arlanda (ARN)	1,678,800	3.1%	13,492,900	1.1%	18,331	-6.7%	8,522	3.1%
25	Malaga (AGP)	1,427,700	6.0%	10,698,900	4.2%	11,644	1.5%	493	-4.9%
26	Lisbon (LIS)	1,309,400	10.6%	10,287,100	8.9%	11,916	4.3%	6,945	0.6%

Airports		Passengers				Commercial movements		Freight (metric tonnes)	
		September 2007	2007v 2006 variation %	January – September	2007v 2006 variation %	September 2007	2007v 2006 variation %	September 2007	2007v 2006 variation %
27	Berlin (TXL)	1,290,200	11.0%	9,766,900	10.0%	12,749	8.1%	1,464	6.7%
28	Prague (PRG)	1,268,900	4.8%	9,441,400	6.3%	15,409	2.4%	4,177	1.3%
29	Hamburg (HAM)	1,223,697	8.1%	9,553,059	5.4%	N/A	N/A	2,915	4.7%
30	Helsinki (HEL)	1,170,900	6.5%	9,785,000	6.4%	16,004	1.5%	12,165	7.2%
31	Stuttgart (STR)	1,061,977	4.1%	7,913,295	1.5%	12,169	1.6%	1,523	-8.4%
32	Cologne/Bonn (CGN)	1,060,563	7.8%	8,007,271	5.8%	12,748	0.5%	62,860	5.7%
33	Nice (NCE)	1,014,900	5.2%	8,177,200	4.3%	12,130	3.0%	655	-28.8%
34	Birmingham (BHX)	969,914	2.1%	7,183,161	0.4%	9,678	-3.0%	2,209	70.8%
35	Warsaw (WAW)	963,278	12.2%	7,088,876	13.5%	11,793	2.2%	4,712	9.0%
36	Alicante (ALC)	941,090	3.2%	7,065,931	1.8%	7,315	2.9%	455	12.7%
37	Milan Linate (LIN)	923,400	5.5%	7,563,900	2.4%	8,735	-0.3%	1,426	-13.5%
38	Glasgow (GLA)	890,102	-0.1%	6,798,026	0.1%	8,420	-4.1%	375	-1.8%
39	Budapest (BUD)	882,700	5.2%	6,644,200	2.9%	10,837	-1.9%	4,846	-15.7%
40	Geneva (GVA)	862,400	10.8%	8,333,300	9.6%	10,492	11.0%	2,491	-2.3%
41	Edinburgh (EDI)	848,777	6.5%	6,908,714	5.2%	9,782	-3.2%	2,036	-42.3%
42	Gran Canaria (LPA)	795,400	3.6%	7,548,100	-0.1%	8,398	0.2%	2,913	0.9%
43	Moscow-Vnukovo (VKO)	751,805	35.2%	5,048,041	26.4%	11,695	16.8%	1,919	20.2%
44	Ibiza (IBZ)	742,832	8.7%	4,207,481	7.6%	6,830	7.1%	484	1.8%
45	Venice (VCE)	715,245	13.1%	5,466,341	11.7%	7,366	6.9%	2,015	-13.3%
46	Lyon (LYS)	662,360	8.8%	5,600,246	7.7%	11,067	1.6%	2,767	-17.6%
47	Tenerife Sur (TFS)	643,900	-8.9%	6,319,500	-3.3%	4,603	-5.0%	801	-0.2%
48	Faro (FAO)	634,369	7.0%	4,534,802	8.6%	4,218	9.3%	70	-38.8%
49	Naples (NAP)	617,871	13.4%	4,451,941	13.0%	6,088	22.8%	127	-26.2%
50	Hanover (HAJ)	600,501	-0.1%	4,333,615	-1.5%	6,456	-2.5%	615	95.9%
51	Toulouse (TLS)	555,699	5.1%	4,668,823	4.0%	7,178	0.1%	4,460	-14.2%
52	Nottingham East Midlands (EMA)	536,723	7.6%	4,194,376	15.4%	5,728	3.4%	21,567	-9.2%
53	Valencia (VLC)	534,315	15.4%	4,509,465	19.7%	6,911	15.2%	1,065	-7.5%

Airports		Passengers				Commercial movements		Freight (metric tonnes)	
		September 2007	2007v 2006 variation %	January – September	2007v 2006 variation %	September 2007	2007v 2006 variation %	September 2007	2007v 2006 variation %
54	Milan/Orio al Serio (BGY)	508,354	4.5%	4,395,923	9.5%	4,838	3.6%	11,022	-11.9%
55	Liverpool (LPL)	504,350	11.2%	4,277,976	13.4%	3,946	-1.3%	331	8.5%
56	Lanzarote (ACE)	494,248	2.0%	4,245,056	-0.1%	4,424	8.3%	555	-10.3%
57	Girona (GRO)	477,384	36.0%	3,664,965	30.3%	3,387	45.7%	7	-66.3%
58	Rome-Ciampino (CIA)	456,400	4.4%	4,148,800	13.2%	3,379	-5.0%	1,816	-10.6%
59	Bucharest (OTP)	453,268	30.3%	N/A	N/A	5,524	13.2%	1,167	-13.5%
60	Bergen (BGO)	435,500	3.9%	3,465,800	5.8%	6,402	-2.8%	226	-33.1%
61	Bologna (BLQ)	433,451	8.6%	N/A	N/A	5,556	6.9%	1,378	-0.9%
62	Goteborg (GOT)	424,087	1.6%	3,293,898	1.3%	5,592	-5.6%	4,737	-8.0%
63	Sevilla (SVQ)	416,230	22.8%	3,413,562	17.4%	4,436	22.4%	522	-52.1%
64	Fuerteventura (FUE)	410,599	4.9%	3,475,759	4.0%	3,580	0.0%	261	-3.4%
65	Basel-Mulhouse (BSL/ML)	410,130	2.8%	3,315,262	9.3%	5,094	-1.2%	3349	-5.3%
66	Bilbao (BIO)	404,901	10.3%	3,232,856	9.8%	4,855	4.0%	251	-3.8%
67	Menorca (MAH)	395,887	-0.3%	2,417,080	4.2%	3,705	-1.4%	395	0.1%
68	Nuremberg (NUE)	391,439	12.1%	3,181,565	5.6%	5,429	2.0%	994	-28.4%
69	Hahn (HHN)	372,698	10.0%	3,134,937	13.0%	3,497	15.4%	10,608	5.2%
70	Tenerife Norte (TFN)	343,456	1.7%	3,097,602	2.7%	4,877	-0.5%	2,279	26.8%
71	Malta (MLA)	342,797	15.2%	2,331,517	8.9%	2,916	2.1%	1,438	6.8%
72	Bordeaux (BOD)	338,284	7.2%	2,670,699	7.6%	4,679	1.9%	597	-17.8%
73	Porto (OPO)	337,435	8.9%	3,059,798	16.2%	4,163	4.7%	3,510	50.6%
74	Aberdeen (ABZ)	311,416	10.5%	2,597,385	10.3%	8,819	2.1%	327	-8.1%
75	Stavanger (SVG)	310,000	6.5%	2,470,600	7.0%	4,717	7.1%	237	-16.5%
76	Turin (TRN)	308,006	14.2%	2,676,083	7.0%	4,395	16.9%	88	-37.3%
77	Trondheim (TRD)	307,700	4.8%	2,522,300	7.1%	4,201	-0.4%	185	4.5%
78	Riga (RIX)	305,559	29.2%	2,367,902	26.5%	4,066	14.2%	412	-74.0%
79	Sofia (SOF)	269,776	21.8%	N/A	N/A	3,309	11.2%	1,209	10.5%

Airports		Passengers				Commercial movements		Freight (metric tonnes)	
		September 2007	2007v 2006 variation %	January - September	2007v 2006 variation %	September 2007	2007v 2006 variation %	September 2007	2007v 2006 variation %
80	Olbia (OLB)	239,683	6.1%	N/A	N/A	2,510	6.6%	97	22.9%
81	Madeira (FNC)	222,267	3.8%	1,865,740	1.1%	1,847	-7.7%	523	-12.9%
82	Charleroi (CRL)	219,088	11.2%	1,829,975	13.7%	1,409	13.1%	N/A	N/A
83	Florence (FLR)	190,801	1.7%	N/A	N/A	2,466	1.9%	4	-69.6%
84	Southampton (SOU)	190,407	2.6%	1,505,384	2.5%	4,129	-1.7%	26	100.0%
85	Malmö (MMX)	188,402	3.7%	1,451,985	0.0%	2,437	-6.3%	3,886	10.2%
86	Dubrovnik (DBV)	178,472	3.5%	N/A	N/A	1,542	-0.5%	73	0.7%
87	Vilnius (VNO)	171,755	17.6%	N/A	N/A	2,754	11.0%	372	-5.6%
88	Ljubljana (LJU)	170,644	17.0%	1,175,599	12.3%	3,081	15.3%	1,184	42.7%
89	Stockholm-Bromma (BMA)	170,200	4.6%	1,324,100	12.1%	3,139	-5.5%	26	225.0%
90	Tallinn (TLL)	165,643	15.4%	N/A	N/A	2,887	20.4%	3,381	876.7%
91	Tromsø (TOS)	137,573	3.9%	1,224,009	3.3%	2,732	0.4%	185	-5.4%
92	Strasbourg (SXB)	135,970	-28.2%	1,361,865	-9.7%	3,050	-13.7%	35	-23.9%
93	Bodø (BOO)	126,965	2.1%	1,141,431	5.5%	3,185	-0.4%	136	9.5%
94	Bournemouth (BOH)	117,070	24.5%	N/A	N/A	N/A	N/A	863	-7.3%
95	Kristiansand (KRS)	82,562	4.8%	657,231	7.9%	1,852	11.7%	43	4.2%
96	Alesund (AES)	71,834	7.5%	576,278	5.0%	999	12.2%	88	21.2%
97	Humberside (HUY)	58,347	-12.1%	N/A	N/A	1,421	-6.3%	661	116.7%
98	Skopje (SKP)	58,093	12.5%	N/A	N/A	927	8.9%	161	-28.4%
99	Haugesund (HAU)	45,857	4.3%	382,565	7.8%	802	18.5%	25	-4.4%
100	Liege (LGG)	42,824	9.3%	292,160	7.0%	2,282	1.8%	36,928	12.5%
101	Ohrd (OHD)	4,318	7.0%	38,829	-7.6%	98	16.7%	1	-80.3%
102	Marseille (MRS)	N/A	N/A	N/A	N/A	N/A	N/A	N/A	N/A
103	Katowice (KTW)	N/A	N/A	N/A	N/A	N/A	N/A	N/A	N/A
104	Glasgow Prestwick (PIK)	N/A	N/A	N/A	N/A	N/A	N/A	N/A	N/A

----- Preliminary traffic figures -----

*Terminal passengers

**Freight & Mail

*** N/A due to runway closure

Total commercial passengers

International passengers (enplaned + deplaned) + **domestic passengers** (enplaned + deplaned) + **direct transit passengers** (passengers who arrive at and depart from the airport on a flight bearing the same number. They are counted only ONCE).

Commercial movements

Landing or take off of an aircraft operating a scheduled or non scheduled commercial service.

Freight

Freight loaded and unloaded (arriving or departing) at the airport. Freight comprises goods, newspapers, diplomatic bags, parcel post and express parcel.

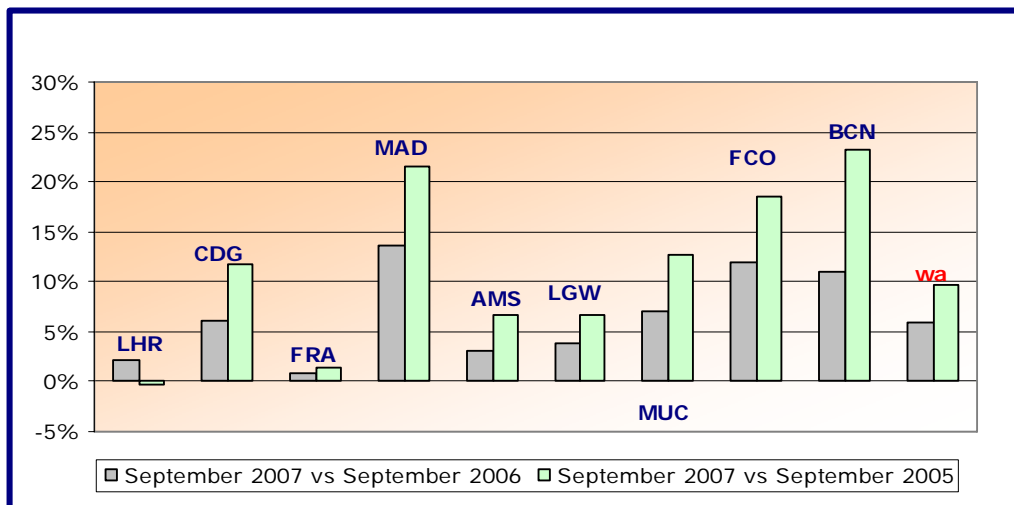
**The ten largest airports on freight – reporting to
ACI EUROPE**
(metric tonnes)

Airports		September 2007	2007v2006 variation %
1	Frankfurt (FRA)	178,268	2.3%
2	Paris Roissy (CDG)	173,000	13.5%
3	Amsterdam (AMS)	139,510	6.6%
4	London Heathrow (LHR)	114,624	7.2%
5	Brussels (BRU)	63,086	12.5%
6	Cologne/Bonn (CGN)	62,860	5.7%
7	Milan-Malpensa (MXP)	37,304	9.4%
8	Liege (LGG)	36,928	12,5%
9	Madrid (MAD)	26,771	0.1%
10	Munich (MUC)	22,493	12.4%

Group 1
Airports welcoming more than 25 million passengers per year
(percentage traffic variation September 2007 versus 2006 and 2005)

Airport	2007v2006 variation %	2007v2005 variation %
LHR	+2.1%	-0.4%
CDG	+6.1%	+11.8%
FRA	+0.9%	+1.5%
MAD	+13.6%	+21.6%
AMS	+3.1%	+6.7%
LGW	+3.8%	+6.7%
MUC	+7.0%	+12.6%
FCO	+12.0%	+18.6%
BCN	+11.1%	+23.3%
wa*	+5.9%	+9.6%

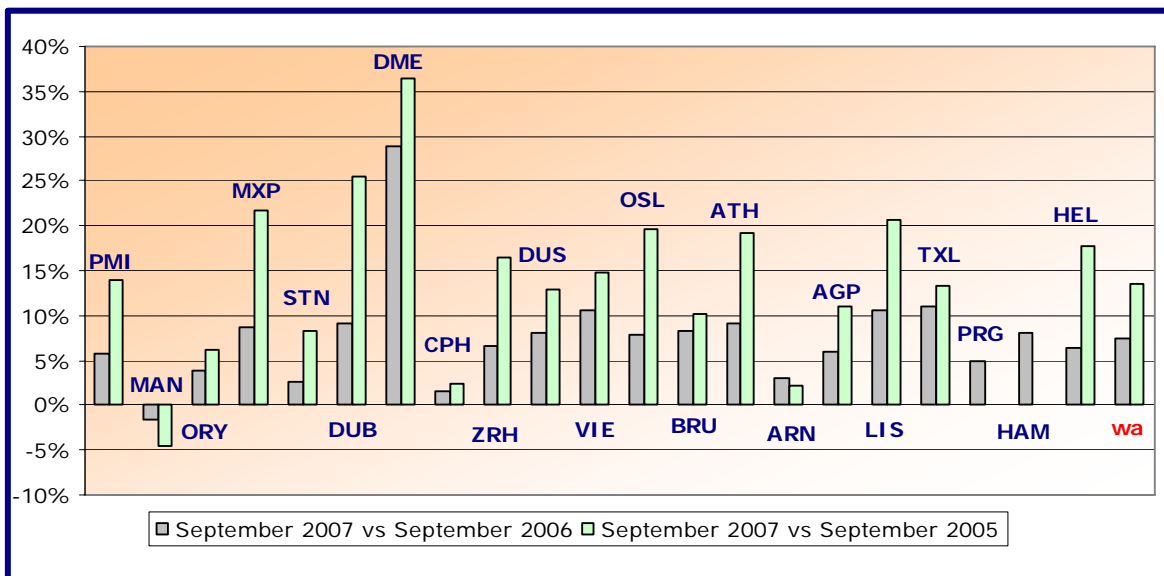
*weighted average=SUM(%change*pax)/SUM(pax)



Group 2
Airports welcoming between 10 and 25 million passengers
per year (percentage traffic variation September 2007 versus 2006 and
2005)

Airport	2007v2006 variation %	2007v2005 variation %
PMI	+5.7%	+14.0%
MAN	-1.5%	-4.5%
ORY	+3.9%	+6.3%
MXP	+8.7%	+21.7%
STN	+2.5%	+8.2%
DUB	+9.2%	+25.5%
DME	+29.0%	+36.4%
CPH	+1.5%	+2.5%
ZRH	+6.6%	+16.4%
DUS	+8.1%	+12.8%
VIE	+10.7%	+14.9%
OSL	+7.8%	+19.5%
BRU	+8.2%	+10.2%
ATH	+9.2%	+19.2%
ARN	+3.1%	+2.3%
AGP	+6.0%	+11.0%
LIS	+10.6%	+20.7%
TXL	+11.0%	+13.3%
PRG	+4.8%	N/A
HAM	+8.1%	N/A
HEL	+6.5%	+17.8%
wa*	+7.1%	+13.1%

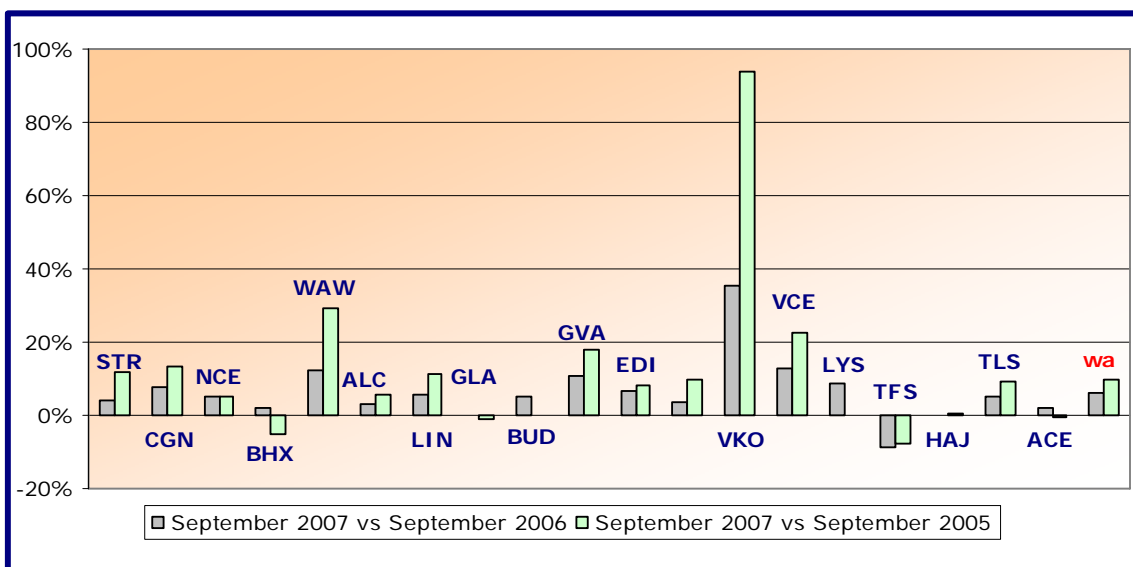
*weighted average=SUM(%change*pax)/SUM(pax)



Group 3
Airports welcoming between 5 and 10 million passengers
per year (percentage traffic variation September 2007 versus 2006 and 2005)

Airport	2007v2006 variation %	2007v2005 variation %
STR	+4.1%	+11.7%
CGN	+7.8%	+13.4%
NCE	+5.2%	+5.0%
BHX	+2.1%	-5.3%
WAW	+12.2%	+29.4%
ALC	+3.2%	+5.9%
LIN	+5.5%	+11.2%
GLA	-0.1%	-1.3%
BUD	+5.2%	N/A
GVA	+10.8%	+18.1%
EDI	+6.5%	+8.4%
LPA	+3.6%	+9.7%
VKO	+35.2%	+94.0%
VCE	+13.1%	+22.7%
LYS	+8.8%	N/A
TFS	-8.9%	-7.6%
HAJ	-0.1%	+0.4%
TLS	+5.1%	+9.4%
ACE	+2.0%	-0.6%
wa*	+6.0%	+9.9%

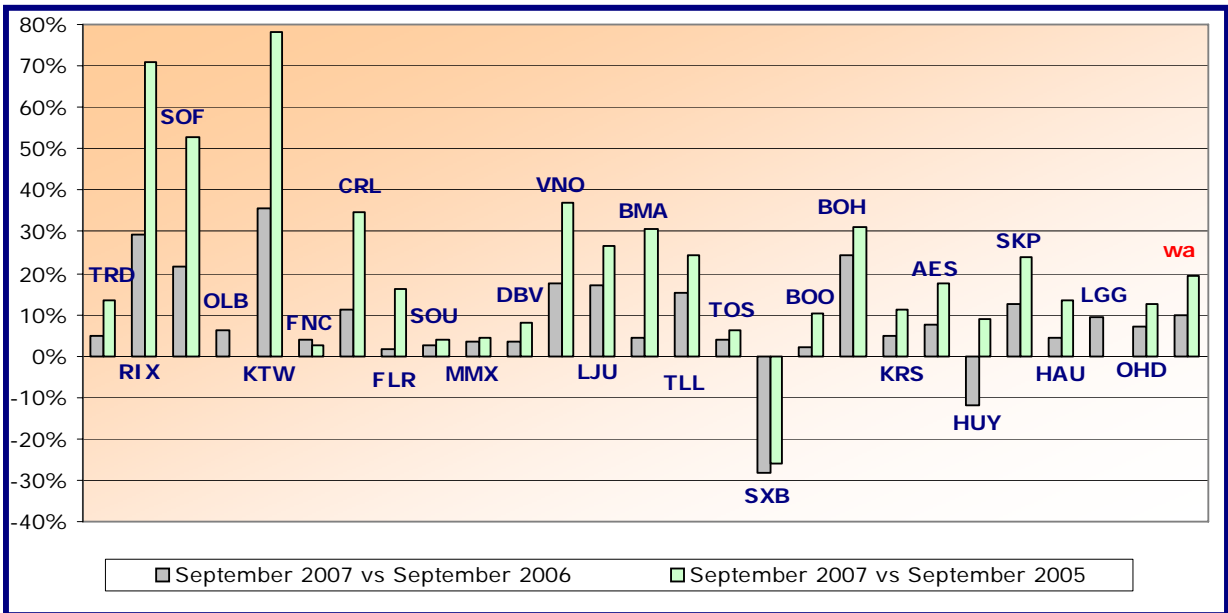
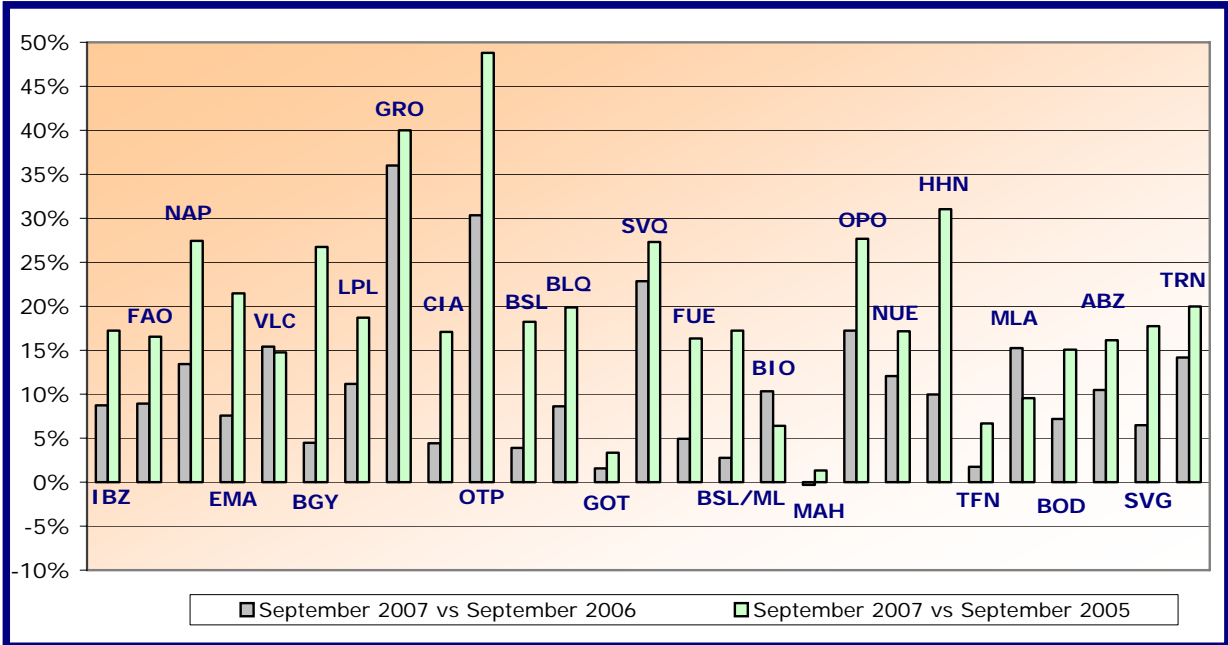
*weighted average=SUM(%change*pax)/SUM(pax)



Group 4
Airports welcoming less than 5 million passengers
per year (percentage traffic variation September 2007 versus 2006 and 2005)

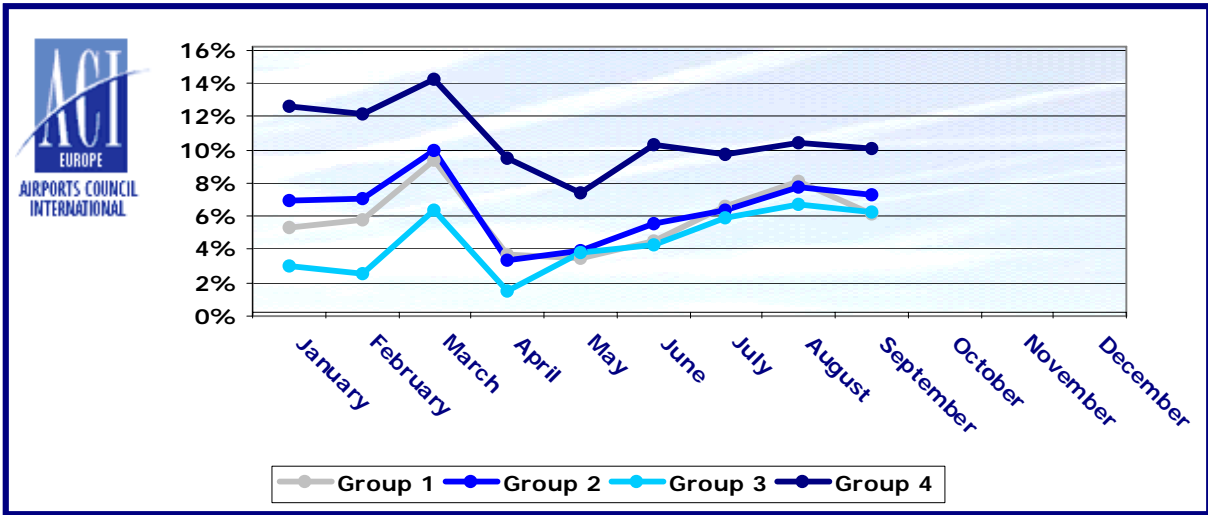
Airport	2007v2006 variation %	2007v2005 variation %
IBZ	+8.7%	+17.2%
FAO	+8.9%	+16.5%
NAP	+13.4%	+27.4%
EMA	+7.6%	+21.5%
VLC	+15.4%	+14.7%
BGY	+4.5%	+26.7%
LPL	+11.2%	+18.7%
GRO	+36.0%	+40.0%
CIA	+4.4%	+17.1%
OTP	+30.3%	+48.8%
BGO	+3.9%	+18.2%
BLQ	+8.6%	+19.9%
GOT	+1.6%	+3.4%
SVQ	+22.8%	+27.3%
FUE	+4.9%	+16.3%
BSL/ML	+2.8%	+17.2%
BIO	+10.3%	+6.4%
MAH	-0.3%	+1.3%
OPO	+17.2%	+27.7%
NUE	+12.1%	+17.1%
HHN	+10.0%	+31.0%
TFN	+1.7%	+6.7%
MLA	+15.2%	+9.5%
BOD	+7.2%	+15.1%
ABZ	+10.5%	+16.1%
SVG	+6.5%	+17.8%
TRN	+14.2%	+20.0%
TRD	+4.8%	+13.3%
RIX	+29.2%	+70.8%
SOF	+21.8%	+52.7%
OLB	+6.1%	N/A
KTW	+35.7%	+78.0%
FNC	+3.8%	+2.6%
CRL	+11.2%	+34.9%
FLR	+1.7%	+16.2%
SOU	+2.6%	+4.1%
MMX	+3.7%	+4.3%
DBV	+3.5%	+8.1%
VNO	+17.6%	+36.9%
LJU	+17.0%	+26.8%
BMA	+4.6%	+30.5%
TLL	+15.4%	+24.2%
TOS	+3.9%	+6.3%
SXB	-28.2%	-25.9%
BOO	+2.1%	+10.5%
BOH	+24.5%	+31.2%
KRS	+4.8%	+11.1%
AES	+7.5%	+17.5%
HUY	-12.1%	+8.9%
SKP	+12.5%	+23.7%
HAU	+4.3%	+13.6%
LGG	+9.3%	+86.6%
OHD	+7.0%	+12.5%
wa*	+9.9%	+19.5%

*weighted average=SUM(%change*pax)/SUM(pax)



Year-to-date airport passenger trends

The graphic illustrates and compares the trends of the different airport Groups 1, 2, 3 and 4 for 2007.



The graphic compares the amount of total commercial passengers 2007 with 2006, 2005, 2004, 2003, 2002 and 2001. The airports included, in this graphic, are: LHR, FRA, CDG, AMS, MAD, LGW, FCO, MUC, BCN, ORY, STN, MAN, MXP, ZRH, CPH, ARN, DUB, OSL, BRU, VIE, DUS, ATH, PMI, AGP, DME, HEL, TXL, LIS, HAM, PRG.

