



Airport Traffic Report

March 2008

European passenger traffic up 5.8% during Q1 2008

The 'ACI EUROPE Airport Traffic Report - March 2008' includes **107 airports** in total. Verona (VRN) is the latest airport to be included in the report.

The overall passenger traffic at European airports increased by +5.8% during Q1 2008 compared with Q1 2007.

The overall **passenger** traffic at European airports increased by **+4.3%** in **March 2008** compared with March 2007. The overall **freight** traffic among European airports increased **+0.5%** in March 2008 when compared with the corresponding month in 2007. The overall figure for **movements** at European airports increased **-0.8%** in March 2008 when compared with March 2007.

Passenger figures for March 2008 indicate that Group 4 airports (airports welcoming less than 5 million passengers per year) had the largest increase in traffic - with an average increase of **+5.8%** when compared with March 2007 - and an average increase of **+17.9%** when compared with March 2006.

Airports welcoming more than 25 million passengers per year (Group 1), airports welcoming between 10 and 25 million passengers (Group 2) and airports welcoming between 5 and 10 million passengers (Group 3) reported an average increase of **+2.5%**, **+5.7%** and **+4.6%** respectively when compared with March 2007. The same comparison of March 2008 with March 2006 demonstrates an average increase of **+12.0%**, **+16.1%** and **+16.0%** respectively.

Examples of airports that experienced the highest increase in passenger traffic per group, when comparing March 2008 with March 2007, include:

- **Group 1 airports** – London Gatwick (**+8.0%**), Madrid (**+6.5%**) and Rome Fiumicino (**5.7%**);
- **Group 2 airports** – Moscow- Domodedovo (**+23.9%**), Geneva (**+15.9%**) and Vienna (**+14.8%**);
- **Group 3 airports** – Moscow-Vnukovo (**+41.9%**), Alicante (**+19.9%**) and Milan/Orio al Serio (**+17.2%**);
- **Group 4 airports** – Katowice (**+49.2%**), Vilnius (**+38.9%**) and Liege (**+34.6%**).

Airports		Passengers				Commercial movements		Freight (metric tonnes)	
		March 2008	2008v 2007 variation %	January – March	2008v 2007 variation %	March 2008	2008v 2007 variation %	March 2008	2008v 2007 variation %
1	London Heathrow (LHR)	5,622,500	-0.7%	15,434,900	0.5%	39,313	-2.2%	119,265	6.2%
2	Paris Roissy (CDG)	4,972,600	3.3%	13,543,500	3.7%	44,981	0.0%	N/A	N/A
3	Madrid (MAD)	4,550,800	6.5%	12,361,600	9.3%	40,845	0.2%	27,172	0.9%
4	Frankfurt (FRA)	4,437,900	-0.2%	12,247,500	3.6%	39,103	-3.9%	186,571	2.1%
5	Amsterdam (AMS)	3,746,600	1.2%	10,108,300	1.8%	34,207	-3.5%	147,001	5.1%
6	London Gatwick (LGW)	2,819,000	8.0%	7,371,200	5.6%	20,683	3.5%	13,605	-18.3%
7	Munich (MUC)	2,791,800	1.2%	7,701,100	6.5%	33,385	-2.2%	22,507	6.5%
8	Rome-Fiumicino (FCO)	2,683,800	5.7%	7,066,000	7.2%	26,799	0.0%	10,672	0.1%
9	Barcelona (BCN)	2,623,600	2.8%	6,944,800	3.2%	27,271	-5.5%	8,794	16.6%
10	Paris Orly (ORY)	2,256,600	-0.1%	6,146,600	-0.1%	19,708	-2.4%	N/A	N/A
11	Milan-Malpensa (MXP)	1,964,100	3.7%	5,399,400	4.8%	21,113	-2.7%	46,409	5.9%
12	Dublin (DUB)	1,962,000	9.4%	5,152,700	8.1%	16,847	6.3%	N/A	N/A
13	London Stansted (STN)	1,824,500	-0.5%	4,825,100	-4.5%	14,662	-6.3%	16,338	-7.2%
14	Zurich (ZRH)	1,810,800	9.6%	4,881,600	10.2%	18,768	3.5%	25,706	7.0%
15	Copenhagen (CPH)	1,791,200	0.7%	4,913,500	5.6%	20,876	-5.0%	N/A	N/A
16	Manchester (MAN)	1,665,900	3.4%	4,421,600	1.5%	15,399	-5.1%	14,335	10.0%
17	Vienna (VIE)	1,621,600	14.8%	4,296,100	16.4%	21,864	9.6%	16,963	-0.9%
18	Oslo (OSL)	1,551,200	-2.1%	4,379,800	6.1%	17,348	-6.0%	5,367	-15.6%
19	Stockholm-Arlanda (ARN)	1,550,600	0.1%	4,271,400	4.8%	17,658	-5.4%	9,239	2.7%
20	Brussels (BRU)	1,479,700	11.3%	3,949,100	15.2%	19,739	0.8%	69,523	6.2%
21	Moscow-Domodedovo (DME)	1,452,800	23.9%	4,081,500	23.6%	14,699	14.3%	11,243	28.4%
22	Düsseldorf (DUS)	1,337,400	-2.2%	3,720,500	4.6%	16,816	-6.1%	4,428	-10.0%
23	Palma de Mallorca (PMI)	1,330,900	3.4%	3,065,600	3.5%	12,097	-1.0%	1,570	-16.6%
24	Geneva (GVA)	1,287,300	15.9%	3,321,500	12.1%	12,533	5.2%	2,677	-0.6%
25	Athens (ATH)	1,191,200	6.2%	3,119,000	5.2%	13,595	-1.1%	9,645	-2.6%
26	Berlin (TXL)	1,167,100	8.7%	3,231,100	17.6%	12,401	2.2%	1,431	-4.0%

Airports		Passengers				Commercial movements		Freight (metric tonnes)	
		March 2008	2008v 2007 variation %	January – March	2008v 2007 variation %	March 2008	2008v 2007 variation %	March 2008	2008v 2007 variation %
27	Helsinki (HEL)	1,165,900	-0.4%	3,190,800	4.0%	15,618	-2.3%	9,170	-18.2%
28	Lisbon (LIS)	1,141,000	12.8%	2,923,300	10.3%	11,467	1.2%	7,495	-6.1%
29	Gran Canaria (LPA)	1,068,500	6.6%	2,891,600	4.4%	10,412	7.2%	2,956	-17.5%
30	Hamburg (HAM)	1,054,800	0.2%	2,841,600	6.2%	N/A	N/A	3,187	-10.1%
31	Malaga (AGP)	1,001,500	2.7%	2,471,100	2.4%	8,821	-0.9%	382	-32.4%
32	Prague (PRG)	983,200	7.0%	2,511,300	7.2%	13,567	-0.8%	4,006	-1.8%
33	Tenerife Sur (TFS)	894,100	4.5%	2,461,400	4.4%	6,132	4.5%	800	-8.2%
34	Milan Linate (LIN)	818,400	0.6%	2,267,100	2.6%	8,304	-4.2%	1,363	-12.0%
35	Alicante (ALC)	780,200	19.9%	1,917,900	18.0%	6,347	16.7%	342	-16.6%
36	Nice (NCE)	779,600	4.7%	2,009,700	5.7%	10,046	3.7%	666	-11.1%
37	Stuttgart (STR)	751,300	-4.6%	2,012,500	-1.8%	9,996	-9.4%	1,796	6.8%
38	Cologne/Bonn (CGN)	739,400	-7.3%	2,046,000	-2.1%	9,641	-16.0%	47,883	-27.0%
39	Birmingham (BHX)	730,600	8.4%	1,942,100	6.0%	8,139	-1.9%	1,177	4.4%
40	Edinburgh (EDI)	723,000	1.3%	1,956,400	4.6%	9,198	-3.1%	1,056	-37.7%
41	Warsaw (WAW)	714,500	7.6%	1,990,500	11.7%	11,174	2.8%	N/A	N/A
42	Budapest (BUD)	645,500	4.4%	1,709,100	7.0%	8,908	-3.8%	5,231	-5.7%
43	Lyon (LYS)	643,400	3.4%	1,772,100	6.3%	10,614	0.8%	2,896	-14.4%
44	Glasgow (GLA)	609,000	-3.9%	1,636,500	-3.9%	6,815	-7.7%	321	-22.5%
45	Moscow-Vnukovo (VKO)	563,200	41.9%	1,523,500	44.0%	10,820	24.2%	1,664	16.3%
46	Venice (VCE)	546,900	8.7%	1,429,900	6.9%	6,049	-7.0%	1,854	4.7%
47	Milan/Orio al Serio (BGY)	541,400	17.2%	1,415,800	15.6%	5,082	10.2%	11,184	-7.6%
48	Valencia (VLC)	540,500	13.7%	1,374,600	14.4%	6,858	3.3%	1203	-7.2%
49	Toulouse (TLS)	535,900	2.3%	1,475,200	2.9%	6,679	-5.3%	4,850	6.6%
50	Lanzarote (ACE)	527,300	6.4%	1,410,600	7.5%	4,695	9.9%	476	-6.0%
51	Marseille (MRS)	517,100	-2.4%	1,456,600	2.4%	7,795	-2.5%	3,525	-3.3%
52	Nottingham East Midlands (EMA)	460,700	11.2%	1,200,000	15.1%	5,730	7.2%	21,486	-16.1%
53	Liverpool (LPL)	455,300	3.8%	1,216,400	3.4%	3,663	-6.6%	333	12.5%

Airports		Passengers				Commercial movements		Freight (metric tonnes)	
		March 2008	2008v 2007 variation %	January – March	2008v 2007 variation %	March 2008	2008v 2007 variation %	March 2008	2008v 2007 variation %
54	Girona (GRO)	444,800	28.4%	1,152,200	40.7%	3,430	33.4%	1	-94.5%
55	Hanover (HAJ)	443,300	3.0%	1,114,100	2.9%	N/A	N/A	1,131	-18.9%
56	Naples (NAP)	424,300	11.9%	1,126,300	11.7%	4,684	2.5%	289	145.9%
57	Fuerteventura (FUE)	421,500	5.4%	1,104,200	4.0%	3,807	6.2%	251	-15.3%
58	Sevilla (SVQ)	418,900	10.6%	1,066,700	11.2%	4,678	12.9%	788	-17.4%
59	Rome-Ciampino(CIA)	409,500	-14.2%	1,109,400	-9.8%	3,012	-17.8%	1,589	-20.1%
60	Bilbao (BIO)	385,500	17.3%	978,700	17.0%	4,658	6.0%	239	-17.0%
61	Porto (OPO)	378,400	31.7%	965,100	24.4%	4,537	11.1%	2,599	-7.3%
62	Bucharest (OTP)	369,200	20.4%	1,058,000	26.0%	5,467	17.5%	1,252	11.0%
63	Nuremberg (NUE)	364,600	-0.6%	1,043,400	6.0%	4,800	-15.1%	930	-11.9%
64	Bergen (BGO)	364,500	-6.6%	1,073,900	3.9%	5,531	-13.4%	202	-26.1%
65	Goteborg (GOT)	359,700	1.0%	1,011,600	3.7%	5,171	-1.7%	4,543	-28.3%
66	Tenerife Norte (TFN)	358,400	0.6%	973,300	1.3%	5,352	6.4%	1,748	-28.4%
67	Turin (TRN)	337,700	7.6%	924,000	5.5%	4,163	-8.5%	228	79.5%
68	Bologna (BLQ)	331,900	-2.0%	N/A	N/A	4,677	-8.6%	1,541	9.5%
69	Faro (FAO)	324,500	-0.1%	703,000	-2.1%	2,432	-2.4%	47	-14.2%
70	Basel-Mulhouse (BSL/ML)	317,900	-5.8%	853,400	1.6%	4,503	-5.8%	3,386	-16.7%
71	Hahn (HHN)	289,300	-7.0%	752,400	-10.8%	2,821	-14.2%	11,044	18.6%
72	Bordeaux (BOD)	278,500	1.2%	737,100	1.2%	4,201	-5.4%	613	3.2%
73	Stavanger (SVG)	277,400	-3.4%	822,400	7.4%	4,021	-13.0%	204	-28.4%
74	Trondheim (TRD)	275,500	-8.7%	807,000	2.4%	3,742	-10.3%	164	-18.9%
75	Riga (RIX)	266,000	20.2%	720,700	21.8%	3,996	20.3%	393	-27.2%
76	Sofia (SOF)	262,400	21.6%	724,200	18.0%	3,377	11.1%	1,302	-16.5%
77	Aberdeen (ABZ)	262,200	-5.8%	737,500	-2.7%	8,162	-7.4%	336	-6.7%
78	Verona (VRD)	241,000	13.0%	645,400	9.3%	2,717	0.0%	681	-7.1%
79	Madeira (FNC)	235,400	19.5%	N/A	N/A	1,992	11.4%	535	-9.7%
80	Malta (MLA)	232,400	24.7%	547,200	22.7%	2,067	11.9%	1,408	-4.9%

Airports		Passengers				Commercial movements		Freight (metric tonnes)	
		March 2008	2008v 2007 variation %	January – March	2008v 2007 variation %	March 2008	2008v 2007 variation %	March 2008	2008v 2007 variation %
81	Bari (BRI)	196,700	9.6%	538,600	12.0%	2,459	13.4%	140	4.3%
82	Glasgow Prestwick (PIK)	192,300	5.2%	N/A	N/A	1,742	2.5%	3,260	5.4%
83	Katowice (KTW)	174,800	49.2%	N/A	N/A	2,123	41.2%	4,143	552.4%
84	Vilnius (VNO)	161,000	38.9%	421,000	37.5%	2,900	28.5%	332	-13.7%
85	Ibiza (IBZ)	155,000	12.7%	363,000	7.8%	2,258	10.0%	251	-8.4%
86	Southampton (SOU)	154,300	5.4%	408,900	3.1%	3,497	-4.6%	27	-3.6%
87	Stockholm-Bromma (BMA)	153,000	-8.1%	450,300	3.1%	2,848	-15.5%	28	133.3%
88	Tallinn (TLL)	152,500	9.2%	403,500	11.4%	2,879	20.5%	3,372	278.6%
89	Florence (FLR)	151,600	6.7%	394,900	5.9%	2,199	2.0%	8	78.6%
90	Malmö (MMX)	145,700	-10.6%	402,800	-8.6%	2,043	-17.1%	2,534	-37.7%
91	Tromsø (TOS)	135,600	-2.5%	382,600	4.9%	2,420	-12.2%	171	-15.7%
92	Bodø (BOO)	123,100	-7.8%	346,100	1.3%	2,829	-15.7%	125	-11.8%
93	Strasbourg (SXB)	106,700	-36.2%	302,700	-33.7%	2,867	-15.6%	35	-46.2%
94	Menorca (MAH)	100,300	5.3%	237,700	5.8%	1,666	3.2%	227	-13.4%
95	Olbia (OLB)	72,700	6.9%	N/A	N/A	818	-4.7%	57	-44.5%
96	Ljubljana (LJU)	71,300	-22.4%	267,000	7.7%	2,680	4.5%	440	-59.6%
97	Brindisi (BDS)	70,800	13.0%	190,300	10.8%	808	28.5%	7	-19.6%
98	Kristiansand (KRS)	68,800	-11.6%	199,200	1.6%	1,550	-10.4%	43	-13.5%
99	Aalesund (AES)	61,600	-3.8%	176,200	2.4%	768	-13.9%	77	-15.9%
100	Skopje (SKP)	49,100	17.1%	130,100	9.6%	789	-0.3%	172	23.1%
101	Dubrovnik (DBV)	41,100	32.8%	81,300	14.6%	458	27.9%	60	-0.1%
102	Haugesund (HAU)	37,700	-17.4%	116,100	-7.0%	452	-39.2%	21	-18.2%
103	Liege (LGG)	14,400	34.6%	35,100	25.8%	2,245	-0.4%	50,515	11.7%
104	Ohrd (OHD)	1,700	-30.7%	N/A	N/A	18	-56.1%	1	-73.5%
105	Bournemouth (BOH)	N/A	N/A	N/A	N/A	N/A	N/A	N/A	N/A
106	Humberside (HUY)	N/A	N/A	N/A	N/A	N/A	N/A	N/A	N/A
107	Charleroi (CRL)	N/A	N/A	N/A	N/A	N/A	N/A	N/A	N/A

----- Preliminary traffic figures -----

Total commercial passengers

International passengers (enplaned + deplaned) + **domestic passengers** (enplaned + deplaned) + **direct transit passengers** (passengers who arrive at and depart from the airport on a flight bearing the same number. They are counted only ONCE).

Commercial movements

Landing or take off of an aircraft operating a scheduled or non scheduled commercial service.

Freight

Freight loaded and unloaded (arriving or departing) at the airport. Freight comprises goods, newspapers, diplomatic bags, parcel post and express parcel.

**The ten largest airports on freight – reporting to
ACI EUROPE**
(metric tonnes)

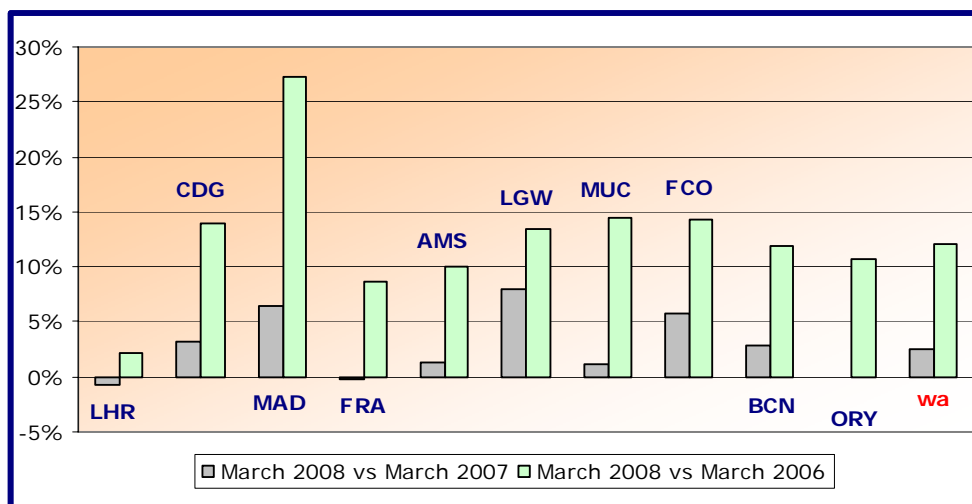
Airports		March 2008	2008v2007 variation %
1	Frankfurt (FRA)	186,571	2,1%
2	Amsterdam (AMS)	147,001	5,1%
3	London Heathrow (LHR)	119,265	6,2%
4	Brussels (BRU)	69,523	6,2%
5	Liege (LGG)	50,515	11,7%
6	Cologne/Bonn (CGN)	47,883	-27,0%
7	Milan-Malpensa (MXP)	46,409	5,9%
8	Madrid (MAD)	27,172	0,9%
9	Zurich (ZRH)	25,706	7,0%
10	Munich (MUC)	22,507	6,5%

Group 1

**Airports welcoming more than 25 million passengers per year
(percentage traffic variation March 2008 versus 2007 and 2006)**

Airport	2008v2007 variation %	2008v2006 variation %
LHR	-0.7%	+2.1%
CDG	+3.3%	+14.0%
MAD	+6.5%	+27.3%
FRA	-0.2%	+8.7%
AMS	+1.2%	+10.0%
LGW	+8.0%	+13.5%
MUC	+1.2%	+14.5%
FCO	+5.7%	+14.3%
BCN	+2.8%	+11.9%
ORY	-0.1%	+10.6%
wa*	+2.5%	+12.0%

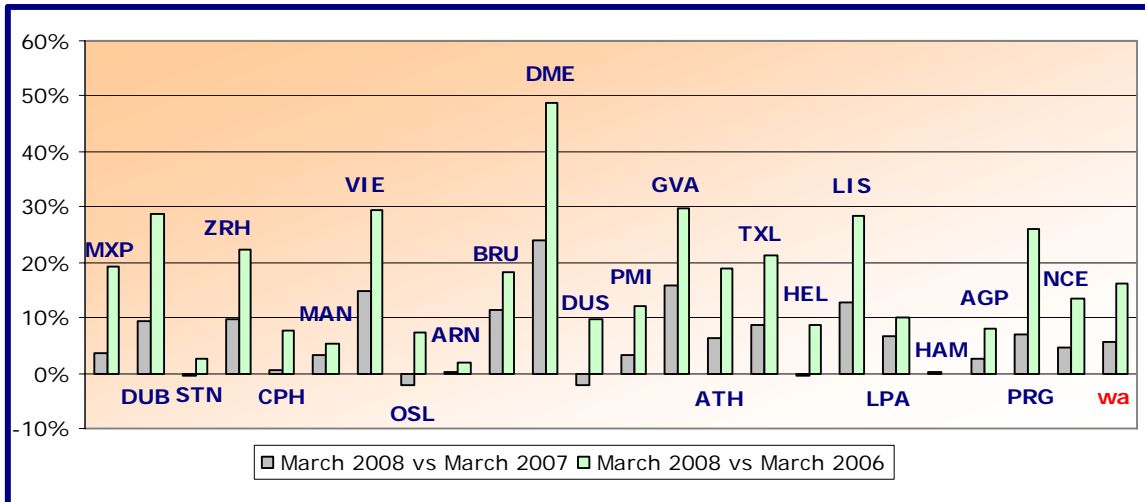
*weighted average=SUM(%change*pax)/SUM(pax)



Group 2
Airports welcoming between 10 and 25 million passengers
per year (percentage traffic variation March 2008 versus 2007 and 2006)

Airport	2008v2007 variation %	2008v2006 variation %
MXP	+3.7%	+19.2%
DUB	+9.4%	+28.7%
STN	-0.5%	+2.4%
ZRH	+9.6%	+22.4%
CPH	+0.7%	+7.8%
MAN	+3.4%	+5.3%
VIE	+14.8%	+29.6%
OSL	-2.1%	+7.4%
ARN	+0.1%	+2.0%
BRU	+11.3%	+18.1%
DME	+23.9%	+48.7%
DUS	-2.2%	+9.8%
PMI	+3.4%	+12.1%
GVA	+15.9%	+29.7%
ATH	+6.2%	+19.0%
TXL	+8.7%	+21.2%
HEL	-0.4%	+8.8%
LIS	+12.8%	+28.4%
LPA	+6.6%	+10.2%
HAM	+0.2%	N/A
AGP	+2.7%	+8.0%
PRG	+7.0%	+26.1%
NCE	+4.7%	+13.4%
wa*	+5.7%	+16.1%

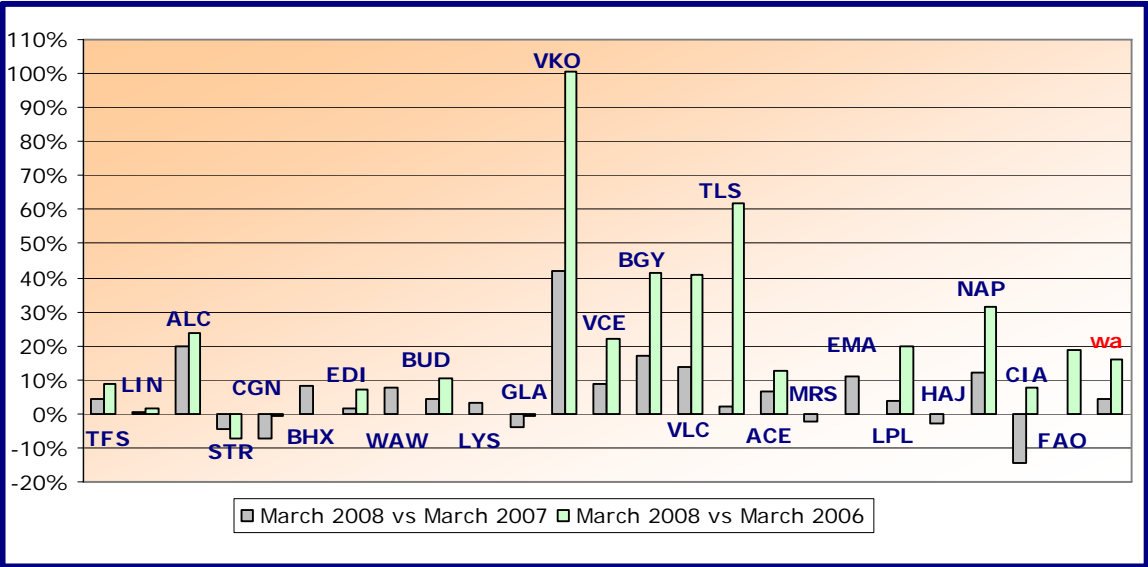
*weighted average=SUM(%change*pax)/SUM(pax)



Group 3
Airports welcoming between 5 and 10 million passengers
per year (percentage traffic variation March 2008 versus 2007 and 2006)

Airport	2008v2007 variation %	2008v2006 variation %
TFS	+4.5%	+8.9%
LIN	+0.6%	+1.6%
ALC	+19.9%	+23.7%
STR	-4.6%	-7.2%
CGN	-7.3%	-0.5%
BHX	+8.4%	N/A
EDI	+1.3%	+6.9%
WAW	+7.6%	N/A
BUD	+4.4%	+10.5%
LYS	+3.4%	N/A
GLA	-3.9%	-0.4%
VKO	+41.9%	+100.3%
VCE	+8.7%	+22.1%
BGY	+17.2%	+41.6%
VLC	+13.7%	+40.7%
TLS	+2.3%	+62.1%
ACE	+6.4%	+12.7%
MRS	-2.4%	N/A
EMA	+11.2%	N/A
LPL	+3.8%	+19.6%
HAJ	-3.0%	N/A
NAP	+11.9%	+31.7%
CIA	-14.2%	+7.7%
FAO	-0.1%	+18.5%
wa*	+4.6%	+16.0%

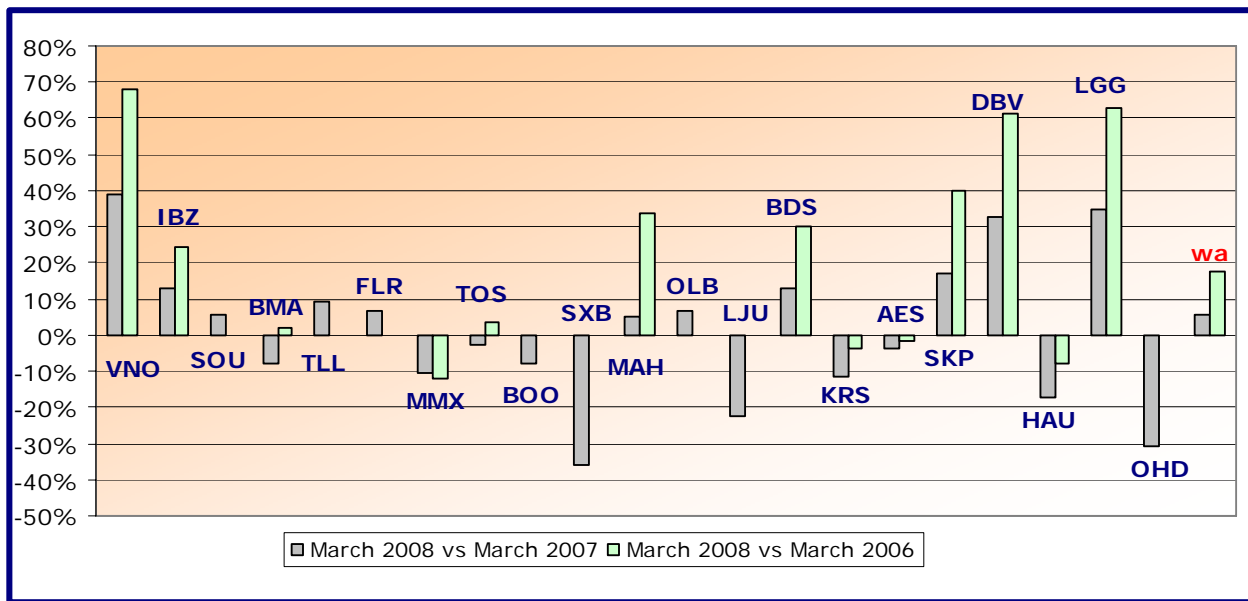
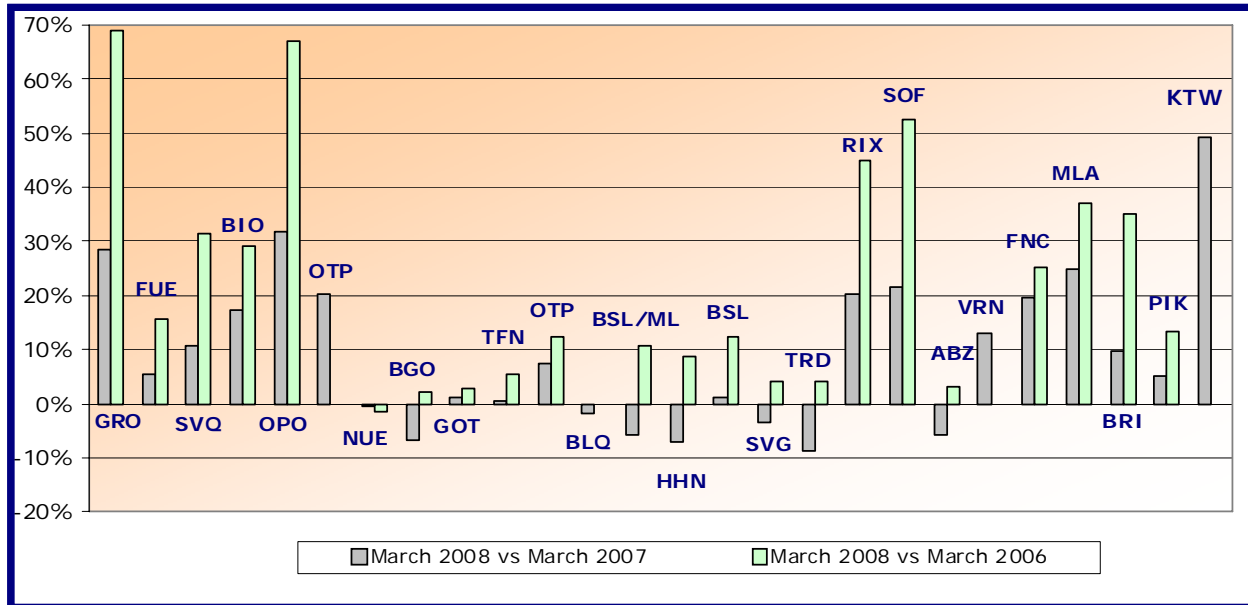
*weighted average=SUM(%change*pax)/SUM(pax)



Group 4
Airports welcoming less than 5 million passengers
per year (percentage traffic variation March 2008 versus 2007 and 2006)

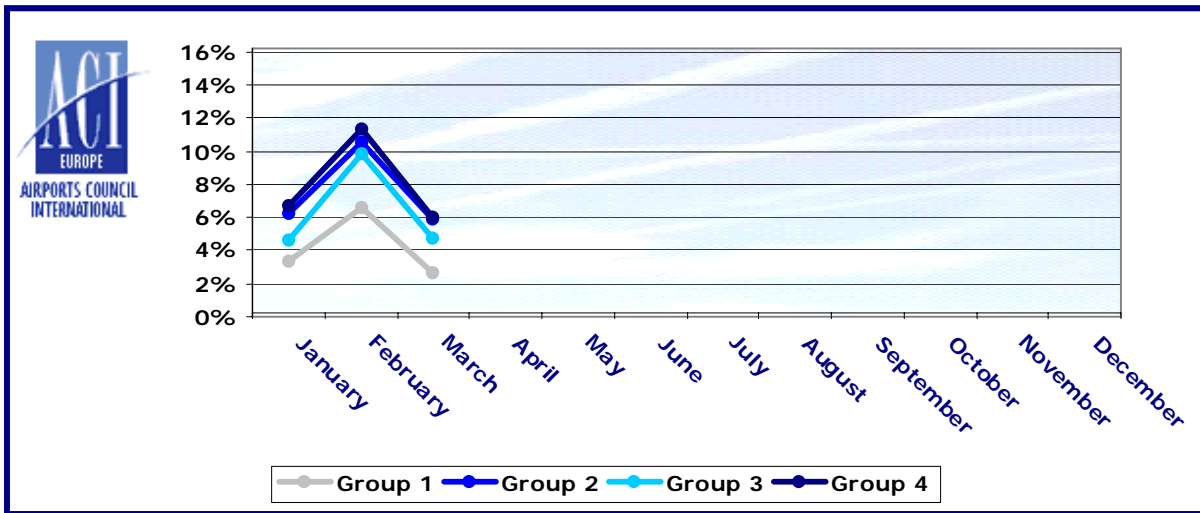
Airport	2008v2007 variation %	2008v2006 variation %
GRO	+28.4%	+69.0%
FUE	+5.4%	+15.8%
SVQ	+10.6%	+31.3%
BIO	+17.3%	+29.2%
OPO	+31.7%	+66.9%
OTP	+20.4%	N/A
NUE	-0.6%	-1.5%
BGO	-6.6%	+2.1%
GOT	+1.0%	+2.9%
TFN	+0.6%	+5.4%
TRN	+7.6%	+12.4%
BLQ	-2.0%	N/A
BSL/ML	-5.8%	+10.7%
HHN	-7.0%	+8.8%
BOD	+1.2%	+12.4%
SVG	-3.4%	+4.1%
TRD	-8.7%	+4.3%
RIX	+20.2%	+45.0%
SOF	+21.6%	+52.5%
ABZ	-5.8%	+3.3%
VRN	+13.0%	N/A
FNC	+19.5%	+25.1%
MLA	+24.7%	+37.2%
BRI	+9.6%	+35.0%
PIK	+5.2%	+13.5%
KTW	+49.2%	N/A
VNO	+38.9%	+68.1%
IBZ	+12.7%	+24.5%
SOU	+5.4%	N/A
BMA	-8.1%	+2.0%
TLL	+9.2%	N/A
FLR	+6.7%	N/A
MMX	-10.6%	-12.0%
TOS	-2.5%	+3.4%
BOO	-7.8%	-0.2%
SXB	-36.2%	N/A
MAH	+5.3%	+33.5%
OLB	+6.9%	N/A
LJU	-22.4%	N/A
BDS	+13.0%	+30.2%
KRS	-11.6%	-3.5%
AES	-3.8%	-1.6%
SKP	+17.1%	+40.2%
DBV	+32.8%	+61.2%
HAU	-17.4%	-7.8%
LGG	+34.6%	+62.8%
OHD	-30.7%	N/A
wa*	+5.8%	+17.9%

*weighted average=SUM(%change*pax)/SUM(pax)



Year-to-date airport passenger trends

The graphic illustrates and compares the trends of the different airport Groups 1, 2, 3 and 4 for 2008.



The graphic compares the amount of total commercial passengers 2008 with 2007. The airports included, in this graphic, are: LHR, FRA, CDG, AMS, MAD, LGW, FCO, MUC, BCN, ORY, STN, MAN, MXP, ZRH, CPH, ARN, DUB, OSL, BRU, VIE, DUS, ATH, PMI, AGP, DME, HEL, TXL, LIS, HAM, PRG.

