



Airport Traffic Report

November 2008

European passenger traffic down -4,0% during November 2008

The '**ACI EUROPE Airport Traffic Report - November 2008**' includes **108 airports** in total.




The overall **passenger** traffic at European airports decreased by **-8,2%** in **November 2008** compared with November 2007. The overall **freight** traffic among European airports decreased **-12,8%** in November 2008 when compared with the corresponding month in 2007. The overall figure for **movements** at European airports decreased **-8,4%** in November 2008 when compared with November 2007.




The accumulated figure for **passenger** traffic **January to November 2008** increased by **0,4%** compared with the corresponding period 2007. The accumulated figure for **freight** traffic during **January to November** decreased by **-2,2%** and **movements** decreased by **-0,1%** during the corresponding period when compared with 2007.




Airports welcoming more than 25 million passengers per year (Group 1), airports welcoming between 10 and 25 million passengers (Group 2), airports welcoming between 5 and 10 million passengers (Group 3) and airports welcoming less than 5 million passengers per year reported an average increase / decrease of **-8,3%**, **-9,1%**, **-9,3%** and **-5,9%** respectively when compared with November 2007. The same comparison of November 2008 with November 2006 demonstrates an average increase of **-2,2%**, **-0,4%**, **-1,8** and **+2,3%** respectively.




Examples of airports that experienced the highest increase in passenger traffic per group, when comparing November 2008 with November 2007, include:

- **Group 2 airports** – Zurich (**+2,6%**);
- **Group 3 airports** – Milan/Orio al Serio (**+12,0%**), Berlin SXF (**+9,4%**), Faro (**+1,8%**) and Birmingham (**+1,6%**);
- **Group 4 airports** – Liege (**+49,5%**), Bournemouth (**+20,5%**), Sofia (**+12,0%**) and Riga (**+8,5%**).

Airport		Passengers		Commercial movements		Freight	
		 November 2008		 November 2008		 November 2008	
LONDON	LHR	4989104	-4,7%	37737	-3,2%	117621	1,0%
PARIS	CDG	4359678	-3,7%	41642	-5,3%	N/A	N/A
FRANKFURT	FRA	3913570	-7,0%	37800	-3,0%	174266	-8,5%
MADRID	MAD	3588177	-15,0%	35611	-12,7%	27630	-6,2%
AMSTERDAM	AMS	3275915	-5,8%	32028	-5,5%	133785	-11,2%
MUNICH	MUC	2573493	-5,2%	32114	-5,8%	19536	-14,7%
ROME	FCO	2322724	-5,8%	24168	-9,0%	10152	-6,9%
LONDON	LGW	1978705	-13,7%	16315	-11,5%	7623	-47,5%
BARCELONA	BCN	1935088	-20,8%	22288	-19,2%	9212	7,5%
PARIS	ORY	1863066	-7,1%	17184	-7,9%	N/A	N/A
ZURICH	ZRH	1628345	2,6%	18070	-1,3%	22271	-4,2%
DUBLIN	DUB	1560199	-8,7%	14397	-7,4%	8885	-11,1%
COPENHAGEN	CPH	1484551	-10,5%	19336	-8,9%	N/A	N/A
OSLO	OSL	1418559	-10,2%	18299	-6,5%	4618	-24,1%
VIENNA	VIE	1407118	-8,4%	20394	-6,3%	16348	-7,1%
STOCKHOLM	ARN	1326863	-12,9%	16677	-10,0%	7760	-2,5%
MOSCOW	DME	1317792	-7,1%	13867	-8,4%	9524	-20,1%
DUSSELDORF	DUS	1304641	-2,3%	16247	-7,4%	5584	21,8%
MANCHESTER	MAN	1288268	-9,0%	12809	-14,4%	11851	-27,7%
BRUSSELS	BRU	1258523	-7,9%	17181	-15,6%	44648	-37,9%
MILAN	MLX	1225024	-29,8%	14323	-31,2%	28836	-32,0%
BERLIN	TXL	1146604	-3,7%	12737	-2,6%	1565	-2,2%
MOSCOW	SVO	1074802	2,1%	12494	-5,2%	9440	-12,1%
ATHENS	ATH	1054695	-3,4%	13308	-2,5%	8215	-11,2%
HELSINKI	HEL	1021031	-2,9%	15253	-2,9%	9957	-14,6%
HAMBURG	HAM	931599	-10,1%	11317	-11,5%	6429	-16,1%
LISBON	LIS	908262	-5,2%	10345	-5,2%	7154	11,7%
GRAN CANARIA	LPA	901495	-3,1%	9273	-3,1%	2781	-17,8%
PALMA DE MALLORCA	PMI	877708	-11,0%	9513	-9,3%	1557	-6,1%
PRAGUE	PRG	802529	-14,8%	12390	-10,1%	3327	-30,0%
MALAGA	AGP	700358	-15,4%	6642	-18,5%	347	-16,8%
TENERIFE SUR	TFS	692655	-11,1%	4619	-15,1%	696	-12,6%
STUTTGART	STR	685765	-8,5%	9623	-9,8%	1431	-16,5%
GENEVA	GVA	681720	-3,0%	9154	-6,1%	2335	-10,6%
COLOGNE	CGN	678615	-10,8%	9313	-8,8%	46352	-8,6%
EDINBURGH	EDI	638700	-8,0%	8526	-9,3%	586	-71,6%
BIRMINGHAM	BHX	620605	1,6%	7465	-6,4%	958	-26,8%
MILAN	MLN	612093	-19,0%	7155	-14,6%	1239	-22,5%
NICE	NCE	610016	-9,6%	7892	-10,8%	659	-14,8%
WARSAW	WAW	593590	-13,7%	9495	-11,1%	2811	-21,7%
ALICANTE	ALC	564936	-7,5%	4906	-10,3%	263	-27,1%
BUDAPEST	BUD	561146	-7,7%	8006	-8,6%	4935	-17,1%
LYON	LYS	556734	-1,7%	9453	-7,3%	2555	-27,9%
GLASGOW	GLA	512941	-16,2%	5932	-14,9%	263	-22,9%
BERLIN	SXF	483265	9,4%	4513	9,3%	438	40,3%
MOSCOW	VKO	477749	-8,3%	9557	-8,2%	1960	-8,2%
TOULOUSE	TLS	477716	-0,6%	6326	-2,4%	4186	-9,9%
MILAN	BGY	465520	12,0%	4509	-5,3%	9436	-23,7%
VENICE	VCE	431542	-12,7%	4985	-13,1%	2537	42,7%
ANTALYA	AYT	416887	7,4%	3657	10,6%	N/A	N/A
LANZAROTE	ACE	405000	-12,4%	3673	-11,4%	408	-19,8%
BERGEN	BGO	393421	-1,0%	6113	-3,7%	218	-40,9%
HANNOVER	HAJ	361584	-12,2%	4873	-12,8%	290	-39,3%
NUREMBERG	NUE	354864	-5,1%	4733	-8,5%	741	-36,7%
FUERTEVENTURA	FUE	345202	-3,3%	3254	-3,0%	197	-27,7%
BUCHAREST	OTP	338665	-6,0%	5508	0,7%	1804	25,7%
LIVERPOOL	LPL	335873	-13,5%	2920	-11,2%	245	-31,0%
GIRONA	GRO	332264	-10,3%	2681	-14,0%	2	-94,1%
ROME	CIA	327343	-13,1%	2454	-15,6%	1428	-24,5%
EAST MIDLANDS	EMA	325446	-12,9%	5010	-4,9%	21803	-10,6%
NAPLES	NAP	323045	-16,0%	3966	-11,1%	86	-56,4%
TENERIFE NORTE	TFN	322652	-2,0%	4864	-0,1%	1764	-16,4%
GOTHENBURG	GOT	317815	-15,7%	4885	-10,8%	4041	-13,2%
VALENCIA	VLC	313333	-31,6%	5311	-19,3%	761	-34,9%
STAVANGER	SVG	300324	-2,8%	4587	-8,6%	268	14,2%
TRONDHEIM	TRD	285611	-7,4%	4168	-2,8%	213	0,1%
OPORTO	OPO	285367	1,3%	4177	-1,1%	2430	-9,6%
BILBAO	BIO	283827	-14,8%	3787	-12,4%	246	-1,5%
SEVILLA	SVQ	277752	-16,8%	3547	-17,5%	364	-34,5%
BOLOGNA	BLQ	276139	-3,2%	4030	-12,7%	2479	44,2%
RIGA	RIX	274270	8,5%	4650	23,7%	443	-7,9%
BASEL	BSL	254968	-9,9%	3997	-9,9%	3225	-12,6%
HAHN	HHN	244569	-1,2%	2688	-7,8%	11151	-12,1%
ABERDEEN	ABZ	240700	-11,5%	7755	-11,9%	269	-18,5%
BORDEAUX	BOD	232344	-9,5%	3571	-10,9%	509	-26,3%
FARO	FAO	228929	1,8%	1931	5,8%	26	-22,0%

Airport	Passengers			Commercial movements		Freight	
		November 2008			November 2008		November 2008
SOFIA	SOF	220554	12,0%	3222	9,6%	1428	12,3%
TURIN	TRN	218883	-14,7%	3533	-10,3%	120	31,9%
STOCKHOLM	BMA	176715	-3,4%	3445	2,5%	18	-40,0%
MALTA	MLA	176262	-8,2%	1715	-7,6%	1463	-2,2%
BARI	BRI	168072	-3,0%	2093	-6,8%	88	-19,5%
FUNCHAL	FNC	163284	-6,0%	1716	-1,1%	498	-8,0%
GLASGOW	PIK	154482	-5,5%	1510	-0,9%	1300	-56,7%
KATOWICE	KTW	153962	3,9%	1676	-1,1%	508	-27,6%
KRAKOW	KRK	153022	-27,9%	2073	-22,7%	170	-22,1%
MALMO	MMX	135405	-9,5%	1832	-16,2%	2056	-46,0%
SOUTHAMPTON	SOU	134700	-9,7%	3194	-11,7%	14	-62,2%
TROMSOE	TOS	132072	1,0%	2540	-6,4%	182	-6,4%
TALLINN	TLL	125244	-11,7%	2183	-25,6%	3107	-15,9%
VILNIUS	VNO	124211	-12,1%	2329	-15,0%	295	-20,9%
BODOE	BOO	116785	-8,8%	3001	-5,5%	139	-11,5%
FLORENCE	FLR	116585	-12,5%	1960	-5,0%	9	12,2%
IBIZA	IBZ	109596	2,0%	1934	11,1%	212	-21,4%
LJUBLJANA	LJU	95676	-7,3%	2672	-0,1%	679	-42,7%
STRASBOURG	SXB	94108	-22,4%	2368	-18,7%	22	-70,3%
MENORCA	MAH	76542	-4,4%	1309	-4,9%	197	-15,7%
KRISTIANSAND	KRS	76436	-0,2%	1763	0,7%	39	-11,3%
BOURNEMOUTH	BOH	65718	20,5%	855	11,3%	1	-88,9%
ALESUND	AES	64622	-1,8%	945	-6,4%	90	-6,3%
BRINDISI	BDS	60322	-10,3%	690	-23,5%	3	-95,4%
SKOPJE	SKP	42183	-1,8%	821	4,3%	160	-37,8%
HAUGESUND	HAU	41388	-12,3%	628	-19,7%	27	0,3%
TOULON	TLN	31369	-17,9%	418	-17,9%	N/A	N/A
DUBROVNIK	DBV	27414	-6,6%	332	0,3%	44	-27,0%
HUMBERSIDE	HUY	26007	3,0%	1062	6,0%	84	-78,6%
LIEGE	LGG	14899	49,5%	2107	-10,3%	43638	-9,7%
MADRID	TOJ	2544	-27,1%	1119	-29,0%	N/A	N/A
OHRID	OHD	1021	-27,1%	20	-9,1%	0	-73,8%

Airport		Passengers		Commercial movements		Freight	
		 January - November 2008		 January - November 2008		 January - November 2008	
LONDON	LHR	61783465	-1,4%	436058	-0,4%	1300359	8,2%
PARIS	CDG	56328233	1,9%	508927	1,8%	N/A	N/A
FRANKFURT	FRA	49710465	-1,0%	438366	-0,9%	1888133	-0,3%
MADRID	MAD	47272413	-1,6%	434111	-2,0%	302300	3,1%
AMSTERDAM	AMS	44258618	-0,4%	397 993	-1,4%	1458907	-0,5%
ROME	FCO	32923260	8,0%	318 156	5,3%	128167	7,4%
MUNICH	MUC	32249057	2,4%	379659	1,0%	227004	-1,4%
LONDON	LGW	32120896	-2,0%	239075	-0,3%	100876	-35,7%
BARCELONA	BCN	28354892	-7,5%	297501	-8,1%	96888	9,1%
PARIS	ORY	24198080	-0,7%	212369	-1,1%	N/A	N/A
PALMA DE MALLORCA	PMI	22049476	-1,4%	182872	-1,9%	19945	-5,9%
DUBLIN	DUB	21944932	1,5%	186233	2,8%	N/A	N/A
LONDON	STN	20949935	-5,5%	165922	-6,9%	185551	-2,9%
ZURICH	ZRH	20443576	7,1%	213976	4,0%	255818	5,6%
COPENHAGEN	CPH	20156983	1,3%	243446	3,3%	N/A	N/A
MANCHESTER	MAN	20139805	-3,9%	179551	-7,1%	133680	-11,8%
MOSCOW	DME	19259909	11,0%	181888	9,8%	119471	11,5%
VIENNA	VIE	18404619	6,4%	244850	5,6%	174457	-1,1%
OSLO	OSL	18124446	2,1%	213122	4,3%	58142	-6,2%
MILAN	MPX	17960342	-18,7%	198689	-18,0%	379113	-11,7%
BRUSSELS	BRU	17385569	4,9%	220137	-0,9%	567948	-14,8%
DUSSELDORF	DUS	17000935	2,1%	200 343	1,4%	65399	22,9%
STOCKHOLM	ARN	16968911	1,9%	198 912	4,9%	93061	-0,9%
ATHENS	ATH	15389115	0,1%	165295	-3,2%	102714	4,0%
HELSINKI	HEL	13502426	1,6%	170016	2,6%	111330	-9,6%
BERLIN	TXL	13441227	9,4%	143205	7,2%	16484	12,1%
LISBON	LIS	12650127	1,7%	129055	0,5%	81642	7,6%
MALAGA	AGP	12179600	-4,9%	106207	-7,0%	4471	-16,9%
PRAGUE	PRG	11855253	2,8%	162660	3,0%	38898	-12,6%
GENEVA	GVA	10552252	6,5%	121618	2,9%	27245	0,3%
NICE	NCE	9771612	0,2%	120382	-0,7%	7006	-9,2%
COLOGNE	CGN	9711904	-0,7%	120123	-7,3%	528885	-19,7%
GRAN CANARIA	LPA	9332845	-0,5%	100152	3,0%	30906	-9,0%
ALICANTE	ALC	9063766	6,1%	74117	3,7%	5737	37,5%
BIRMINGHAM	BHX	9035618	4,5%	96274	-1,6%	11542	-7,2%
WARSAW	WAW	8905459	3,3%	124431	1,8%	31832	-14,3%
MILAN	LIN	8709743	-5,4%	90562	-2,3%	14945	-7,3%
EDINBURGH	EDI	8400378	-0,3%	106312	-0,5%	9681	-48,0%
BUDAPEST	BUD	7924388	-1,2%	103332	-4,8%	56215	-4,8%
GLASGOW	GLA	7713549	-6,7%	81180	-7,1%	3505	-13,4%
TENERIFE SUR	TFS	7578231	-3,4%	53097	-5,0%	7907	-5,6%
VENICE	VCE	6470217	-2,2%	68450	-9,1%	26425	31,8%
BERLIN	SXF	6161623	4,6%	52 676	3,7%	3840	10,0%
MILAN	BGY	5977137	13,1%	55793	6,4%	113685	-7,2%
VALENCIA	VLC	5473466	-0,3%	74913	0,0%	12508	2,4%
EAST MIDLANDS	EMA	5313893	5,4%	65337	9,1%	243161	-4,5%
FARO	FAO	5294401	-0,2%	38313	-0,7%	523	-22,7%
GIRONA	GRO	5158339	15,4%	38664	16,5%	183	-20,1%
LANZAROTE	ACE	5075864	-2,0%	46937	1,5%	5053	-4,3%
IBIZA	IBZ	4531185	-2,5%	49522	-0,7%	3731	-7,9%
BERGEN	BGO	4491139	4,4%	68162	0,7%	2557	-24,6%
ROME	CIA	4388350	-12,0%	31978	-16,1%	18236	-14,6%
OPORTO	OPO	4201092	14,6%	51686	11,4%	29799	0,8%
FUERTEVENTURA	FUE	4141998	-2,4%	38823	0,6%	2532	-12,0%
GOTHENBURG	GOT	4056124	-0,4%	58777	2,6%	45548	-18,3%
BASEL	BSL	4004467	0,5%	53091	0,5%	36039	-10,9%
NUREMBERG	NUE	3927864	0,4%	55042	-6,5%	9448	-14,8%
TENERIFE NORTE	TFN	3902107	3,1%	56835	5,5%	18977	-18,1%
SEVILLA	SVQ	3898034	-2,0%	47129	1,1%	5720	-16,3%
BILBAO	BIO	3896877	-1,4%	49404	-2,6%	2957	0,4%
HAHN	HHN	3673882	-2,1%	35703	-1,4%	115692	14,5%
RIGA	RIX	3415840	17,1%	51118	22,0%	4611	-15,8%
BORDEAUX	BOD	3315472	2,8%	49253	3,1%	7687	17,2%
STAVANGER	SVG	3308975	6,7%	49041	-0,5%	2937	3,4%
TRONDHEIM	TRD	3237519	2,3%	45231	3,7%	2050	-7,6%
TURIN	TRN	3169572	-1,8%	43432	-5,8%	1179	11,5%
ABERDEEN	ABZ	3076520	-3,5%	95307	-2,5%	3816	2,8%

Airport	Passengers		Commercial movements		Freight		
		January - November 2008		January - November 2008		January - November 2008	
STOCKHOLM	BMA	1739504	2,5%	33595	5,4%	293	33,8%
TALLINN	TLL	1702385	6,2%	31992	10,4%	39562	95,9%
MALMO	MMX	1682705	-5,9%	23397	-6,4%	27313	-32,2%
TROMSOE	TOS	1539262	3,1%	28945	-1,7%	2017	-2,1%
BODOE	BOO	1392229	-1,6%	34281	-2,1%	1510	-4,5%
STRASBOURG	SXB	1226915	-24,1%	31010	-8,3%	334	-34,8%
DUBROVNIK	DBV	1169439	4,6%	10699	0,8%	960	23,0%
BRINDISI	BDS	935904	8,0%	10226	18,9%	120	-26,7%
KRISTIANSAND	KRS	844421	3,5%	19207	0,4%	465	-5,6%
ALESUND	AES	755924	5,7%	10300	2,4%	943	0,8%
SKOPJE	SKP	612969	5,4%	9858	1,7%	1929	15,5%
HAUGESUND	HAU	498085	4,1%	7122	-11,6%	289	-7,2%
LIEGE	LGG	382153	18,5%	25 502	1,6%	477520	9,0%
MADRID	TOJ	32161	-5,0%	14139	-9,2%	N/A	N/A

----- Preliminary traffic figures -----

Total commercial passengers

International passengers (enplaned + deplaned) + **domestic passengers** (enplaned + deplaned) + **direct transit passengers** (passengers who arrive at and depart from the airport on a flight bearing the same number. They are counted only ONCE).

Commercial movements

Landing or take off of an aircraft operating a scheduled or non scheduled commercial service.

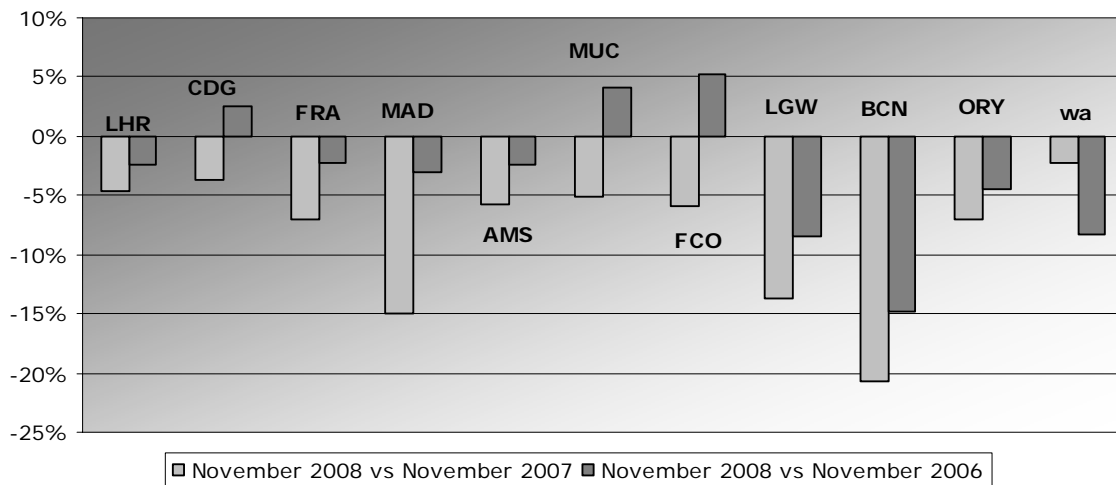
Freight

Freight loaded and unloaded (arriving or departing) at the airport. Freight comprises goods, newspapers, diplomatic bags, parcel post and express parcel.

Group 1
Airports welcoming more than 25 million passengers per year
(percentage traffic variation November 2008 versus 2007 and 2006)

Airport	2008v2007 variation %	2008v2006 variation %
LHR	-4,7%	-2,4%
CDG	-3,7%	2,5%
FRA	-7,0%	-2,2%
MAD	-15,0%	-3,1%
AMS	-5,8%	-2,4%
MUC	-5,2%	4,2%
FCO	-5,8%	5,2%
LGW	-13,7%	-8,4%
BCN	-20,8%	-14,7%
ORY	-7,1%	-4,5%
wa*	-8,3%	-2,2%

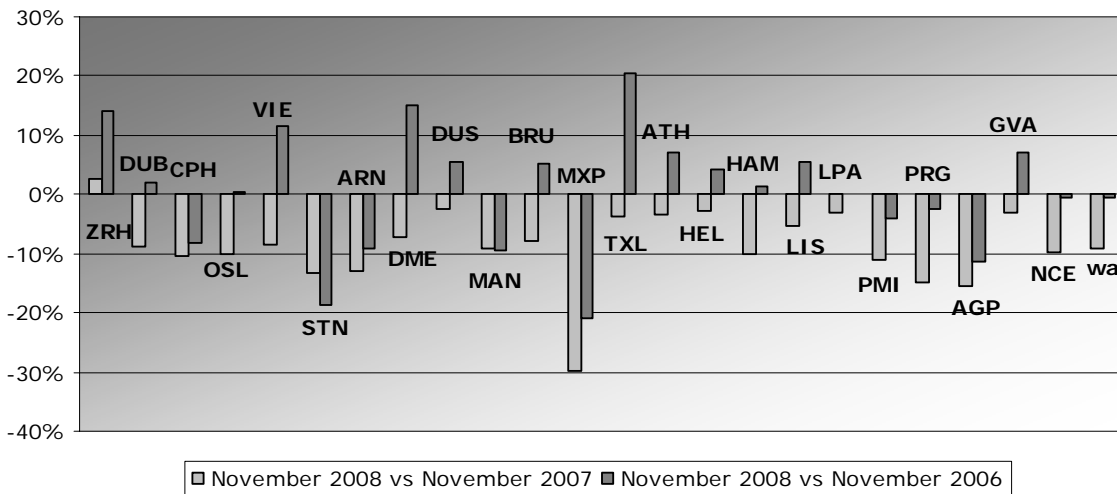
*weighted average = $\text{SUM}(\% \text{change} * \text{pax}) / \text{SUM}(\text{pax})$



Group 2
Airports welcoming between 10 and 25 million passengers
per year (percentage traffic variation November 2008 versus 2007 and 2006)

Airport	2008v2007 variation %	2008v2006 variation %
ZRH	2,6%	14,1%
DUB	-8,7%	2,0%
CPH	-10,5%	-8,1%
OSL	-10,2%	0,3%
VIE	-8,4%	11,5%
STN	-13,2%	-18,7%
ARN	-12,9%	-9,2%
DME	-7,1%	15,0%
DUS	-2,3%	5,4%
MAN	-9,0%	-9,4%
BRU	-7,9%	5,0%
MXP	-29,8%	-21,0%
TXL	-3,7%	20,4%
ATH	-3,4%	7,1%
HEL	-2,9%	4,4%
HAM	-10,1%	1,3%
LIS	-5,2%	5,6%
LPA	-3,1%	0,0%
PMI	-11,0%	-4,1%
PRG	-14,8%	-2,6%
AGP	-15,4%	-11,4%
GVA	-3,0%	7,0%
NCE	-9,6%	-0,6%
wa*	-9,1%	-0,4%

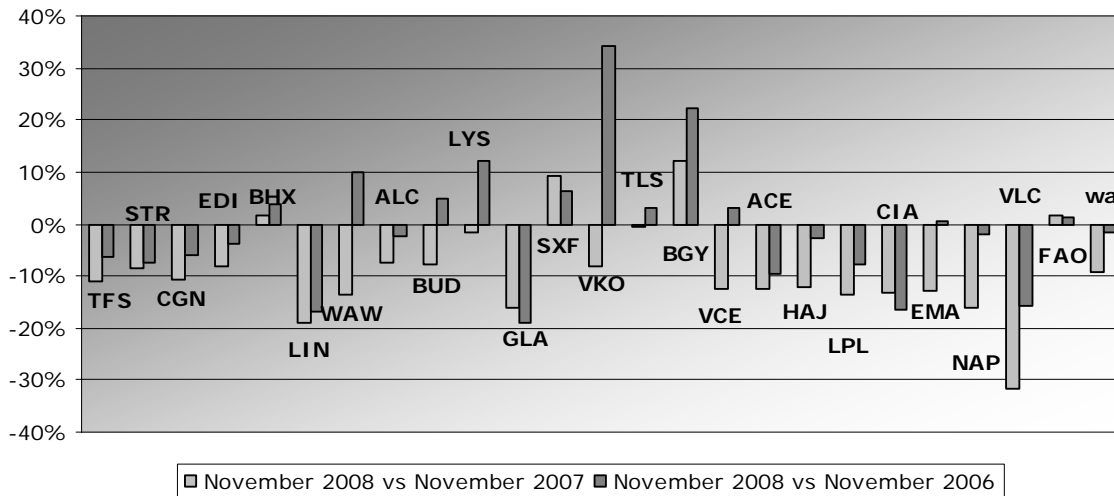
*weighted average = $\text{SUM}(\% \text{change} * \text{pax}) / \text{SUM}(\text{pax})$



Group 3
Airports welcoming between 5 and 10 million passengers
per year (percentage traffic variation November 2008 versus 2007 and 2006)

Airport	2008v2007 variation %	2008v2006 variation %
TFS	-11,1%	-6,2%
STR	-8,5%	-7,6%
CGN	-10,8%	-5,8%
EDI	-8,0%	-3,8%
BHX	1,6%	3,9%
LIN	-19,0%	-16,7%
WAW	-13,7%	9,8%
ALC	-7,5%	-2,5%
BUD	-7,7%	4,7%
LYS	-1,7%	12,3%
GLA	-16,2%	-19,0%
SXF	9,4%	6,2%
VKO	-8,3%	34,4%
TLS	-0,6%	3,2%
BGY	12,0%	22,2%
VCE	-12,7%	3,0%
ACE	-12,4%	-9,7%
HAJ	-12,2%	-2,6%
LPL	-13,5%	-7,8%
CIA	-13,1%	-16,6%
EMA	-12,9%	0,5%
NAP	-16,0%	-1,8%
VLC	-31,6%	-15,8%
FAO	1,8%	1,3%
wa*	-9,3%	-1,8%

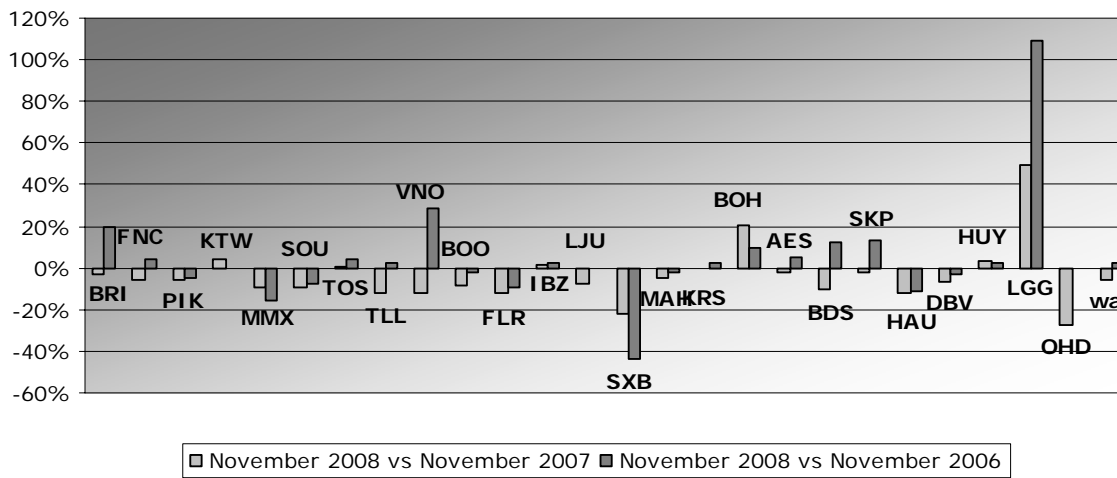
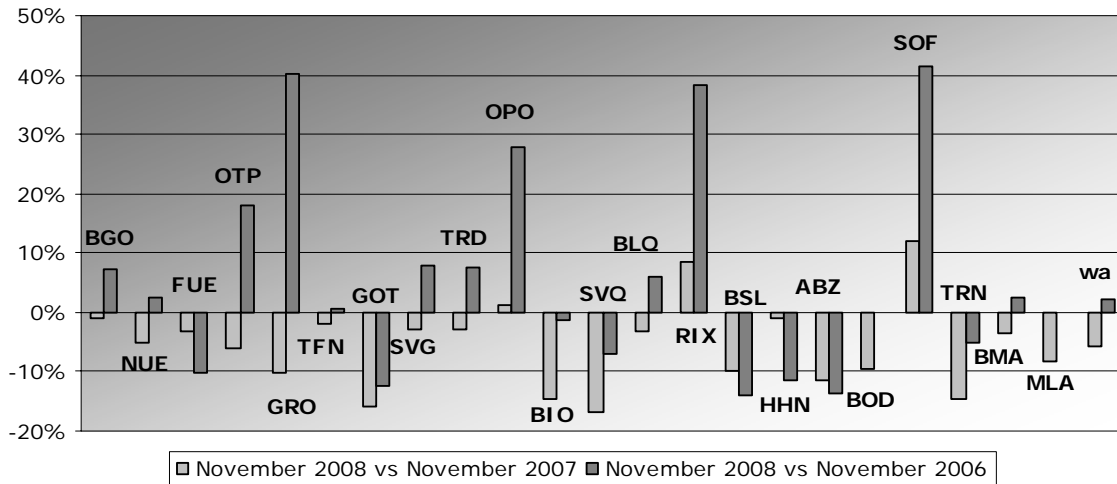
*weighted average = $\text{SUM}(\% \text{change} * \text{pax}) / \text{SUM}(\text{pax})$



Group 4
Airports welcoming less than 5 million passengers
per year (percentage traffic variation November 2008 versus 2007 and 2006)

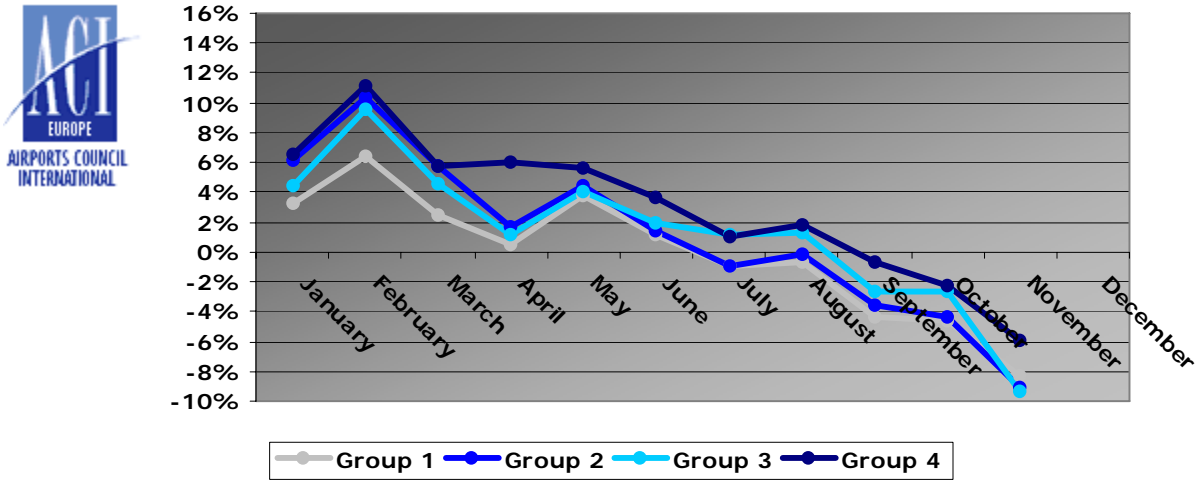
Airport	2008v2007 variation %	2008v2006 variation %
BGO	-1,0%	7,3%
NUE	-5,1%	2,5%
FUE	-3,3%	-10,1%
OTP	-6,0%	18,1%
GRO	-10,3%	40,1%
TFN	-2,0%	0,7%
GOT	-15,7%	-12,5%
SVG	-2,8%	8,0%
TRD	-2,8%	7,4%
OPO	1,3%	27,9%
BIO	-14,8%	-1,4%
SVQ	-16,8%	-7,0%
BLQ	-3,2%	5,9%
RIX	8,5%	38,2%
BSL/ML	-9,9%	-14,0%
HHN	-1,2%	-11,5%
ABZ	-11,5%	-13,6%
BOD	-9,5%	N/A
SOF	12,0%	41,4%
TRN	-14,7%	-5,0%
BMA	-3,4%	2,4%
MLA	-8,2%	N/A
BRI	-3,0%	19,2%
FNC	-6,0%	4,5%
PIK	-5,5%	-4,4%
KTW	3,9%	N/A
MMX	-9,5%	-16,0%
SOU	-9,7%	-7,9%
TOS	1,0%	4,3%
TLL	-11,7%	2,3%
VNO	-12,1%	28,4%
BOO	-8,8%	-2,0%
FLR	-12,5%	-9,7%
IBZ	2,0%	2,1%
LJU	-7,3%	N/A
SXB	-22,4%	-43,9%
MAH	-4,4%	-1,7%
KRS	-0,2%	2,4%
BOH	20,5%	9,8%
AES	-1,8%	4,7%
BDS	-10,3%	12,0%
SKP	-1,8%	13,4%
HAU	-12,3%	-11,0%
DBV	-6,6%	-3,5%
HUY	3,0%	2,7%
LGG	49,5%	108,8%
OHD	-27,1%	N/A
wa*	-5,9%	+2,3%

*weighted average=SUM(%change*pax)/SUM(pax)



Year-to-date airport passenger trends

The graphic illustrates and compares the trends of the different airport Groups 1, 2, 3 and 4 for 2008.



The graphic compares the amount of total commercial passengers 2008 with 2007. The airports included, in this graphic, are: LHR, FRA, CDG, AMS, MAD, LGW, FCO, MUC, BCN, ORY, STN, MAN, MXP, ZRH, CPH, ARN, DUB, OS L, BRU, VIE, DUS, ATH, PMI, AGP, DME, HEL, TXL, LIS, HAM, PRG.

