



# Airport Traffic Report

## December 2007

## European passenger traffic up 6.5% during 2007

The 'ACI EUROPE Airport Traffic Report - December 2007' includes **106 airports** in total.

**The overall passenger traffic at European airports increased by +6.5% in 2007 compared with 2006.**

The overall **passenger** traffic at European airports increased by **+5.9%** in **December 2007** compared with December 2006. The overall **freight** traffic among European airports increased **+3.5%** in December 2007 when compared with the corresponding month in 2006. The overall figure for **movements** at European airports increased **+4.0%** in December 2007 when compared with December 2006.

Passenger figures for December 2007 indicate that Group 2 airports (welcoming between 10 and 25 million passengers per year) had the largest increase in traffic - with an average increase of **+7.2%** when compared with December 2006 - and an average increase of **+14.7%** when compared with December 2005.

Airports welcoming more than 25 million passengers per year (Group 1), airports welcoming between 5 and 10 million passengers (Group 3) and airports welcoming less than 5 million passengers per year (Group 4) reported an average increase of **+4.7%**, **+5.0%** and **+7.1%** respectively when compared with December 2006. The same comparison of December 2007 with December 2005 demonstrates an average increase of **+11.4%**, **+8.4%** and **+18.2%** respectively.

Examples of airports that experienced the highest increase in passenger traffic per group, when comparing December 2007 with December 2006, include:

- **Group 1 airports** – Madrid (**+9.5%**), Munich (**+7.9%**) and Rome Fiumicino (**6.9%**);
- **Group 2 airports** – Berlin (**+23.0%**), Moscow- Domodedovo (**+21.3%**) and Vienna (**+17.5%**);
- **Group 3 airports** – Moscow-Vnukovo (**+42.8%**), Warsaw (**+13.3%**) and Alicante (**+11.9%**);
- **Group 4 airports** – Girona (**+59.8%**), Sofia (**+36.7%**) and Vilnius (**+31.3%**).

Airports		Passengers				Commercial movements		Freight (metric tonnes)	
		December 2007	2007v 2006 variation %	January – December	2007v 2006 variation %	December 2007	2007v 2006 variation %	December 2007	2007v 2006 variation %
1	London Heathrow (LHR)	5,392,100	3.2%	68,068,600	0.8%	37,963	3.1%	112,298	16.8%
2	Paris Roissy (CDG)	4,645,400	5.4%	59,919,400	5.4%	43,954	2.1%	N/A	N/A
3	Madrid (MAD)	4,029,100	9.5%	52,122,200	14.0%	38,801	6.2%	30,545	2.1%
4	Frankfurt (FRA)	3,966,100	3.4%	54,161,900	2.6%	37,273	0.7%	180,589	2.4%
5	Amsterdam (AMS)	3,359,200	2.2%	47,793,600	3.7%	32,299	-0.3%	144,158	5.3%
6	Munich (MUC)	2,459,600	7.9%	33,959,400	10.4%	30,796	3.6%	20,853	5.3%
7	London Gatwick (LGW)	2,429,800	2.7%	35,218,400	3.1%	19,085	3.2%	14,410	-9.0%
8	Rome-Fiumicino (FCO)	2,362,500	6.9%	32,855,500	9.1%	26,033	7.0%	10,847	3.6%
9	Barcelona (BCN)	2,209,700	1.8%	32,793,900	9.3%	25,828	0.7%	8,001	-12.6%
10	Paris Orly (ORY)	2,067,100	0.2%	26,440,700	3.2%	18,222	-1.9%	N/A	N/A
11	Milan-Malpensa (MXP)	1,805,000	12.2%	23,885,300	9.7%	21,298	9.2%	41,808	7.3%
12	Dublin (DUB)	1,672,300	9.1%	23,289,400	9.9%	15,504	11.3%	N/A	N/A
13	London Stansted (STN)	1,613,100	-8.7%	23,777,200	0.4%	13,325	-8.1%	15,426	-3.5%
14	Zurich (ZRH)	1,603,000	7.1%	20,687,000	7.8%	18,034	4.6%	23,626	0.0%
15	Copenhagen (CPH)	1,466,600	3.3%	21,356,100	2.7%	18,346	0.5%	N/A	N/A
16	Vienna (VIE)	1,463,000	17.5%	18,768,500	11.3%	20,741	14.6%	15,399	0.6%
17	Manchester (MAN)	1,438,000	1.6%	22,384,600	-1.6%	14,042	-3.9%	14,207	1.8%
18	Moscow-Domodedovo (DME)	1,401,787	21.3%	18,755,098	22.0%	15,415	19.7%	12,894	20.3%
19	Stockholm-Arlanda (ARN)	1,317,800	4.1%	17,968,000	1.7%	15,525	2.6%	6,535	-19.4%
20	Oslo (OSL)	1,290,700	8.2%	19,044,000	7.8%	15,568	4.4%	5,322	-6.8%
21	Brussels (BRU)	1,259,500	17.3%	17,838,700	7.0%	18,413	10.9%	68,232	11.0%
22	Düsseldorf (DUS)	1,173,900	7.1%	17,831,200	7.5%	15,711	4.8%	4,772	-1.0%
23	Athens (ATH)	1,140,500	8.1%	16,522,700	9.7%	13,628	1.6%	8,867	-4.4%
24	Berlin (TXL)	1,070,200	23.0%	13,357,700	13.1%	11,778	12.3%	1,347	11.4%
25	Helsinki (HEL)	978,200	5.7%	12,956,800	6.7%	13,096	1.7%	10,506	7.5%
26	Gran Canaria (LPA)	961,100	4.5%	10,340,600	0.7%	10,161	5.2%	3,504	-3.3%

Airports		Passengers				Commercial movements		Freight (metric tonnes)	
		December 2007	2007v 2006 variation %	January – December	2007v 2006 variation %	December 2007	2007v 2006 variation %	December 2007	2007v 2006 variation %
27	Lisbon (LIS)	958,070	5.8%	N/A	N/A	11,157	4.0%	6,762	-8.4%
28	Hamburg (HAM)	913,307	9.5%	N/A	N/A	11,206	5.3%	6,275	0.4%
29	Prague (PRG)	898,700	7.6%	12,478,100	7.7%	13,400	7.0%	4,372	-6.3%
30	Geneva (GVA)	896,200	7.2%	10,807,100	9.5%	10,828	6.4%	2,444	-7.2%
31	Palma de Mallorca (PMI)	856,200	3.2%	23,224,000	3.7%	9,564	2.9%	1,630	-7.8%
32	Tenerife Sur (TFS)	765,700	-0.6%	8,611,400	-2.2%	5,839	-1.5%	797	-0.2%
33	Malaga (AGP)	764,400	4.0%	13,576,100	4.0%	8,099	2.0%	432	-6.0%
34	Milan Linate (LIN)	716,700	-2.6%	9,926,500	2.4%	7,750	-2.9%	1,353	-10.1%
35	Cologne/Bonn (CGN)	694,265	1.7%	N/A	N/A	9,228	-7.7%	46,049	-18.7%
36	Stuttgart (STR)	669,999	0.1%	N/A	N/A	9,456	-0.1%	1,558	-11.0%
37	Warsaw (WAW)	648,578	13.3%	9,268,476	14.4%	10,216	6.0%	4,712	5.0%
38	Nice (NCE)	643,700	5.1%	10,399,600	4.5%	8,768	5.3%	684	-15.7%
39	Edinburgh (EDI)	625,824	4.1%	9,049,188	5.1%	8,300	-0.4%	1,493	15.8%
40	Birmingham (BHX)	588,093	2.4%	9,232,198	0.9%	7,413	-2.3%	1,112	-3.6%
41	Alicante (ALC)	567,858	11.9%	9,109,787	2.6%	5,407	8.7%	360	-2.6%
42	Budapest (BUD)	560,100	7.8%	8,580,700	4.0%	8,354	-0.2%	4,419	-12.9%
43	Lyon (LYS)	543,975	10.0%	7,320,952	8.4%	9,565	2.0%	2,445	-12.5%
44	Glasgow (GLA)	528,184	-5.3%	8,812,617	-0.6%	6,223	-8.2%	230	-42.2%
45	Moscow-Vnukovo (VKO)	516,492	42.8%	6,799,678	32.5%	10,684	32.6%	2,366	42.8%
46	Marseille (MRS)	505,965	3.1%	6,962,773	13.8%	7,330	2.2%	3,361	-6.8%
47	Toulouse (TLS)	478,200	1.3%	6,162,288	3.5%	6,056	-1.9%	3,410	-13.9%
48	Milan/Orio al Serio (BGY)	450,722	10.4%	5,737,092	9.4%	4,836	17.2%	11,410	0.6%
49	Lanzarote (ACE)	443,662	2.1%	5,625,242	0.0%	4,388	1.8%	507	0.5%
50	Venice (VCE)	443,314	5.3%	7,059,141	11.5%	5,575	-2.0%	1,627	4.6%
51	Valencia (VLC)	430,205	15.4%	5,922,805	19.4%	6,308	7.8%	1,147	0.3%
52	Liverpool (LPL)	390,207	4.7%	5,520,283	11.0%	3,534	-2.1%	311	-4.6%
53	Naples (NAP)	381,362	12.8%	5,775,838	13.3%	4,394	2.5%	100	-75.3%

Airports		Passengers				Commercial movements		Freight (metric tones)	
		December 2007	2007v 2006 variation %	January – December	2007v 2006 variation %	December 2007	2007v 2006 variation %	December 2007	2007v 2006 variation %
54	<b>Nottingham East Midlands (EMA)</b>	378,218	15.6%	5,422,102	14.5%	5,065	11.6%	22,179	2.1%
55	<b>Rome-Ciampino (CIA)</b>	366,000	-7.0%	5,351,900	9.2%	2,850	-14.8%	1,645	-18.5%
56	<b>Girona (GRO)</b>	361,535	59.8%	4,829,970	34.4%	3,066	78.6%	5	-58.8%
57	<b>Fuerteventura (FUE)</b>	360,814	7.6%	4,604,013	4.3%	3,664	6.0%	249	0.4%
58	<b>Sevilla (SVQ)</b>	348,630	11.7%	4,501,050	16.4%	4,434	19.8%	552	-42.3%
59	<b>Tenerife Norte (TFN)</b>	337,889	0.4%	4,123,550	2.5%	5,056	2.3%	2,000	-9.2%
60	<b>Hanover (HAJ)</b>	328,413	2.5%	N/A	N/A	4,894	4.7%	572	17.9%
61	<b>Nuremberg (NUE)</b>	324,653	9.5%	N/A	N/A	4,656	-3.9%	1,078	8.1%
62	<b>Porto (OPO)</b>	320,895	18.0%	3,986,748	17.2%	4,334	14.1%	2,419	-18.8%
63	<b>Bergen (BGO)</b>	319,900	3.3%	4,619,800	6.0%	5,177	0.8%	221	-2.2%
64	<b>Goteborg (GOT)</b>	311,916	1.0%	4,386,033	1.5%	4,536	-3.5%	4,371	-8.7%
65	<b>Bilbao (BIO)</b>	310,255	10.6%	4,260,048	10.3%	4,149	6.0%	285	8.6%
66	<b>Bologna (BLQ)</b>	285,893	4.0%	N/A	N/A	4,545	2.4%	1,576	-2.5%
67	<b>Basel-Mulhouse (BSL/ML)</b>	279,695	-5.8%	4,262,277	6.3%	4,120	-1.7%	3,540	6.9%
68	<b>Turin (TRN)</b>	271,932	5.6%	3,500,728	7.8%	3,735	2.9%	159	59.2%
69	<b>Hahn (HHN)</b>	259,684	-15.2%	N/A	N/A	2,690	-5.3%	10,670	13.3%
70	<b>Aberdeen (ABZ)</b>	245,300	-2.2%	3,434,265	7.9%	7,721	-2.0%	241	-42.2%
71	<b>Stavanger (SVG)</b>	243,600	9.0%	3,345,700	7.6%	3,889	9.6%	239	-3.2%
72	<b>Riga (RIX)</b>	243,546	22.2%	3,160,945	26.7%	3,598	14.1%	510	-16.3%
73	<b>Trondheim (TRD)</b>	241,000	5.6%	3,406,300	7.5%	3,576	4.9%	168	8.4%
74	<b>Bordeaux (BOD)</b>	239,030	-0.6%	3,463,205	6.4%	3,682	-2.3%	563	-28.4%
75	<b>Sofia (SOF)</b>	233,093	36.7%	2,697,788	24.6%	3,144	37.8%	1,185	5.1%
76	<b>Charleroi (CRL)</b>	203,959	19.9%	2,458,980	13.5%	1,410	23.0%	3	299.1%
77	<b>Madeira (FNC)</b>	176,530	10.7%	2,418,489	2.4%	1,853	0.5%	550	-7.1%
78	<b>Bari (BRI)</b>	172,264	12.8%	2,385,427	20.1%	2,239	21.8%	133	247.9%
79	<b>Faro (FAO)</b>	164,573	-2.1%	5,472,495	7.5%	1,674	-7.1%	29	-20.4%

Airports		Passengers				Commercial movements		Freight (metric tonnes)	
		December 2007	2007v 2006 variation %	January - December	2007v 2006 variation %	December 2007	2007v 2006 variation %	December 2007	2007v 2006 variation %
80	Malta (MLA)	157,845	10.4%	N/A	N/A	1,762	3.4%	1,570	-12.8%
81	Stockholm-Bromma (BMA)	138,100	3.1%	1,835,300	10.3%	2,528	-5.2%	22	340.0%
82	Southampton (SOU)	133,400	2.7%	1,967,052	2.8%	3,169	1.7%	32	23.1%
83	Tallinn (TLL)	127,686	16.3%	1,707,241	11.4%	2,465	25.8%	1,696	133.9%
84	Vilnius (VNO)	126,858	31.3%	N/A	N/A	2,548	24.3%	376	-6.5%
85	Malmo (MMX)	123,685	-13.0%	1,911,722	-1.4%	1,800	-10.8%	3,034	-13.4%
86	Katowice (KTW)	121,172	20.9%	N/A	N/A	1,461	8.0%	656	0.5%
87	Florence (FLR)	119,530	-0.7%	N/A	N/A	2,025	2.6%	7	6.3%
88	Tromsø (TOS)	112,982	5.8%	1,606,226	3.1%	2,311	2.3%	175	-1.9%
89	Bodo (BOO)	104,644	3.9%	1,386,092	5.7%	2,676	-3.0%	131	-1.8%
90	Strasbourg (SXB)	117,615	-31.0%	1,733,050	-14.8%	2,643	-14.0%	34	-35.8%
91	Ibiza (IBZ)	101,181	-0.5%	4,746,918	6.8%	1,740	1.1%	255	1.8%
92	Ljubljana (LJU)	94,949	20.3%	N/A	N/A	2,526	12.4%	1,013	18.2%
93	Brindisi (BDS)	73,636	19.5%	940,037	13.8%	900	42.9%	12	-32.1%
94	Menorca (MAH)	71,555	-2.8%	2,771,997	3.2%	1,375	-0.6%	231	-10.3%
95	Bournemouth (BOH)	66,222	-8.8%	N/A	N/A	845	-6.2%	2	-99.5%
96	Olbia (OLB)	65,413	-4.4%	N/A	N/A	797	9.5%	48	-42.9%
97	Kristiansand (KRS)	60,400	3.0%	876,281	6.7%	1,442	0.5%	39	-6.8%
98	Aalesund (AES)	55,145	4.0%	769,281	5.0%	801	2.3%	78	-0.5%
99	Skopje (SKP)	49,081	7.9%	630,464	14.5%	839	8.7%	293	90.1%
100	Haugesund (HAU)	36,251	-4.9%	514,451	4.8%	626	-3.2%	23	-5.5%
101	Dubrovnik (DBV)	24,721	4.6%	N/A	N/A	315	1.9%	65	24.4%
102	Humberside (HUY)	23,195	1.0%	N/A	N/A	894	6.0%	323	53.0%
103	Liege (LGG)	10,310	-5.9%	332,830	8.0%	2,219	4.2%	51,691	22.2%
104	Ohrid (OHD)	1,894	-53.5%	44,856	-11.0%	34	-57.0%	17	323.9%
105	Bucharest (OTP)	N/A	N/A	N/A	N/A	N/A	N/A	N/A	N/A
106	Glasgow Prestwick (PIK)	N/A	N/A	N/A	N/A	N/A	N/A	N/A	N/A

----- Preliminary traffic figures -----

### **Total commercial passengers**

**International passengers** (enplaned + deplaned) + **domestic passengers** (enplaned + deplaned) + **direct transit passengers** (passengers who arrive at and depart from the airport on a flight bearing the same number. They are counted only ONCE).

### **Commercial movements**

Landing or take off of an aircraft operating a scheduled or non scheduled commercial service.

### **Freight**

Freight loaded and unloaded (arriving or departing) at the airport. Freight comprises goods, newspapers, diplomatic bags, parcel post and express parcel.

**The ten largest airports on freight – reporting to  
ACI EUROPE**  
(metric tonnes)

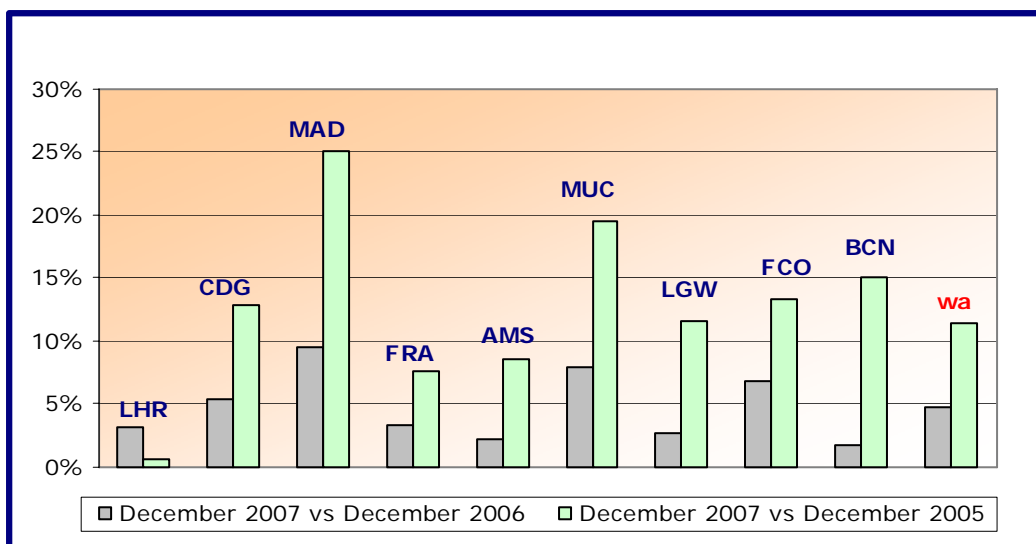
Airports		December 2007	2007v2006 variation %
1	Frankfurt (FRA)	180,589	2.4%
2	Amsterdam (AMS)	144,158	5.3%
3	London Heathrow (LHR)	112,298	16.8%
4	Brussels (BRU)	68,232	11.0%
5	Liege (LGG)	51,691	22.2%
6	Cologne/Bonn (CGN)	46,049	-18.7%
7	Milan-Malpensa (MXP)	41,808	7.3%
8	Madrid (MAD)	30,545	2.1%
9	Zurich (ZRH)	23,626	0.0%
10	Nottingham East Midlands (EMA)	22,179	2.1%

**Group 1**

**Airports welcoming more than 25 million passengers per year  
(percentage traffic variation December 2007 versus 2006 and 2005)**

Airport	2007v2006 variation %	2007v2005 variation %
LHR	+3.2%	+0.7%
CDG	+5.4%	+12.8%
MAD	+9.5%	+25.1%
FRA	+3.4%	+7.7%
AMS	+2.2%	+8.6%
MUC	+7.9%	+19.6%
LGW	+2.7%	+11.6%
FCO	+6.9%	+13.3%
BCN	+1.8%	+15.0%
<b>wa*</b>	<b>+4.7%</b>	<b>+11.4%</b>

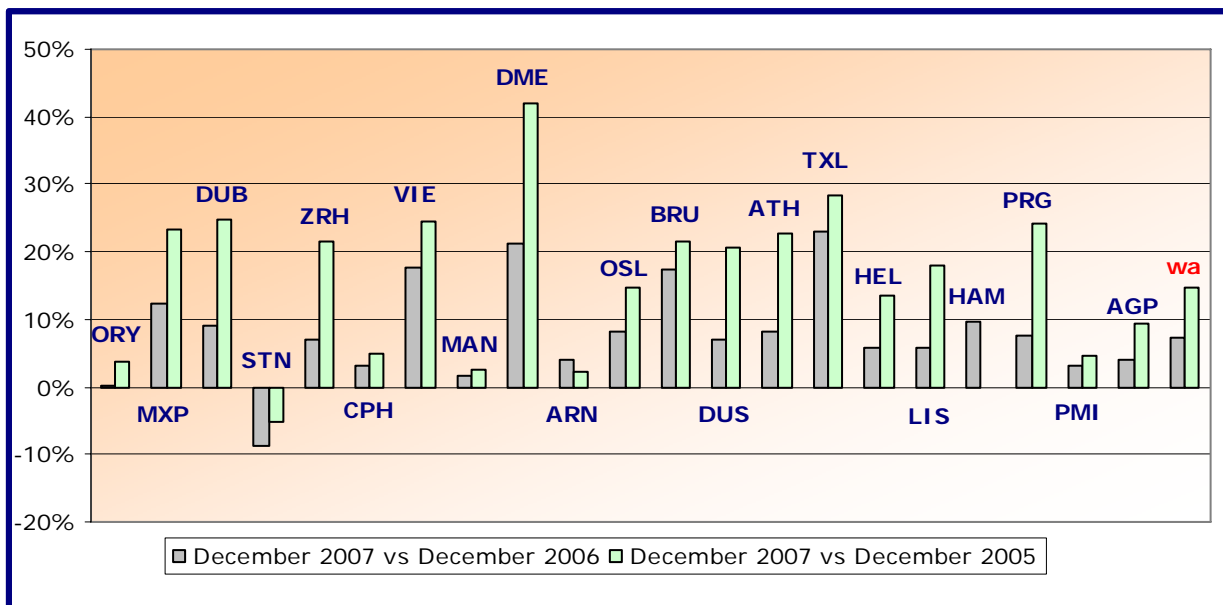
\*weighted average=SUM(%change\*pax)/SUM(pax)



**Group 2**  
**Airports welcoming between 10 and 25 million passengers**  
**per year (percentage traffic variation December 2007 versus 2006 and**  
**2005)**

Airport	2007v2006 variation %	2007v2005 variation %
ORY	+0.2%	+3.8%
MXP	+12.2%	+23.3%
DUB	+9.1%	+24.8%
STN	-8.7%	-5.1%
ZRH	+7.1%	+21.5%
CPH	+3.3%	+4.8%
VIE	+17.5%	+24.5%
MAN	+1.6%	+2.6%
DME	+21.3%	+41.9%
ARN	+4.1%	+2.1%
OSL	+8.2%	+14.8%
BRU	+17.3%	+21.4%
DUS	+7.1%	+20.8%
ATH	+8.1%	+22.7%
TXL	+23.0%	+28.5%
HEL	+5.7%	+13.6%
LIS	+5.8%	+18.0%
HAM	+9.5%	N/A
PRG	+7.6%	+24.3%
PMI	+3.2%	+4.6%
AGP	+4.0%	+9.4%
<b>wa*</b>	<b>+7.2%</b>	<b>+14.7%</b>

\*weighted average=SUM(%change\*pax)/SUM(pax)

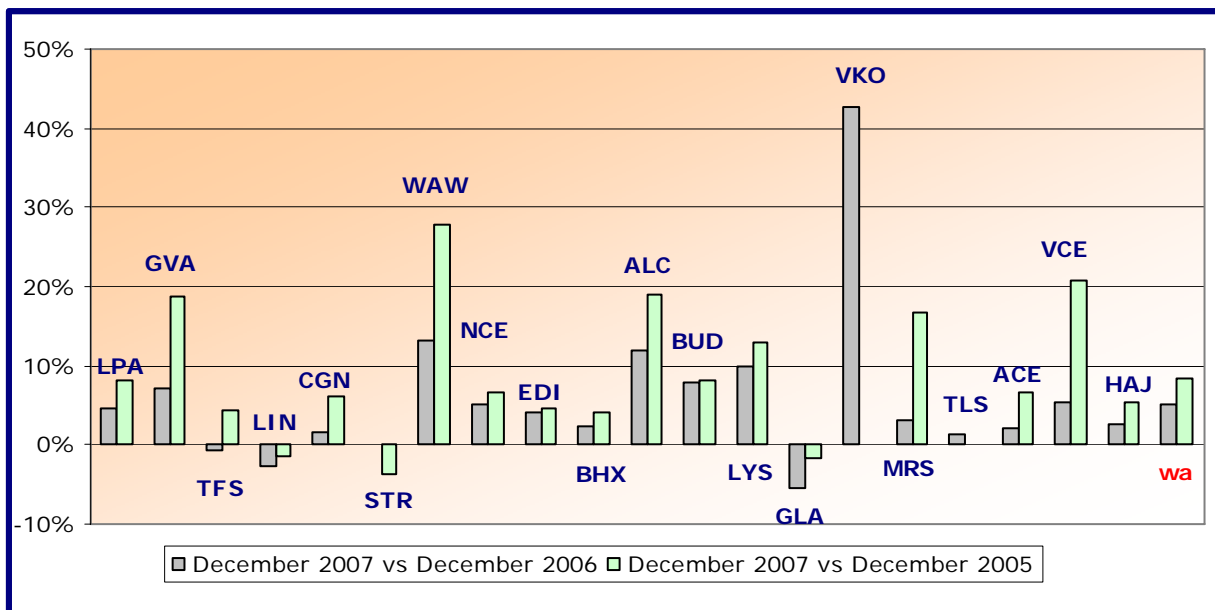


### Group 3

Airports welcoming between 5 and 10 million passengers per year (percentage traffic variation December 2007 versus 2006 and 2005)

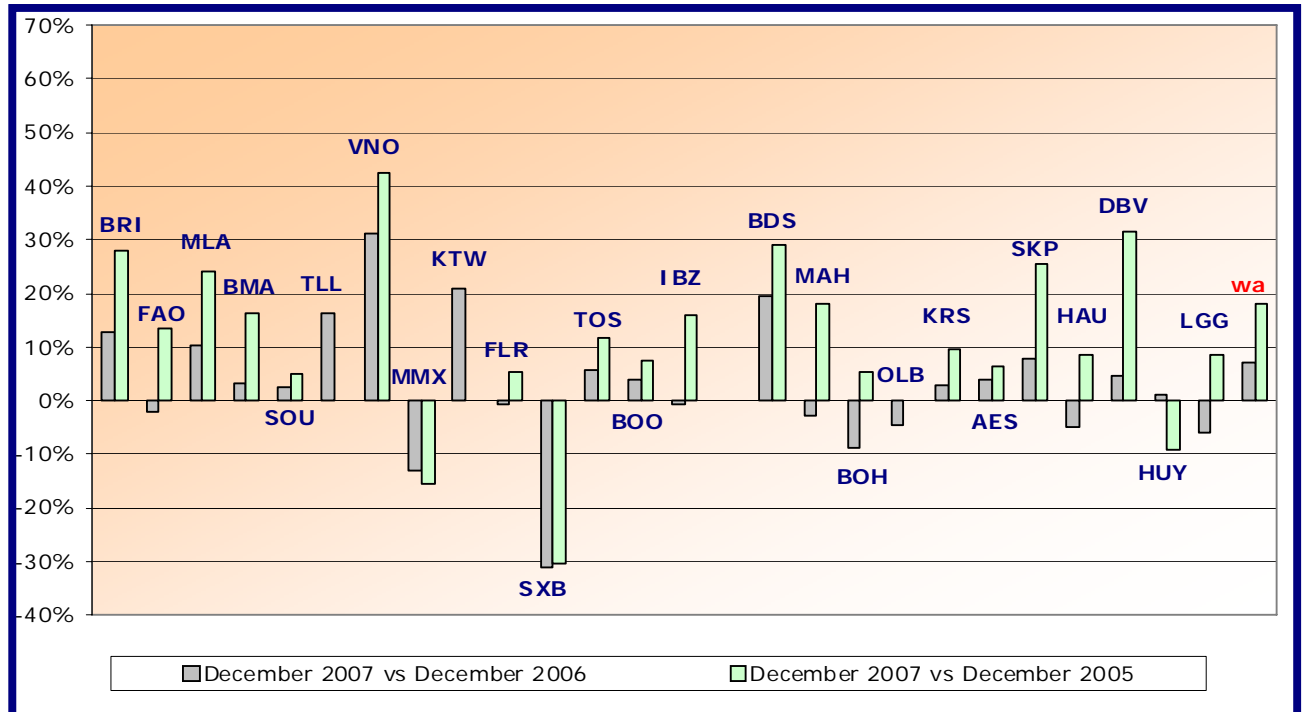
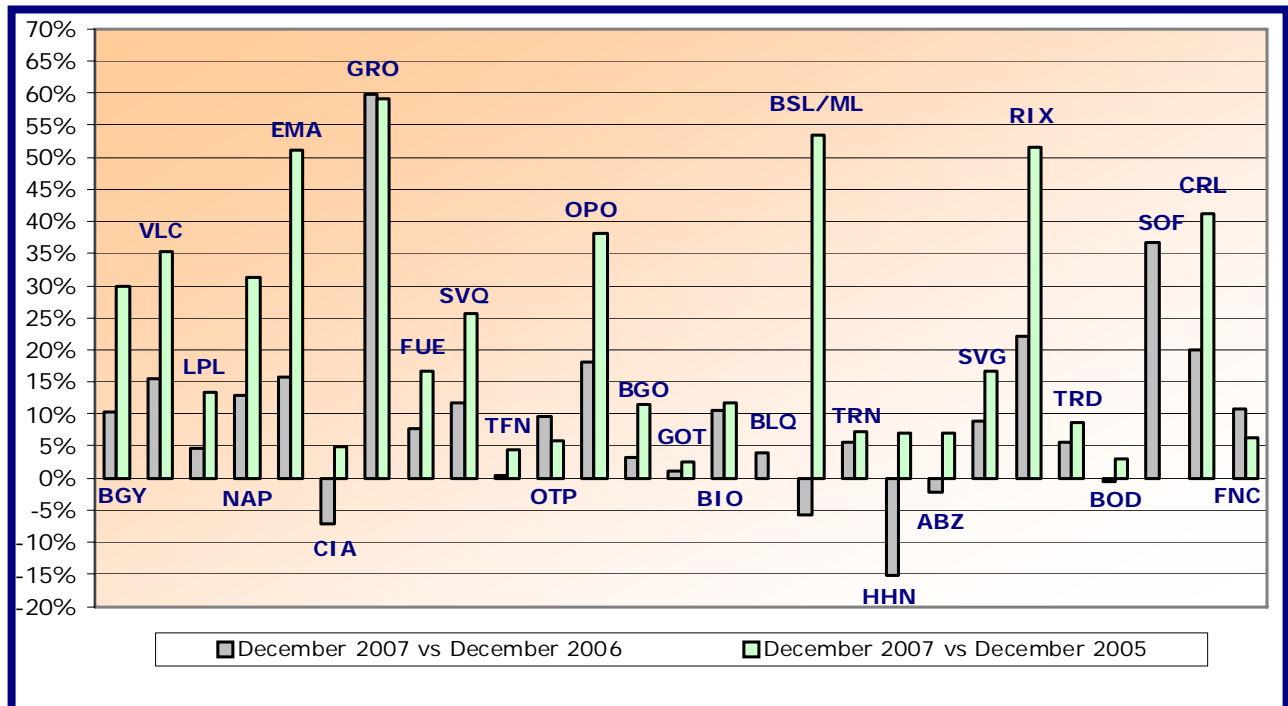
Airport	2007v2006 variation %	2007v2005 variation %
LPA	+4.5%	+8.2%
GVA	+7.2%	+18.7%
TFS	-0.6%	+4.4%
LIN	-2.6%	-1.5%
CGN	+1.7%	+6.1%
STR	+0.1%	-3.8%
WAW	+13.3%	+27.7%
NCE	+5.1%	+6.6%
EDI	+4.1%	+4.6%
BHX	+2.4%	+4.1%
ALC	+11.9%	+18.9%
BUD	+7.8%	+8.2%
LYS	+10.0%	+13.0%
GLA	-5.3%	-1.8%
VKO	+42.8%	N/A
MRS	+3.1%	+16.8%
TLS	+1.3%	N/A
ACE	+2.1%	+6.6%
VCE	+5.3%	+20.7%
HAJ	+2.5%	+5.4%
<b>wa*</b>	<b>+5.0%</b>	<b>+8.4%</b>

\*weighted average =  $\text{SUM}(\% \text{change} * \text{pax}) / \text{SUM}(\text{pax})$



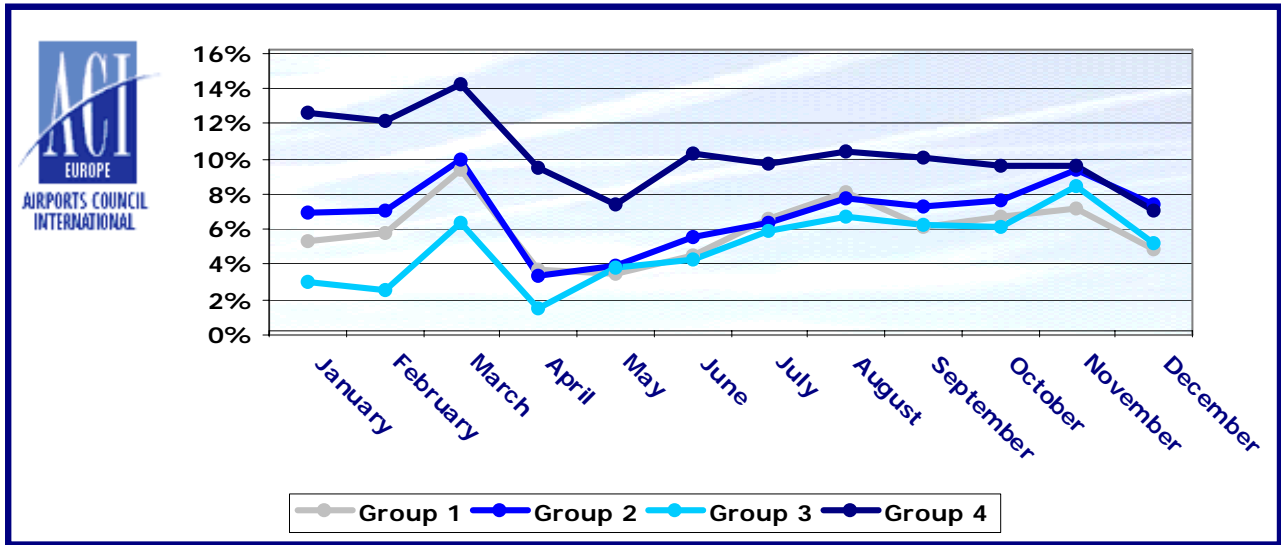
Group 4		
Airports welcoming less than 5 million passengers		
per year (percentage traffic variation December 2007 versus 2006 and 2005)		
Airport	2007v2006 variation %	2007v2005 variation %
BGY	+10.4%	29.8%
VLC	+15.4%	35.2%
LPL	+4.7%	13.5%
NAP	+12.8%	31.2%
EMA	+15.6%	51.0%
CIA	-7.0%	4.9%
GRO	+59.8%	59.0%
FUE	+7.6%	16.8%
SVQ	+11.7%	25.7%
TFN	+0.4%	4.3%
NUE	+9.5%	5.9%
OPO	+18.0%	38.0%
BGO	+3.3%	11.5%
GOT	+1.0%	2.6%
BIO	+10.6%	11.8%
BLQ	+4.0%	N/A
BSL/ML	-5.8%	53.5%
TRN	+5.6%	7.3%
HHN	-15.2%	7.0%
ABZ	-2.2%	7.0%
SVG	+9.0%	16.7%
RIX	+22.2%	51.7%
TRD	+5.6%	8.8%
BOD	-0.6%	3.0%
SOF	+36.7%	N/A
CRL	+19.9%	41.3%
FNC	+10.7%	6.3%
BRI	+12.8%	28.0%
FAO	-2.1%	13.3%
MLA	+10.4%	24.0%
BMA	+3.1%	16.4%
SOU	+2.7%	4.9%
TLL	+16.3%	N/A
VNO	+31.3%	42.4%
MMX	-13.0%	-15.6%
KTW	+20.9%	76.1%
FLR	-0.7%	5.2%
SXB	-31.0%	-30.3%
TOS	+5.8%	11.6%
BOO	+3.9%	7.4%
IBZ	-0.5%	16.0%
LJU	+20.3%	N/A
BDS	+19.5%	28.9%
MAH	-2.8%	18.2%
BOH	-8.8%	5.5%
OLB	-4.4%	N/A
KRS	+3.0%	9.6%
AES	+4.0%	6.3%
SKP	+7.9%	25.4%
HAU	-4.9%	8.7%
DBV	+4.6%	31.7%
HUY	+1.0%	-9.3%
LGG	-5.9%	8.7%
OHD	-53.5%	-50.2%
<b>wa*</b>	<b>+7.1%</b>	<b>+18.2%</b>

\*weighted average=SUM(%change\*pax)/SUM(pax)



## Year-to-date airport passenger trends

The graphic illustrates and compares the trends of the different airport Groups 1, 2, 3 and 4 for 2007.



The graphic compares the amount of total commercial passengers 2007 with 2006, 2005, 2004, 2003, 2002 and 2001. The airports included, in this graphic, are: **LHR, FRA, CDG, AMS, MAD, LGW, FCO, MUC, BCN, ORY, STN, MAN, MXP, ZRH, CPH, ARN, DUB, OSL, BRU, VIE, DUS, ATH, PMI, AGP, DME, HEL, TXL, LIS, HAM, PRG.**

