



# **Airport Traffic Report**

## **June 2008**

## European passenger traffic up 3.9% during first half of 2008

The 'ACI EUROPE Airport Traffic Report - June 2008' includes **107 airports** in total. Berlin (SXF) and Plovdn (PDV) are the latest airports to be included in the report.

**During the first half of 2008 passenger traffic increased by +3.9% compared with the corresponding period in 2007.**

The overall **passenger** traffic at European airports increased by **+1.6%** in **June 2008** compared with June 2007. The overall **freight** traffic among European airports decreased **-1.5%** in June 2008 when compared with the corresponding month in 2007. The overall figure for **movements** at European airports increased **1.2%** in June 2008 when compared with June 2007.

Passenger figures for June 2008 indicate that Group 4 airports (airports welcoming less than 5 million passengers per year) had the largest increase in traffic - with an average increase of **+3.6%** when compared with June 2007 - and an average increase of **+15.1%** when compared with June 2006.

Airports welcoming more than 25 million passengers per year (Group 1), airports welcoming between 10 and 25 million passengers (Group 2) and airports welcoming between 5 and 10 million passengers (Group 3) reported an average increase of **+1.1%**, **+1.4%** and **+1.9%** respectively when compared with June 2007. The same comparison of June 2008 with June 2006 demonstrates an average increase of **+5.4%**, **+7.7%** and **+6.7%** respectively.

Examples of airports that experienced the highest increase in passenger traffic per group, when comparing June 2008 with June 2007, include:

- **Group 1 airports** – Rome Fiumicino (**+12.6%**), Munich (**+4.3%**), Amsterdam (**+3.6%**) and Paris Charles de Gaulle (**2.8%**);
- **Group 2 airports** – Moscow- Domodedovo (**+15.2%**), Berlin Tegel (**+9.9%**), Prague (**+7.6%**) and Vienna (**+7.4%**);
- **Group 3 airports** – Moscow-Vnukovo (**+19.7%**), Milan/Orio al Serio (**+17.4%**), Lyon (**+11.0%**) and Berlin Schönefeld (**+5.6%**);
- **Group 4 airports** – Vilnius (**+22.8%**), Liege (**+21.1%**), Sofia (**+20.7%**) and Porto (**+20.2%**).

Airports		Passengers				Commercial movements		Freight (metric tonnes)	
		June 2008	2008v 2007 variation %	January – June	2008v 2007 variation %	June 2008	2008v 2007 variation %	June 2008	2008v 2007 variation %
1	<b>London Heathrow</b> (LHR)	5,970,400	-1.1%	32,536,400	-0.5%	40,195	0.6%	120,964	8.1%
2	<b>Paris Roissy</b> (CDG)	5,471,600	2.8%	29,593,900	3.7%	47,838	3.1%	169,570	1.3%
3	<b>Frankfurt</b> (FRA)	4,807,100	-0.5%	26,262,800	2.2%	40,958	-0.1%	175,502	0.8%
4	<b>Madrid</b> (MAD)	4,500,500	-0.3%	25,705,300	4.9%	40,845	0.2%	29,114	7.8%
5	<b>Amsterdam</b> (AMS)	4,402,600	3.6%	22,838,000	2.0%	38,202	0.4%	131,934	-2.6%
6	<b>Rome-Fiumicino</b> (FCO)	3,390,500	12.6%	16,892,800	10.7%	31,152	9.0%	13,472	16.1%
7	<b>London Gatwick</b> (LGW)	3,323,400	-1.2%	16,401,900	2.0%	23,911	1.5%	7,682	-45.4%
8	<b>Munich</b> (MUC)	3,166,300	4.3%	17,004,900	6.0%	36,153	2.3%	21,225	-0.3%
9	<b>Barcelona</b> (BCN)	2,805,200	-7.3%	15,099,900	-1.9%	28,600	-7.2%	9,474	13.6%
10	<b>Palma de Mallorca</b> (PMI)	2,723,600	-2.5%	9,838,400	0.8%	21,128	-2.1%	2,142	1.4%
11	<b>Paris Orly</b> (ORY)	2,349,300	-0.3%	13,064,900	0.8%	19,861	-1.1%	7,600	3.3%
12	<b>Dublin</b> (DUB)	2,260,000	2.2%	11,398,400	5.1%	17,887	2.6%	9,021	-2.5%
13	<b>Manchester</b> (MAN)	2,153,800	-3.6%	10,158,200	-0.9%	18,144	-5.8%	12,605	-9.6%
14	<b>Moscow-Domodedovo</b> (DME)	2,124,200	15.2%	9,654,100	22.3%	19,003	13.8%	10,657	8.4%
15	<b>Copenhagen</b> (CPH)	2,096,600	2.6%	10,748,900	5.3%	24,054	5.3%	N/A	N/A
16	<b>London Stansted</b> (STN)	2,080,400	-5.7%	10,791,700	-4.7%	15,981	-6.6%	16,558	-6.5%
17	<b>Oslo</b> (OSL)	1,915,800	3.9%	9,724,800	6.9%	21,384	5.4%	5,850	1.1%
18	<b>Zurich</b> (ZRH)	1,905,700	6.2%	10,574,500	9.3%	20,006	5.0%	23,963	8.2%
19	<b>Vienna</b> (VIE)	1,844,200	7.4%	9,658,400	12.8%	23,427	6.9%	15,813	-3.4%
20	<b>Düsseldorf</b> (DUS)	1,769,700	4.8%	8,632,800	5.6%	19,592	3.7%	7,142	43.3%
21	<b>Stockholm-Arlanda</b> (ARN)	1,745,900	4.1%	9,323,500	6.0%	18,874	6.7%	8,924	-0.3%
22	<b>Brussels</b> (BRU)	1,724,000	5.4%	9,000,100	10.5%	21,129	-0.1%	48,196	-21.3%
23	<b>Milan-Malpensa</b> (MXP)	1,646,000	-22.2%	9,866,800	-11.9%	17,567	-22.8%	36,438	-9.1%
24	<b>Athens</b> (ATH)	1,611,300	2.0%	7,569,000	2.0%	16,102	-2.2%	9,694	2.1%
25	<b>Helsinki</b> (HEL)	1,529,900	-1.5%	6,953,000	2.7%	15,600	1.0%	10,829	-2.4%
26	<b>Malaga</b> (AGP)	1,288,100	-4.0%	6,096,200	-1.7%	10,647	-7.8%	436	-16.1%

Airports		Passengers				Commercial movements		Freight (metric tonnes)	
		June 2008	2008v 2007 variation %	January – June	2008v 2007 variation %	June 2008	2008v 2007 variation %	June 2008	2008v 2007 variation %
27	<b>Berlin</b> (TXL)	1,276,600	9.9%	7,053,900	15.6%	13,579	9.7%	1,385	7.1%
28	<b>Prague</b> (PRG)	1,272,700	7.6%	5,933,600	6.3%	16,572	6.0%	3,712	-9.7%
29	<b>Lisbon</b> (LIS)	1,195,400	4.4%	6,391,900	4.9%	12,127	1.4%	8,995	19.6%
30	<b>Hamburg</b> (HAM)	1,152,700	2.5%	6,258,700	5.5%	N/A	N/A	3,009	-7.4%
31	<b>Nice</b> (NCE)	1,060,900	0.5%	4,971,200	2.6%	12,062	-1.6%	724	7.4%
32	<b>Cologne/Bonn</b> (CGN)	1,029,800	5.1%	4,870,900	-0.2%	12,164	-4.4%	48,816	-21.6%
33	<b>Stuttgart</b> (STR)	941,800	-4.0%	4,714,100	-1.4%	N/A	N/A	2,566	9.9%
34	<b>Warsaw</b> (WAW)	940,800	5.5%	N/A	N/A	11,923	2.2%	3,161	-24.7%
35	<b>Birmingham</b> (BHX)	937,300	2.8%	4,469,600	5.3%	9,582	-0.6%	1,001	-11.5%
36	<b>Alicante</b> (ALC)	929,200	3.2%	4,560,000	11.6%	7,434	0.6%	385	2.6%
37	<b>Geneva</b> (GVA)	917,400	6.9%	6,056,200	9.7%	11,090	7.1%	2,668	-0.5%
38	<b>Milan Linate</b> (LIN)	894,200	-3.3%	4,853,600	-0.4%	8,552	-1.2%	1,465	-5.7%
39	<b>Edinburgh</b> (EDI)	859,800	1.5%	4,351,200	2.4%	10,202	2.2%	784	-38.8%
40	<b>Moscow- Vnukovo</b> (VKO)	831,400	19.7%	3,683,000	31.8%	13,500	16.8%	2,151	22.6%
41	<b>Glasgow</b> (GLA)	829,800	-5.3%	3,851,700	-4.7%	8,169	-4.3%	281	-29.2%
42	<b>Budapest</b> (BUD)	799,100	-1.7%	3,914,300	1.7%	9,927	-6.1%	5,485	2.1%
43	<b>Lyon</b> (LYS)	734,500	11.0%	3,902,000	9.5%	11,157	0.9%	2,820	-15.4%
44	<b>Gran Canaria</b> (LPA)	731,900	3.6%	5,175,300	2.3%	8,348	9.1%	2,631	-4.6%
45	<b>Ibiza</b> (IBZ)	683,400	-1.6%	1,652,600	0.8%	6,588	1.8%	408	-10.4%
46	<b>Venice</b> (VCE)	666,000	-2.5%	3,319,800	2.0%	6,666	-10.1%	3,125	61.5%
47	<b>Marseille</b> (MRS)	665,400	1.7%	3,320,200	1.5%	8,475	-2.0%	3,917	3.7%
48	<b>Faro</b> (FAO)	637,400	-1.2%	2,377,400	-0.1%	4,424	-2.3%	61	-6.1%
49	<b>Toulouse</b> (TLS)	609,300	3.2%	3,203,000	4.3%	7,385	1.8%	4,302	-5.0%
50	<b>Milan/Orio al Serio</b> (BGY)	607,000	17.4%	3,132,400	15.4%	5,396	7.7%	10,275	-10.1%
51	<b>Berlin</b> (SXF)	604,100	5.6%	3,033,800	0.9%	5,137	4.5%	366	-0.2%
52	<b>Nottingham East Midlands</b> (EMA)	563,500	4.8%	2,749,300	10.7%	6,263	9.0%	22,475	-7.7%
53	<b>Naples</b> (NAP)	554,600	3.8%	2,725,800	5.4%	5,494	2.2%	115	-55.0%

Airports		Passengers				Commercial movements		Freight (metric tonnes)	
		June 2008	2008v 2007 variation %	January – June	2008v 2007 variation %	June 2008	2008v 2007 variation %	June 2008	2008v 2007 variation %
54	<b>Hanover</b> (HAJ)	538,300	3.1%	2,624,600	2.8%	6,443	1.4%	767	97.7%
55	<b>Tenerife Sur</b> (TFS)	536,600	-5.5%	4,288,500	2.4%	4,002	-5.8%	700	1.5%
56	<b>Girona</b> (GRO)	530,500	13.8%	2,652,500	25.6%	3,863	13.0%	115	615.9%
57	<b>Valencia</b> (VLC)	523,100	-2.0%	2,903,100	5.3%	7,258	-2.4%	1,585	31.5%
58	<b>Liverpool</b> (LPL)	487,200	-4.1	N/A	N/A	3,851	-7.6	306	6.3
59	<b>Bergen</b> (BGO)	463,500	4.4%	2,325,000	3.9%	6,882	2.0%	237	-9.3%
60	<b>Lanzarote</b> (ACE)	440,500	4.9%	2,711,800	3.7%	4,178	11.4%	570	33.2%
61	<b>Basel-Mulhouse</b> (BSL/ML)	432,600	4.7%	2,050,900	2.2%	5,517	7.7%	3,406	-18.2%
62	<b>Verona</b> (VRD)	426,200	3.3%	1,631,100	6.3%	3,945	-4.6%	498	-28.1%
63	<b>Bologna</b> (BLO)	421,600	0.7%	N/A	N/A	5,200	-7.1%	2,343	68.3%
64	<b>Goteborg</b> (GOT)	420,400	-1.5%	2,198,300	3.2%	5,734	3.1%	4,064	-27.4%
65	<b>Rome-Ciampino</b> (CIA)	413,400	-12.2%	2,338,600	-13.1%	2,919	-17.1%	1,713	-12.6%
66	<b>Bilbao</b> (BIO)	398,000	0.6%	2,105,900	6.6%	4,789	-2.5%	336	23.8%
67	<b>Porto</b> (OPO)	397,300	20.2%	2,125,500	20.5%	4,892	16.3%	3,094	13.5%
68	<b>Sevilla</b> (SVQ)	388,600	4.8%	2,268,400	7.1%	4,549	6.8%	475	-22.2%
69	<b>Hahn</b> (HHN)	376,000	1.7%	1,824,400	-5.8%	3,518	0.3%	12,178	26.4%
70	<b>Tenerife Norte</b> (TFN)	373,300	10.9%	2,056,700	2.5%	5,160	13.6%	1,821	-0.9%
71	<b>Menorca</b> (MAH)	363,800	-10.1%	974,100	-4.0%	3,442	-8.3%	318	-9.9%
72	<b>Fuerteventura</b> (FUE)	358,600	-0.2%	2,167,400	1.2%	3,464	7.3%	231	-9.3%
73	<b>Bordeaux</b> (BOD)	355,600	1.4%	1,743,300	4.2%	5,043	6.6%	967	51.0%
74	<b>Riga</b> (RIX)	346,100	14.4%	1,659,200	17.4%	5,055	20.1%	403	4.9%
75	<b>Nuremberg</b> (NUE)	345,900	-5.0%	2,130,000	5.1%	5,185	-4.8%	838	-23.0%
76	<b>Stavanger</b> (SVG)	338,500	7.1%	1,781,600	10.1%	4,857	2.1%	411	45.4%
77	<b>Trondheim</b> (TRD)	336,200	4.4%	1,751,200	5.4%	4,403	4.6%	175	-18.9%
78	<b>Turin</b> (TRN)	313,300	4.3%	1,829,100	3.9%	4,138	-4.0%	92	-13.2%
79	<b>Malta</b> (MLA)	310,000	8.1%	N/A	N/A	2,718	-1.9%	1,409	-14.3%
80	<b>Aberdeen</b> (ABZ)	302,300	-1.9%	1,618,100	-1.6%	9,047	0.9%	378	11.8%

Airports		Passengers				Commercial movements		Freight (metric tonnes)	
		June 2008	2008v 2007 variation %	January – June	2008v 2007 variation %	June 2008	2008v 2007 variation %	June 2008	2008v 2007 variation %
81	Sofia (SOF)	282,500	20.7%	1,537,800	19.3%	3,754	18.1%	1,549	2.9%
82	Bari (BRI)	236,900	7.1%	1,222,100	10.6%	2,466	-1.5%	119	-23.0%
83	Glasgow Prestwick (PIK)	223,800	1.1%	N/A	N/A	1,854	1.0%	1,936	-36.8%
84	Vilnius (VNO)	214,400	22.8%	994,900	31.4%	3,481	27.7%	330	-9.4%
85	Madeira (FNC)	207,800	8.4%	N/A	N/A	1,926	8.9%	618	2.9%
86	Florence (FLR)	190,000	7.0%	965,000	5.7%	2,794	17.2%	7	17.5%
87	Southampton (SOU)	187,200	1.5%	957,000	4.6%	4,116	-1.1%	23	0.0%
88	Ljubljana (LJU)	181,500	18.5%	734,700	16.1%	3,302	8.2%	801	-27.1%
89	Tallinn (TLL)	175,300	6.3%	900,000	11.7%	3,108	12.8%	3,693	200.1%
90	Malmo (MMX)	167,700	-3.3%	905,800	-3.7%	2,193	-7.4%	2,466	-28.0%
91	Tromsø (TOS)	165,500	5.5%	835,900	5.8%	2,806	0.8%	210	3.1%
92	Dubrovnik (DBV)	163,200	7.2%	458,100	9.6%	1,459	1.9%	76	8.8%
93	Stockholm-Bromma (BMA)	155,000	1.3%	963,500	4.6%	2,931	6.3%	29	0.0%
94	Bodø (BOO)	146,800	-0.1%	747,200	1.0%	3,341	0.7%	141	-7.7%
95	Strasbourg (SXB)	133,300	-22.1%	674,200	-29.7%	3,183	-0.5%	37	-7.5%
96	Brindisi (BDS)	107,500	12.2%	457,400	10.6%	1,084	22.9%	16	63.1%
97	Bournemouth (BOH)	99,700	-3.7%	N/A	N/A	1,020	-8.6%	11	-88.1%
98	Kristiansand (KRS)	91,900	7.9%	441,200	3.6%	1,908	-0.5%	48	-2.5%
99	Aalesund (AES)	76,400	3.1%	394,800	6.3%	984	2.6%	84	4.4%
100	Skopje (SKP)	59,800	3.4%	294,300	8.4%	926	-0.8%	163	7.9%
101	Plovdiv (PDV)	53,000	-50.5%	N/A	N/A	439	-52.8%	205	-89.0%
102	Haugesund (HAU)	51,800	14.8%	261,100	3.9%	732	4.4%	27	-16.2%
103	Humberside (HUY)	51,500	-8.7%	N/A	N/A	1,239	-2.3%	104	-69.6%
104	Liege (LGG)	42,100	21.1%	129,000	10.8%	2,397	2.3%	44,711	15.7%
105	Ohrd (OHD)	5,500	14.6%	N/A	N/A	88	3.5%	1	-2.0%
106	Katowice (KTW)	N/A	N/A	N/A	N/A	N/A	N/A	N/A	N/A
107	Bucharest (OTP)	N/A	N/A	N/A	N/A	N/A	N/A	N/A	N/A

----- Preliminary traffic figures -----

### **Total commercial passengers**

**International passengers** (enplaned + deplaned) + **domestic passengers** (enplaned + deplaned) + **direct transit passengers** (passengers who arrive at and depart from the airport on a flight bearing the same number. They are counted only ONCE).

### **Commercial movements**

Landing or take off of an aircraft operating a scheduled or non scheduled commercial service.

### **Freight**

Freight loaded and unloaded (arriving or departing) at the airport. Freight comprises goods, newspapers, diplomatic bags, parcel post and express parcel.

**The ten largest airports on freight – reporting to  
ACI EUROPE**  
(metric tonnes)

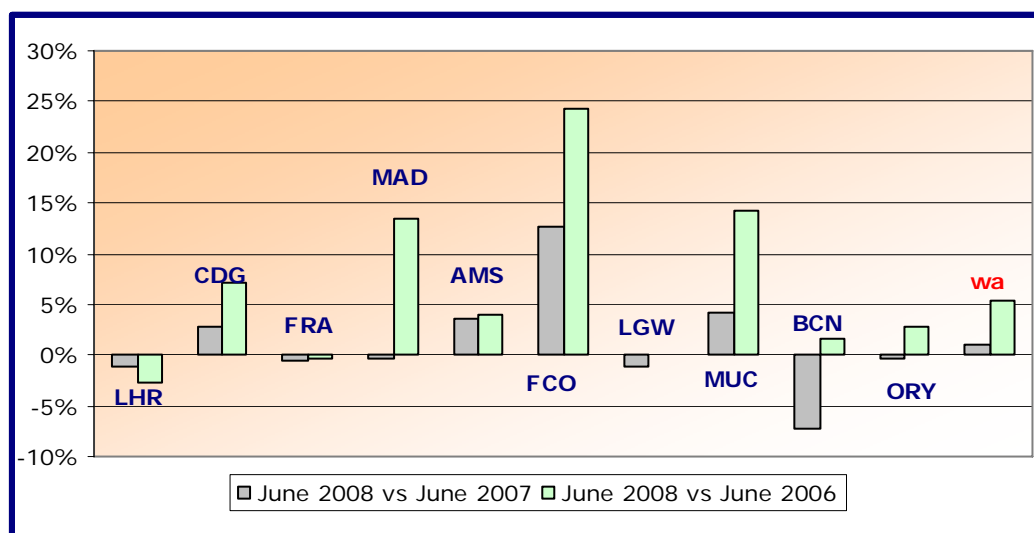
Airports		June 2008	2008v2007 variation %
1	<b>Frankfurt</b> (FRA)	175,502	0.8%
2	<b>Paris Roissy</b> (CDG)	169,570	1.3%
3	<b>Amsterdam</b> (AMS)	131,934	-2.6%
4	<b>London Heathrow</b> (LHR)	120,964	8.1%
5	<b>Brussels</b> (BRU)	48,196	-21.3%
6	<b>Cologne/Bonn</b> (CGN)	48,816	-21.6%
7	<b>Liege</b> (LGG)	44,711	15.7%
8	<b>Milan-Malpensa</b> (MXP)	36,438	-9.1%
9	<b>Madrid</b> (MAD)	29,114	7.8%
10	<b>Zurich</b> (ZRH)	23,963	8.2%

**Group 1**

**Airports welcoming more than 25 million passengers per year  
(percentage traffic variation June 2008 versus 2007 and 2006)**

Airport	2008v2007 variation %	2008v2006 variation %
LHR	-1.1%	-2.7%
CDG	+2.8%	+7.2%
FRA	-0.5%	-0.3%
MAD	-0.3%	+13.5%
AMS	+3.6%	+4.0%
FCO	+12.6%	+24.3%
LGW	-1.2%	+0.1%
MUC	+4.3%	+14.2%
BCN	-7.3%	+1.6%
ORY	-0.3%	+2.8%
<b>wa*</b>	<b>+1.1%</b>	<b>+5.4%</b>

\*weighted average=SUM(%change\*pax)/SUM(pax)

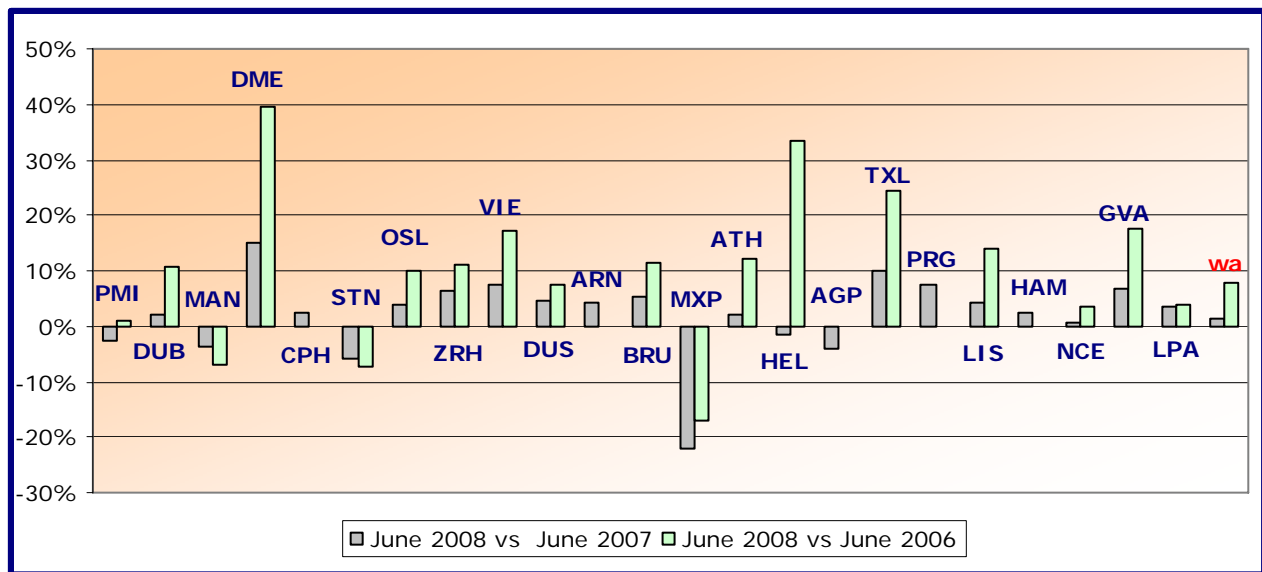


### Group 2

Airports welcoming between 10 and 25 million passengers per year (percentage traffic variation June 2008 versus 2007 and 2006)

Airport	2008v2007 variation %	2008v2006 variation %
PMI	-2.5%	+1.0%
DUB	+2.2%	+10.7%
MAN	-3.6%	-6.9%
DME	+15.2%	+39.5%
CPH	+2.6%	N/A
STN	-5.7%	-7.5%
OSL	+3.9%	+10.2%
ZRH	+6.2%	+11.1%
VIE	+7.4%	+17.1%
DUS	+4.8%	+7.6%
ARN	+4.1%	N/A
BRU	+5.4%	+11.6%
MXP	-22.2%	-17.1%
ATH	+2.0%	+12.1%
HEL	-1.5%	+33.3%
AGP	-4.0%	-0.2%
TXL	+9.9%	+24.5%
PRG	+7.6%	N/A
LIS	+4.4%	+14.1%
HAM	+2.5%	N/A
NCE	+0.5%	+3.7%
GVA	+6.9%	+17.7%
LPA	+3.6%	+3.8%
<b>wa*</b>	<b>+1.4%</b>	<b>+7.7%</b>

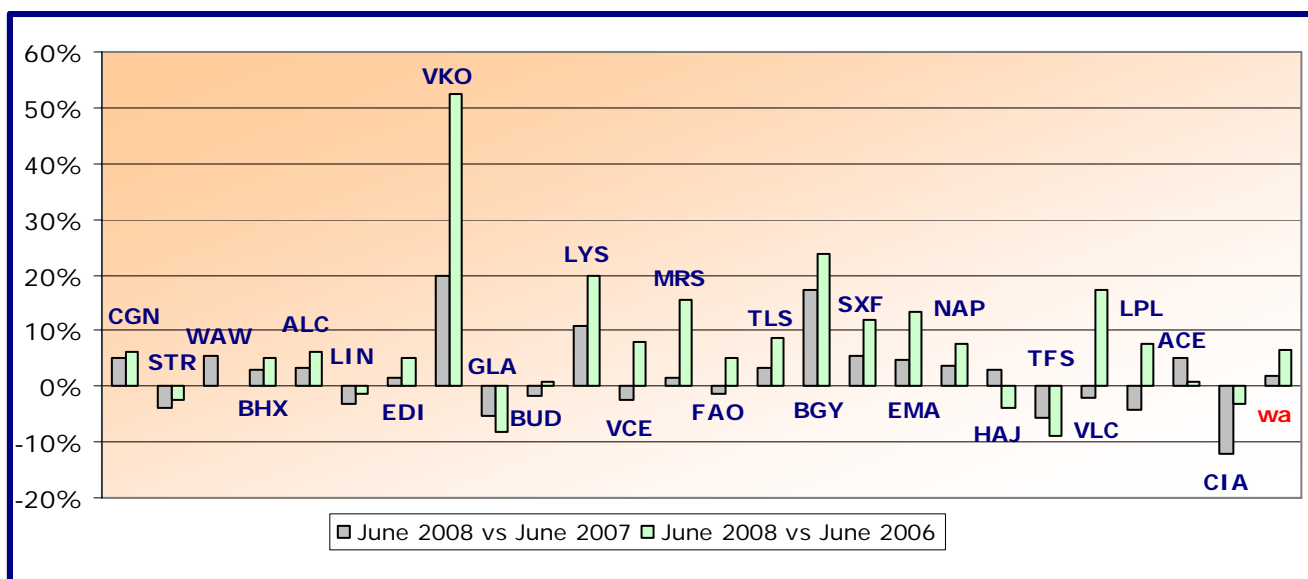
\*weighted average =  $\text{SUM}(\% \text{change} * \text{pax}) / \text{SUM}(\text{pax})$



**Group 3**  
**Airports welcoming between 5 and 10 million passengers**  
**per year (percentage traffic variation June 2008 versus 2007 and 2006)**

Airport	2008v2007 variation %	2008v2006 variation %
CGN	+5.1%	+6.2%
STR	-4.0%	-2.6%
WAW	+5.5%	N/A
BHX	+2.8%	+5.2%
ALC	+3.2%	+6.1%
LIN	-3.3%	-1.4%
EDI	+1.5%	+5.2%
VKO	+19.7%	+52.6%
GLA	-5.3%	-8.0%
BUD	-1.7%	+0.9%
LYS	+11.0%	+19.8%
VCE	-2.5%	+8.0%
MRS	1.7%	+15.6%
FAO	-1.2%	+5.1%
TLS	+3.2%	+8.5%
BGY	+17.4%	+23.6%
SXF	+5.6%	+11.8%
EMA	+4.8%	+13.5%
NAP	+3.8%	+7.6%
HAJ	+3.1%	-3.9%
TFS	-5.5%	-9.0%
VLC	-2.0%	+17.5%
LPL	-4.1%	+7.7%
ACE	+4.9%	+0.7%
CIA	-12.2%	-3.0%
<b>wa*</b>	<b>+1.9%</b>	<b>+6.7%</b>

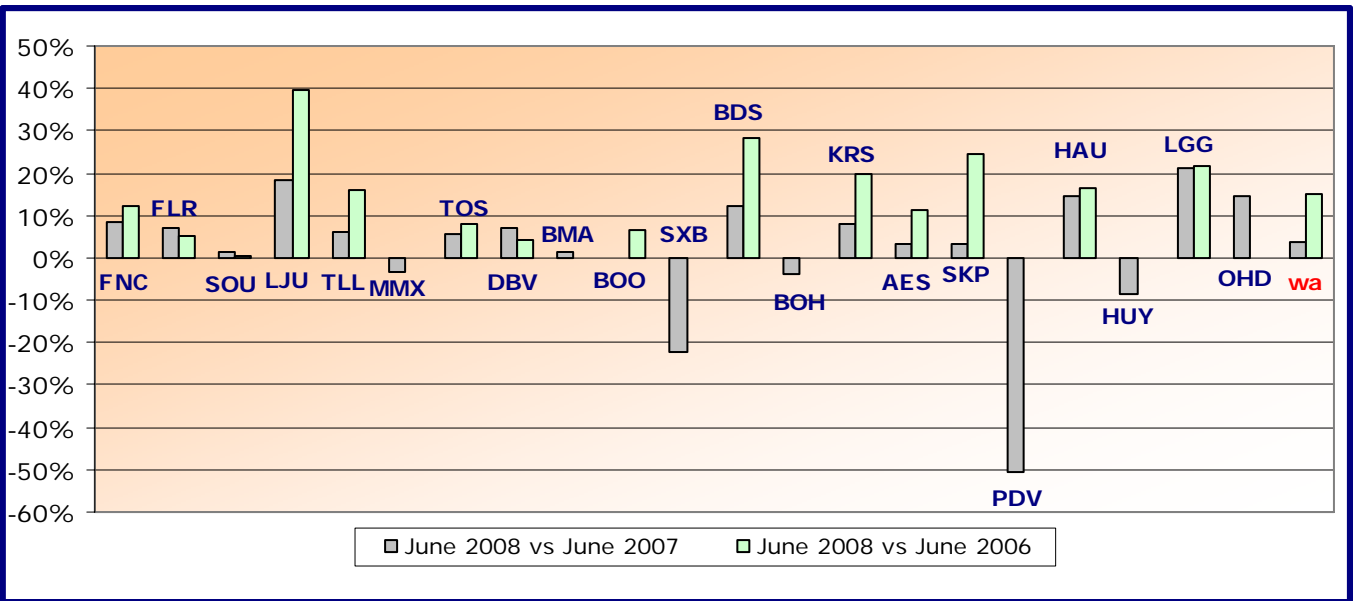
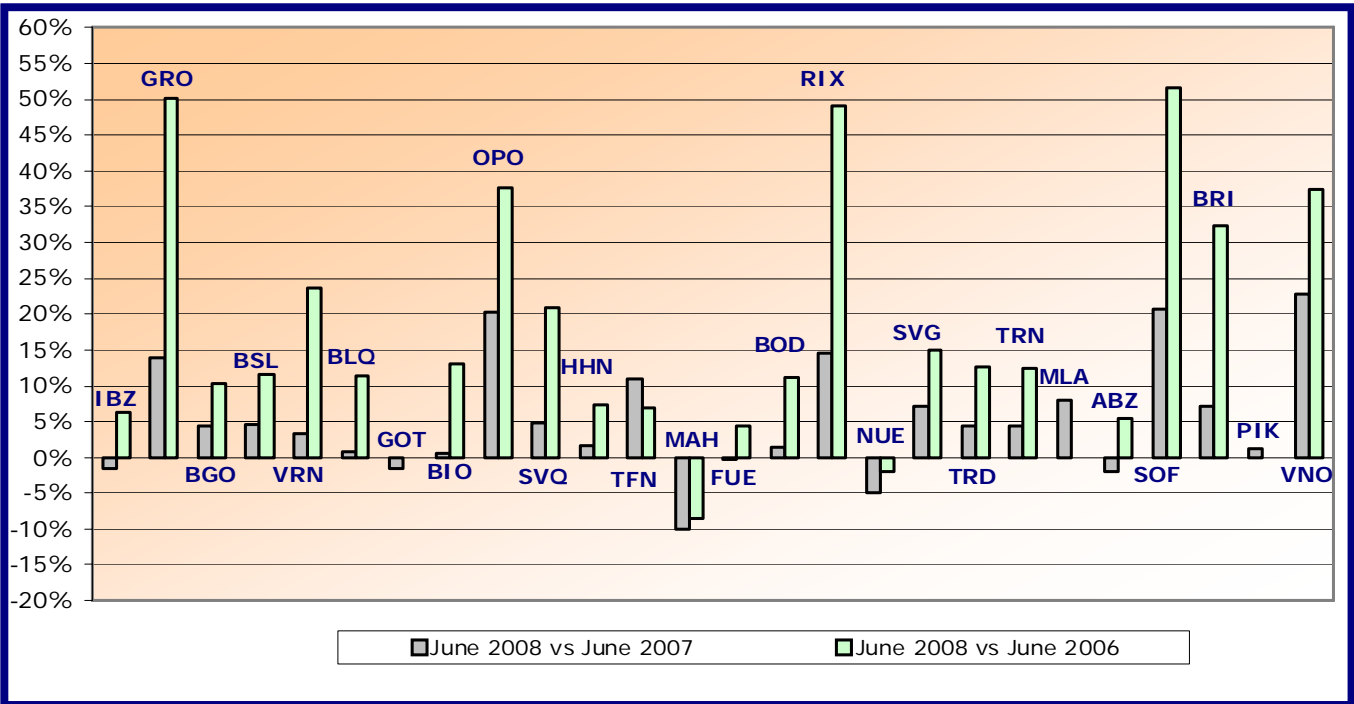
\*weighted average=SUM(%change\*pax)/SUM(pax)



**Group 4**  
**Airports welcoming less than 5 million passengers**  
**per year (percentage traffic variation June 2008 versus 2007 and 2006)**

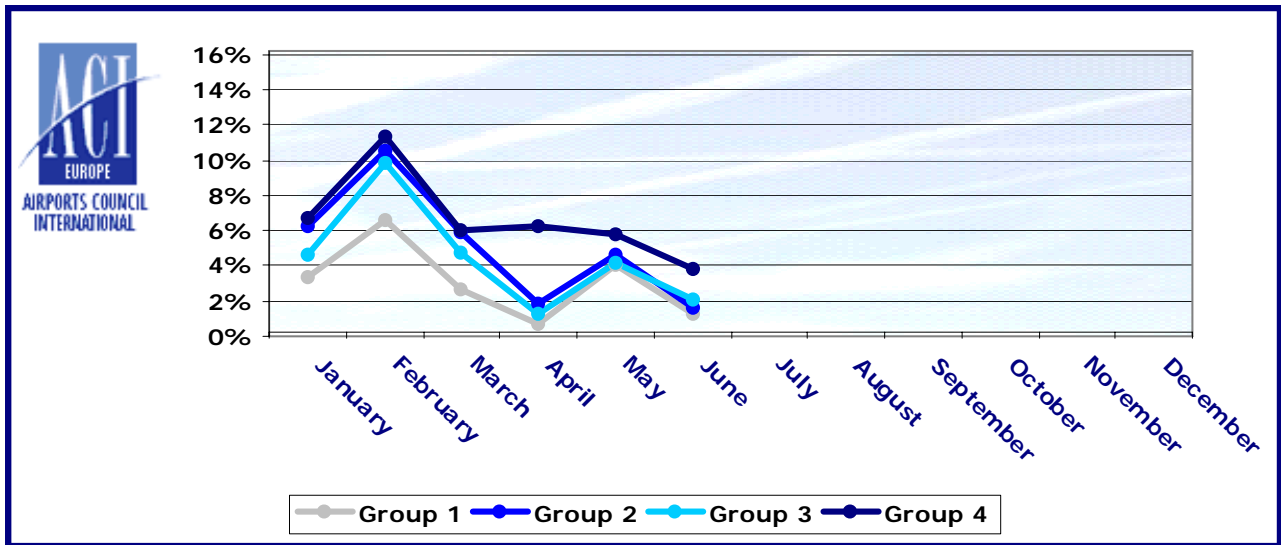
Airport	2008v2007 variation %	2008v2006 variation %
IBZ	-1.6%	+6.3%
GRO	+13.8%	+50.1%
BGO	+4.4%	+10.2%
BSL/ML	+4.7%	+11.6%
VRN	+3.3%	+23.6%
BLQ	+0.7%	+11.4%
GOT	-1.5%	N/A
BIO	+0.6%	+13.1%
OPO	+20.2%	+37.6%
SVQ	+4.8%	+20.8%
HHN	+1.7%	+7.4%
TFN	+10.9%	+6.9%
MAH	-10.1%	-8.5%
FUE	-0.2%	+4.5%
BOD	+1.4%	+11.2%
RIX	+14.4%	+49.0%
NUE	-5.0%	-2.0%
SVG	+7.1%	+15.0%
TRD	+4.4%	+12.7%
TRN	+4.3%	+12.4%
MLA	+8.1%	N/A
ABZ	-1.9%	+5.5%
SOF	+20.7%	+51.6%
BRI	+7.1%	+32.4%
PIK	+1.1%	N/A
VNO	+22.8%	+37.5%
FNC	+8.4%	+12.0%
FLR	+7.0%	+5.2%
SOU	+1.5%	+0.3%
LJU	+18.5%	+39.7%
TLL	+6.3%	+16.0%
MMX	-3.3%	N/A
TOS	+5.5%	+8.2%
DBV	+7.2%	+4.0%
BMA	+1.3%	N/A
BOO	-0.1%	6.4%
SXB	-22.1%	N/A
BDS	+12.2%	28.1%
BOH	-3.7%	N/A
KRS	+7.9%	19.6%
AES	+3.1%	11.5%
SKP	+3.4%	24.5%
PDV	-50.5%	N/A
HAU	+14.8%	16.6%
HUY	-8.7%	N/A
LGG	+21.1%	21.7%
OHD	+14.6%	N/A
<b>wa*</b>	<b>+5.6%</b>	<b>+12.8%</b>

\*weighted average=SUM(%change\*pax)/SUM(pax)



## Year-to-date airport passenger trends

The graphic illustrates and compares the trends of the different airport Groups 1, 2, 3 and 4 for 2008.



The graphic compares the amount of total commercial passengers 2008 with 2007. The airports included, in this graphic, are: LHR, FRA, CDG, AMS, MAD, LGW, FCO, MUC, BCN, ORY, STN, MAN, MXP, ZRH, CPH, ARN, DUB, OS L, BRU, VIE, DUS, ATH, PMI, AGP, DME, HEL, TXL, LIS, HAM, PRG.

