



Airport Traffic Report

November 2007

European passenger traffic up 8.2% during November 2007

The 'ACI EUROPE Airport Traffic Report - November 2007' includes **106 airports** in total.

The overall **passenger** traffic at European airports increased by **+8.2%** in **November 2007** compared with November 2006. The overall **freight** traffic among European airports increased **+3.5%** in November 2007 when compared with the corresponding month in 2006. The overall figure for **movements** at European airports increased **+3.7%** in November 2007 when compared with November 2006.

Passenger figures for November 2007 indicate that Group 4 airports (airports welcoming less than 5 million passengers per year) had the largest increase in traffic - with an average increase of **+9.4%** when compared with November 2006 - and an average increase of **+19.5%** when compared with November 2005.

Airports welcoming more than 25 million passengers per year (Group 1), airports welcoming between 10 and 25 million passengers (Group 2) and airports welcoming between 5 and 10 million passengers (Group 3) reported an average increase of **+7.0%**, **+9.2%** and **+8.3%** respectively when compared with November 2006. The same comparison of November 2007 with November 2005 demonstrates an average increase of **+12.1%**, **+16.1%** and **+9.2%** respectively.

Examples of airports that experienced the highest increase in passenger traffic per group, when comparing November 2007 with November 2006, include:

- **Group 1 airports** – Madrid (**+14.1%**), Rome Fiumicino (**+11.8%**) and Munich (**9.9%**);
- **Group 2 airports** – Berlin (**+25.1%**), Moscow- Domodedovo (**+23.8%**) and Vienna (**+21.8%**);
- **Group 3 airports** – Moscow-Vnukovo (**+46.3%**), Warsaw (**+27.2%**) and Venice (**+18.0%**);
- **Group 4 airports** – Girona (**+56.1%**), Vilnius (**+46.1%**) and Liege (**+39.7%**).

Airports		Passengers				Commercial movements		Freight (metric tonnes)	
		November 2007	2007v 2006 variation %	January – November	2007v 2006 variation %	November 2007	2007v 2006 variation %	November 2007	2007v 2006 variation %
1	London Heathrow (LHR)	5,234,200	2.4%	62,676,400	0.6%	38,983	1.1%	116,456	6.4%
2	Paris Roissy (CDG)	4,528,600	6.5%	55,274,000	5.4%	43,976	1.6%	N/A	N/A
3	Madrid (MAD)	4,222,500	14.1%	48,093,100	14.4%	40,785	6.5%	29,284	-2.4%
4	Frankfurt (FRA)	4,209,500	5.2%	50,195,700	2.5%	38,980	1.0%	190,401	2.7%
5	Amsterdam (AMS)	3,478,300	3.6%	44,434,400	3.8%	33,886	-1.3%	150,699	10.1%
6	Munich (MUC)	2,714,300	9.9%	31,499,800	10.6%	34,088	4.7%	22,906	13.8%
7	Rome-Fiumicino (FCO)	2,466,800	11.8%	30,493,000	9.3%	26,546	5.5%	10,908	10.5%
8	Barcelona (BCN)	2,442,500	7.6%	30,584,200	9.9%	27,582	1.0%	8,573	-6.2%
9	London Gatwick (LGW)	2,291,700	6.1%	32,788,600	3.1%	18,444	3.2%	14,528	-10.1%
10	Paris Orly (ORY)	2,004,700	2.8%	24,373,700	3.5%	18,656	-1.3%	N/A	N/A
11	Milan-Malpensa (MXP)	1,745,700	12.5%	22,080,300	9.5%	20,813	4.7%	42,427	8.8%
12	Dublin (DUB)	1,709,300	11.8%	21,617,100	9.9%	15,613	11.3%	N/A	N/A
13	Copenhagen (CPH)	1,659,200	2.7%	19,889,600	2.6%	21,218	-0.2%	N/A	N/A
14	Zurich (ZRH)	1,586,700	11.2%	19,084,000	7.8%	18,302	5.9%	23,246	6.5%
15	Oslo (OSL)	1,579,200	11.6%	17,753,300	7.7%	18,931	5.3%	6,086	-3.1%
16	London Stansted (STN)	1,552,500	-6.4%	22,164,100	1.1%	13,597	-7.1%	18,401	-4.2%
17	Vienna (VIE)	1,536,800	21.8%	17,305,500	10.9%	21,768	15.1%	17,593	3.4%
18	Stockholm-Arlanda (ARN)	1,523,800	4.3%	16,657,500	1.6%	18,530	0.3%	7,962	-4.4%
19	Moscow-Domodedovo (DME)	1,418,500	23.8%	17,353,300	22.1%	15,144	20.5%	11,926	23.1%
20	Manchester (MAN)	1,415,700	-0.5%	20,946,700	-1.8%	14,959	-3.5%	16,386	13.5%
21	Brussels (BRU)	1,366,000	14.0%	16,579,200	6.3%	20,354	9.3%	71,826	8.5%
22	Düsseldorf (DUS)	1,336,000	7.9%	16,657,400	7.5%	17,536	3.1%	4,586	-16.0%
23	Berlin (TXL)	1,191,000	25.1%	12,287,600	12.3%	13,072	12.5%	1,602	1.8%
24	Athens (ATH)	1,092,600	11.0%	15,382,200	9.8%	13,646	4.8%	9,248	-0.8%
25	Hamburg (HAM)	1,036,100	12.7%	11,867,300	6.7%	12,784	5.1%	7,659	12.4%
26	Helsinki (HEL)	1,030,500	5.3%	11,978,500	6.7%	15,681	2.2%	10,987	-5.3%

Airports		Passengers				Commercial movements		Freight (metric tonnes)	
		November 2007	2007v 2006 variation %	January – November	2007v 2006 variation %	November 2007	2007v 2006 variation %	November 2007	2007v 2006 variation %
27	Palma de Mallorca (PMI)	985,700	7.7%	22,367,800	3.7%	10,492	3.8%	1,659	-16.0%
28	Lisbon (LIS)	958,400	11.4%	N/A	N/A	10,909	2.2%	6,403	-10.1%
29	Prague (PRG)	941,600	14.3%	11,578,800	7.7%	13,786	9.2%	4,756	3.1%
30	Gran Canaria (LPA)	930,600	3.2%	9,379,500	0.3%	9,572	3.5%	3,383	-9.8%
31	Malaga (AGP)	828,100	4.7%	12,811,700	4.0%	8,149	-0.1%	417	-12.7%
32	Tenerife Sur (TFS)	779,000	5.5%	7,845,800	-2.4%	5,441	4.4%	797	3.1%
33	Cologne/Bonn (CGN)	760,500	5.6%	9,777,400	6.0%	10,215	-7.4%	51,061	-17.9%
34	Milan Linate (LIN)	756,000	2.9%	9,209,800	2.8%	8,378	-1.6%	1,599	-8.9%
35	Stuttgart (STR)	749,500	1.0%	9,648,500	2.3%	10,669	0.4%	1,713	-7.9%
36	Geneva (GVA)	702,700	10.3%	9,910,800	9.7%	9,752	6.9%	2,611	0.5%
37	Edinburgh (EDI)	694,300	4.5%	8,423,400	5.1%	9,405	-1.7%	2,063	9.6%
38	Warsaw (WAW)	687,800	27.2%	8,619,900	14.5%	10,680	15.4%	5,026	15.0%
39	Nice (NCE)	675,000	10.0%	9,755,900	4.5%	8,851	4.8%	773	-7.5%
40	Glasgow (GLA)	612,300	-3.3%	8,284,400	-0.3%	6,972	-8.5%	341	-38.7%
41	Birmingham (BHX)	610,800	2.3%	8,644,100	0.8%	7,978	-4.3%	1,308	17.2%
42	Alicante (ALC)	610,800	5.5%	7,931,200	1.7%	5,467	4.7%	360	-7.1%
43	Budapest (BUD)	608,300	13.5%	8,020,700	3.8%	8,756	-0.6%	5,157	-12.8%
44	Lyon (LYS)	566,300	14.2%	N/A	N/A	10,198	1.3%	3,543	-13.4%
45	Moscow-Vnukovo (VKO)	520,000	46.3%	N/A	N/A	10,400	38.0%	1,923	21.4%
46	Marseille (MRS)	511,900	10.5%	6,456,800	14.8%	7,441	3.5%	3,787	9.8%
47	Venice (VCE)	494,100	18.0%	6,615,800	12.0%	5,737	-0.8%	1,778	-6.6%
48	Toulouse (TLS)	480,700	3.9%	5,684,300	3.7%	6,484	-0.8%	4,643	-5.2%
49	Lanzarote (ACE)	462,300	3.1%	5,181,600	-0.2%	4,146	2.2%	508	1.0%
50	Valencia (VLC)	458,000	23.1%	N/A	N/A	6,577	5.3%	1,169	0.3%
51	Milan/Orio al Serio (BGY)	415,700	9.1%	5,286,400	9.4%	4,762	14.9%	12,366	-3.0%
52	Hanover (HAJ)	412,000	10.9%	5,316,200	-1.2%	5,586	5.1%	478	-7.2%
53	Bergen (BGO)	397,500	8.4%	4,299,900	6.2%	6,347	1.5%	369	30.3%

Airports		Passengers				Commercial movements		Freight (metric tonnes)	
		November 2007	2007v 2006 variation %	January – November	2007v 2006 variation %	November 2007	2007v 2006 variation %	November 2007	2007v 2006 variation %
54	Liverpool (LPL)	388,500	6.7%	5,130,100	11.6%	3,289	-11.3%	355	17.9%
55	Naples (NAP)	384,600	16.9%	5,394,500	13.4%	4,462	2.0%	198	29.8%
56	Goteborg (GOT)	377,100	3.8%	4,074,100	1.5%	5,476	-1.4%	4,657	-15.6%
57	Rome-Ciampino (CIA)	376,500	-4.1%	4,985,900	10.6%	2,908	-13.3%	1,892	-8.7%
58	Nuremberg (NUE)	373,800	8.0%	3,913,600	6.8%	5,173	-4.3%	1,171	14.1%
59	Nottingham East Midlands (EMA)	373,700	15.4%	5,043,900	14.4%	5,268	11.1%	24,384	-4.5%
60	Girona (GRO)	370,400	56.1%	4,468,400	32.7%	3,116	79.1%	27	3809.4%
61	Bucharest (OTP)	360,200	25.6%	N/A	N/A	5,468	18.7%	1,435	-6.9%
62	Fuerteventura (FUE)	357,100	1.2%	4,243,200	4.1%	3,353	1.3%	278	9.1%
63	Sevilla (SVQ)	333,900	11.7%	4,152,400	16.8%	4,300	17.0%	556	-49.0%
64	Bilbao (BIO)	333,000	15.6%	3,949,800	10.2%	4,325	4.9%	250	-16.6%
65	Tenerife Norte (TFN)	329,200	2.7%	3,785,700	2.7%	4,869	2.1%	2,110	-9.7%
66	Stavanger (SVG)	309,100	11.2%	3,102,100	7.5%	5,017	13.7%	234	-29.2%
67	Trondheim (TRD)	308,500	10.3%	3,165,300	7.7%	4,288	3.2%	212	10.6%
68	Bologna (BLQ)	285,100	9.4%	N/A	N/A	4,614	5.2%	1,703	18.1%
69	Basel-Mulhouse (BSL/ML)	283,100	-4.5%	3,982,600	7.2%	4,437	-2.1%	3,689	-13.2%
70	Porto (OPO)	281,700	26.2%	3,665,900	17.1%	4,223	10.1%	2,688	-18.5%
71	Aberdeen (ABZ)	272,100	-2.3%	3,189,000	8.7%	8,805	-2.9%	330	-2.1%
72	Turin (TRN)	256,500	11.3%	3,228,800	8.0%	3,940	1.1%	91	-12.7%
73	Riga (RIX)	252,800	27.4%	2,917,400	27.1%	3,758	14.6%	481	-47.8%
74	Hahn (HHN)	247,400	-10.4%	3,755,200	10.5%	2,914	-2.6%	12,686	22.0%
75	Faro (FAO)	224,900	-0.4%	5,307,900	7.9%	1,825	-10.9%	33	-7.7%
76	Charleroi (CRL)	206,000	12.7%	2,255,000	12.9%	1,421	18.1%	4	2330.6%
77	Sofia (SOF)	196,900	26.3%	2,464,700	23.6%	2,939	14.2%	1,272	-6.3%
78	Stockholm-Bromma (BMA)	183,000	6.0%	1,697,500	11.0%	3,360	-4.7%	30	328.6
79	Madeira (FNC)	173,600	11.1%	2,242,000	1.8%	1,735	-0.3%	541	-4.4%

Airports		Passengers				Commercial movements		Freight (metric tonnes)	
		November 2007	2007v 2006 variation %	January - November	2007v 2006 variation %	November 2007	2007v 2006 variation %	November 2007	2007v 2006 variation %
80	Bari (BRI)	173,300	22.8%	2,213,200	20.7%	2,245	27.0%	109	207.3%
81	Glasgow Prestwick (PIK)	163,500	1.2%	N/A	N/A	1,524	1.1%	3,002	4.5%
82	Malmö (MMX)	149,600	-7.2%	1,788,000	-0.5%	2,185	-11.7%	3,809	-10.8%
83	Southampton (SOU)	149,200	2.0%	1,833,700	2.8%	3,617	-1.4%	37	27.6%
84	Tallinn (TLL)	141,700	15.8%	1,579,600	11.0%	2,931	27.4%	3,693	122.3%
85	Vilnius (VNO)	141,400	46.1%	N/A	N/A	2,740	37.8%	373	-8.4%
86	Florence (FLR)	133,200	3.2%	N/A	N/A	2,064	-3.7%	8	-47.1%
87	Tromsø (TOS)	130,800	3.3%	1,493,200	3.0%	2,713	1.9%	195	-0.8%
88	Bodø (BOO)	128,000	7.4%	1,281,400	5.9%	3,177	-0.1%	157	9.9%
89	Strasbourg (SXB)	121,300	-27.6%	1,615,400	-13.3%	2,911	-12.6%	74	6.8%
90	Ibiza (IBZ)	107,500	0.1%	4,645,700	6.9%	1,740	-7.0%	270	1.3%
91	Menorca (MAH)	80,100	2.8%	2,700,400	3.4%	1,377	-6.2%	234	-8.9%
92	Kristiansand (KRS)	77,300	3.6%	815,900	7.0%	1,751	3.9%	43	-4.8%
93	Brindisi (BDS)	67,300	24.9%	866,400	13.4%	902	39.2%	57	278.4%
94	Aalesund (AES)	65,800	6.6%	714,100	5.1%	1,010	16.1%	96	15.1%
95	Olbia (OLB)	64,200	7.0%	N/A	N/A	843	24.0%	57	-24.4%
96	Bournemouth (BOH)	54,300	-9.3%	N/A	N/A	N/A	N/A	992	9.1%
97	Haugesund (HAU)	46,700	0.4%	478,200	5.7%	782	-6.0%	27	-2.7%
98	Skopje (SKP)	42,900	15.5%	N/A	N/A	787	6.6%	257	68.4%
99	Dubrovnik (DBV)	29,400	3.4%	N/A	N/A	331	9.2%	60	-1.8%
100	Humberside (HUY)	25,200	-0.4%	N/A	N/A	1,139	-1.5%	392	17.4%
101	Liege (LGG)	10,000	39.7%	322,500	8.5%	2,349	5.1%	48,318	20.1%
102	Ohrid (OHD)	1,400	-9.1%	43,000	-7.2%	22	-35.3%	1	-57.8%
103	Malta (MLA)	N/A	N/A	N/A	N/A	N/A	N/A	N/A	N/A
104	Bordeaux (BOD)	N/A	N/A	N/A	N/A	N/A	N/A	N/A	N/A
105	Katowice (KTW)	N/A	N/A	N/A	N/A	N/A	N/A	N/A	N/A
106	Ljubljana (LJU)	N/A	N/A	N/A	N/A	N/A	N/A	N/A	N/A

----- Preliminary traffic figures -----

Total commercial passengers

International passengers (enplaned + deplaned) + **domestic passengers** (enplaned + deplaned) + **direct transit passengers** (passengers who arrive at and depart from the airport on a flight bearing the same number. They are counted only ONCE).

Commercial movements

Landing or take off of an aircraft operating a scheduled or non scheduled commercial service.

Freight

Freight loaded and unloaded (arriving or departing) at the airport. Freight comprises goods, newspapers, diplomatic bags, parcel post and express parcel.

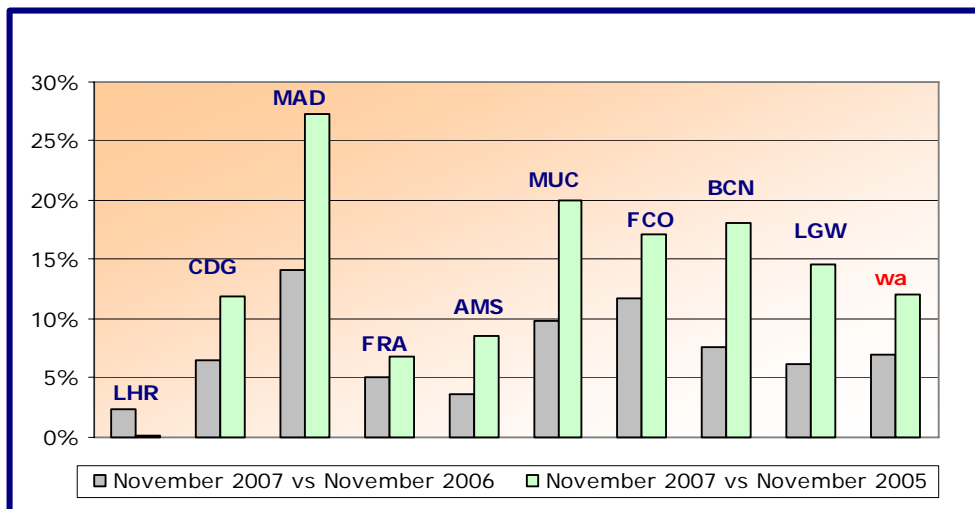
**The ten largest airports on freight – reporting to
ACI EUROPE**
(metric tonnes)

Airports		November 2007	2007v2006 variation %
1	Frankfurt (FRA)	190,401	2.7%
2	Amsterdam (AMS)	150,699	10.1%
3	London Heathrow (LHR)	116,456	6.4%
4	Brussels (BRU)	71,826	8.5%
5	Cologne/Bonn (CGN)	51,061	-17.9%
6	Liege (LGG)	48,318	20.1%
7	Milan-Malpensa (MXP)	42,427	8.8%
8	Madrid (MAD)	29,284	-2.4%
9	Nottingham East Midlands (EMA)	24,384	-4.5%
10	Zurich (ZRH)	23,246	6.5%

Group 1
Airports welcoming more than 25 million passengers per year
(percentage traffic variation November 2007 versus 2006 and 2005)

Airport	2007v2006 variation %	2007v2005 variation %
LHR	+2.4%	+0.2%
CDG	+6.5%	+11.9%
MAD	+14.1%	+27.4%
FRA	+5.2%	+6.9%
AMS	+3.6%	+8.6%
MUC	+9.9%	+20.0%
FCO	+11.8%	+17.1%
BCN	+7.6%	+18.1%
LGW	+6.1%	+14.6%
wa*	+7.0%	+12.1%

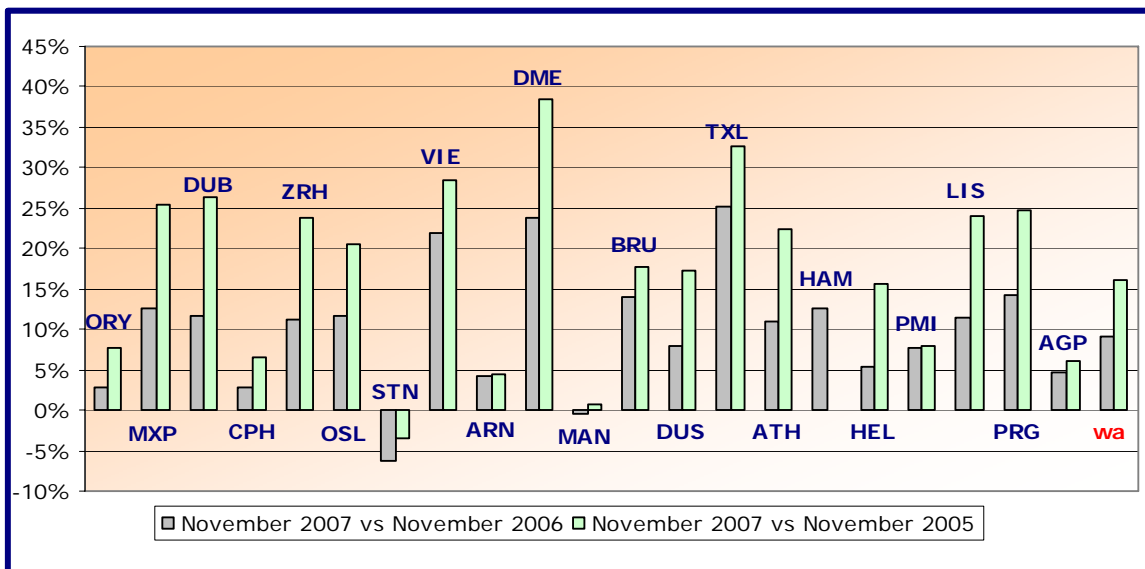
*weighted average = $\text{SUM}(\% \text{change} * \text{pax}) / \text{SUM}(\text{pax})$



Group 2
Airports welcoming between 10 and 25 million passengers
per year (percentage traffic variation November 2007 versus 2006 and
2005)

Airport	2007v2006 variation %	2007v2005 variation %
ORY	+2.8%	+7.7%
MXP	+12.5%	+25.4%
DUB	+11.8%	+26.3%
CPH	+2.7%	+6.6%
ZRH	+11.2%	+23.9%
OSL	+11.6%	+20.4%
STN	-6.4%	-3.5%
VIE	+21.8%	+28.5%
ARN	+4.3%	+4.4%
DME	+23.8%	+38.4%
MAN	-0.5%	+0.8%
BRU	+14.0%	+17.7%
DUS	+7.9%	+17.2%
TXL	+25.1%	+32.6%
ATH	+11.0%	+22.3%
HAM	+12.7%	N/A
HEL	+5.3%	+15.6%
PMI	+7.7%	+8.0%
LIS	+11.4%	+24.0%
PRG	+14.3%	+24.7%
AGP	+4.7%	+6.1%
wa*	+9.2%	+16.1%

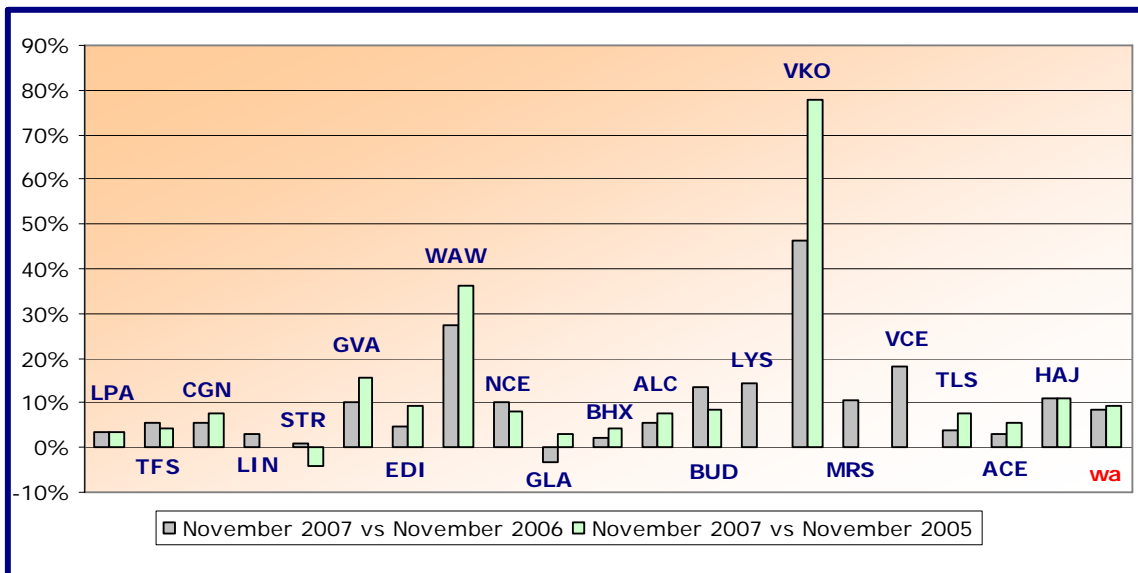
*weighted average=SUM(%change*pax)/SUM(pax)



Group 3
Airports welcoming between 5 and 10 million passengers
per year (percentage traffic variation November 2007 versus 2006 and 2005)

Airport	2007v2006 variation %	2007v2005 variation %
LPA	+3.2%	+3.6%
TFS	+5.5%	+4.2%
CGN	+5.6%	+7.6%
LIN	+2.9%	+0.3%
STR	+1.0%	-4.2%
GVA	+10.3%	+15.8%
EDI	+4.5%	+9.4%
WAW	+27.2%	+36.2%
NCE	+10.0%	+8.1%
GLA	-3.3%	+3.0%
BHX	+2.3%	+4.3%
ALC	+5.5%	+7.4%
BUD	+13.5%	+8.7%
LYS	+14.2%	N/A
VKO	+46.3%	+77.7%
MRS	+10.5%	N/A
VCE	+18.0%	N/A
TLS	+3.9%	+7.6%
ACE	+3.1%	+5.6%
HAJ	+10.9%	+10.9%
wa*	+8.3%	+9.2%

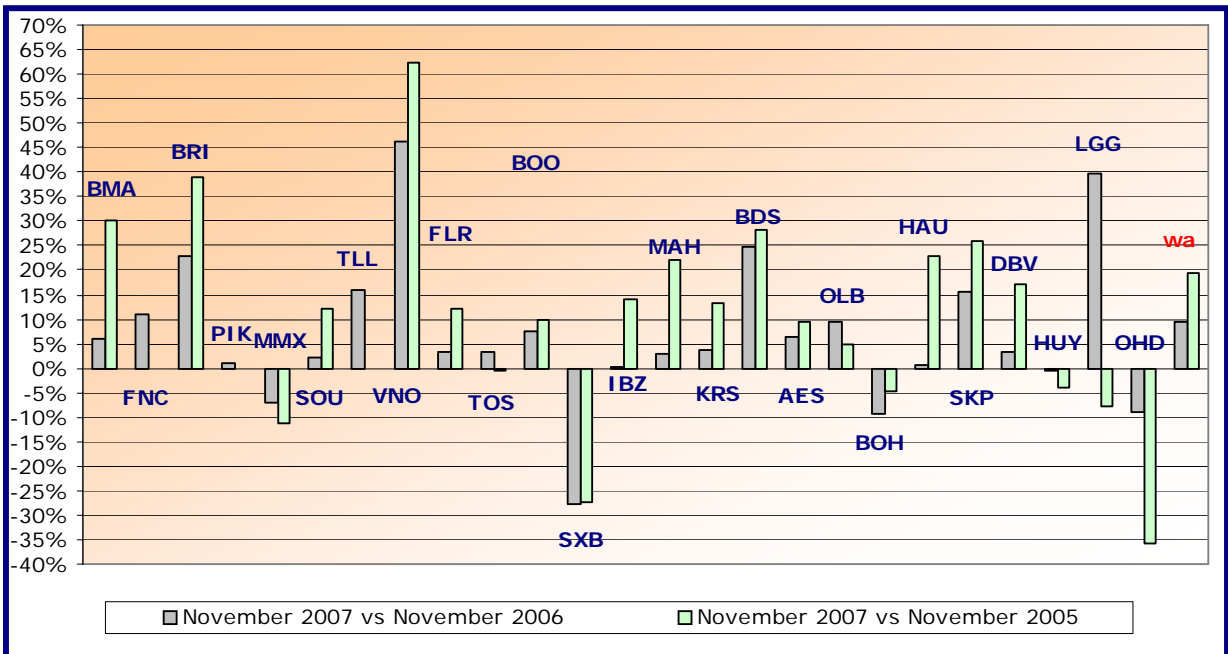
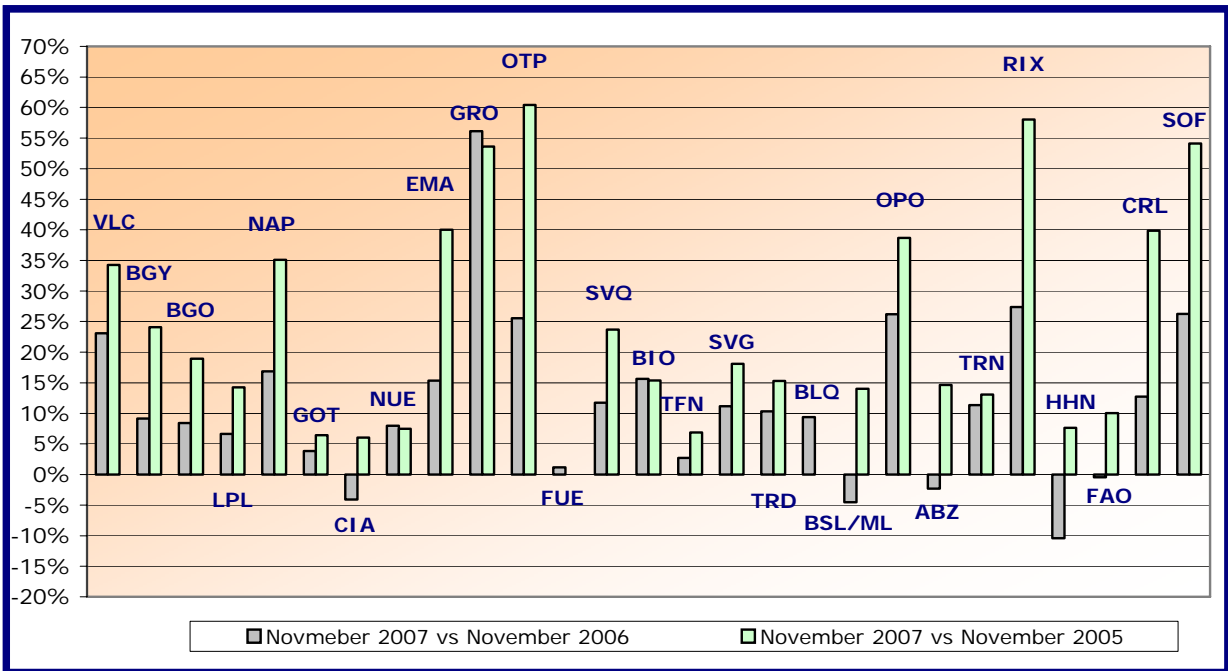
*weighted average=SUM(%change*pax)/SUM(pax)



Group 4
Airports welcoming less than 5 million passengers
per year (percentage traffic variation November 2007 versus 2006 and 2005)

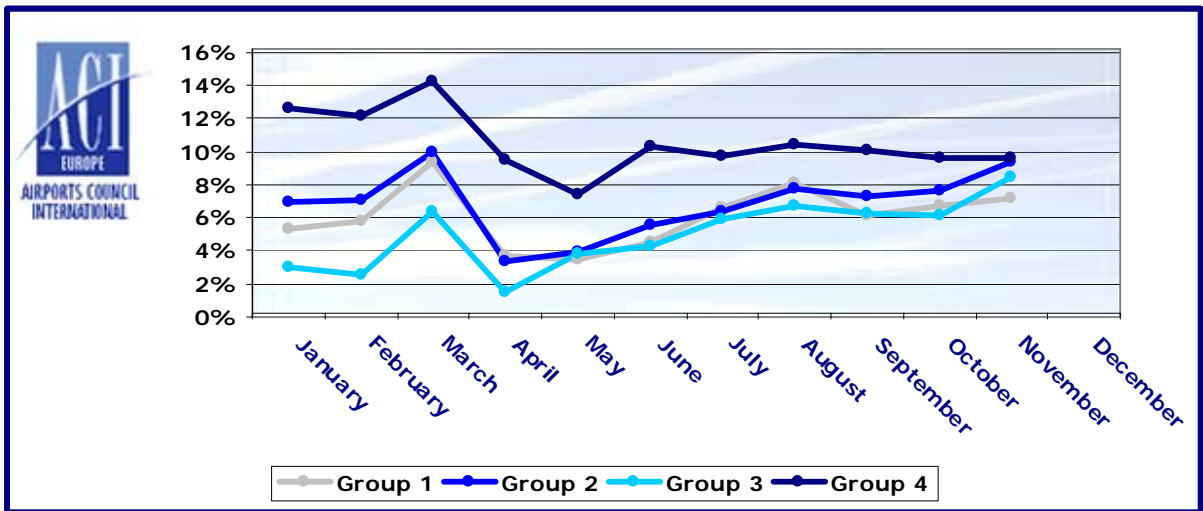
Airport	2007v2006 variation %	2007v2005 variation %
VLC	+23.1%	+34.3%
BGY	+9.1%	+24.1%
BGO	+8.4%	+18.9%
LPL	+6.7%	+14.2%
NAP	+16.9%	+35.1%
GOT	+3.8%	+6.4%
CIA	-4.1%	+6.0%
NUE	+8.0%	+7.5%
EMA	+15.4%	+40.0%
GRO	+56.1%	+53.6%
OTP	+25.6%	+60.4%
FUE	+1.2%	N/A
SVQ	+11.7%	+23.7%
BIO	+15.6%	+15.4%
TFN	+2.7%	+6.9%
SVG	+11.2%	+18.1%
TRD	+10.3%	+15.3%
BLQ	+9.4%	N/A
BSL/ML	-4.5%	+14.0%
OPO	+26.2%	+38.7%
ABZ	-2.3%	+14.6%
TRN	+11.3%	+13.1%
RIX	+27.4%	+58.1%
HHN	-10.4%	+7.6%
FAO	-0.4%	+10.1%
CRL	+12.7%	+39.9%
SOF	+26.3%	+54.1%
BMA	+6.0%	+30.2%
FNC	+11.1%	N/A
BRI	+22.8%	+38.9%
PIK	+1.2%	N/A
MMX	-7.2%	-11.1%
SOU	+2.0%	+12.1%
TLL	+15.8%	N/A
VNO	+46.1%	+62.2%
FLR	+3.2%	+12.0%
TOS	+3.3%	-0.4%
BOO	+7.4%	+9.8%
SXB	-27.6%	-27.5%
IBZ	+0.1%	+14.0%
MAH	+2.8%	+22.1%
KRS	+3.6%	+13.4%
BDS	+24.9%	+28.3%
AES	+6.6%	+9.6%
OLB	+9.4%	+4.8%
BOH	-9.3%	-4.8%
HAU	+0.4%	+22.7%
SKP	+15.5%	+25.9%
DBV	+3.4%	+17.1%
HUY	-0.4%	-4.1%
LGG	+39.7%	-8.0%
OHD	-9.1%	-35.9%
wa*	+9.4%	+19.5%

*weighted average = SUM(%change * pax) / SUM(pax)



Year-to-date airport passenger trends

The graphic illustrates and compares the trends of the different airport Groups 1, 2, 3 and 4 for 2007.



The graphic compares the amount of total commercial passengers 2007 with 2006, 2005, 2004, 2003, 2002 and 2001. The airports included, in this graphic, are: LHR, FRA, CDG, AMS, MAD, LGW, FCO, MUC, BCN, ORY, STN, MAN, MXP, ZRH, CPH, ARN, DUB, OSL, BRU, VIE, DUS, ATH, PMI, AGP, DME, HEL, TXL, LIS, HAM, PRG.

